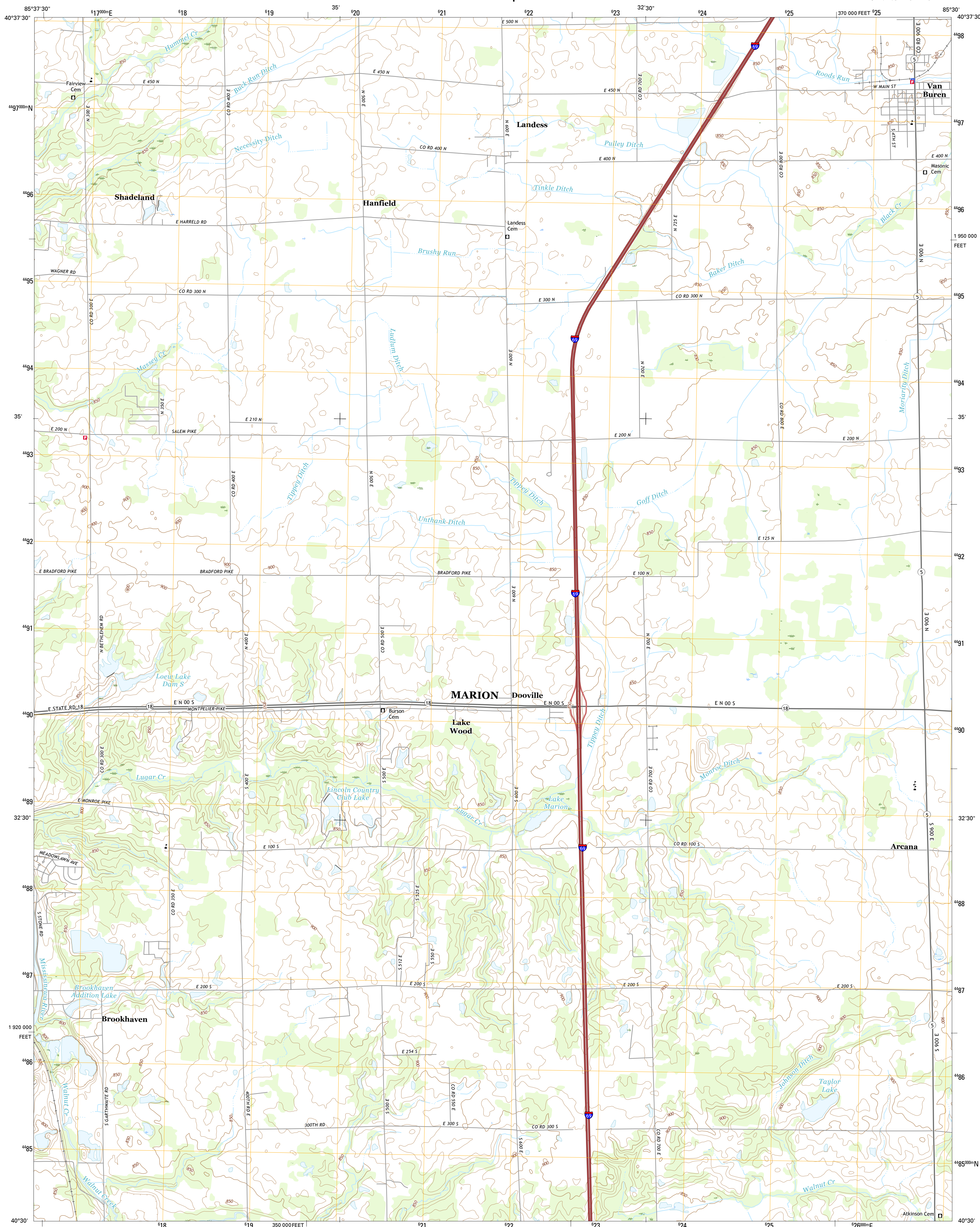




U.S. DEPARTMENT OF THE INTERIOR
U.S. GEOLOGICAL SURVEY



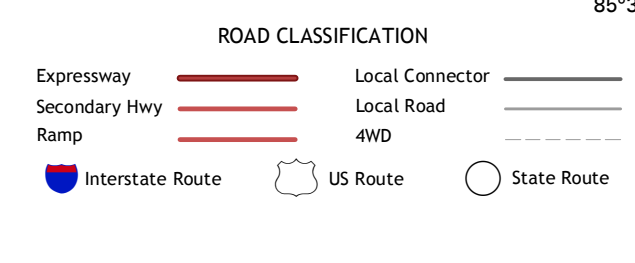
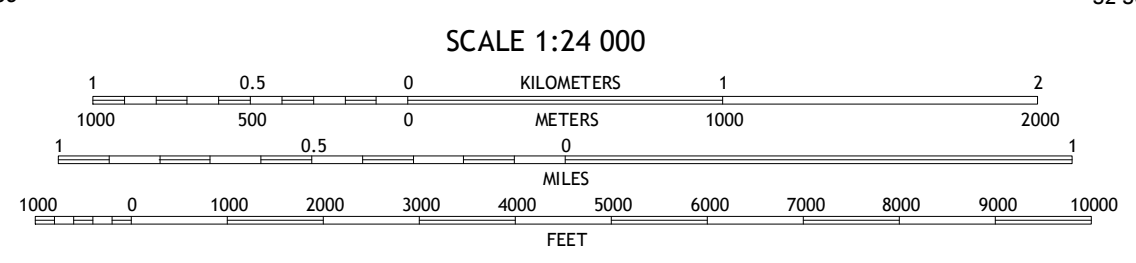
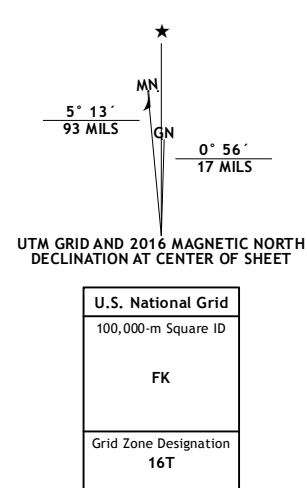
VAN BUREN QUADRANGLE
INDIANA-GRANT CO.
7.5-MINUTE SERIES



Produced by the United States Geological Survey
 North American Datum of 1983 (NAD83)
 World Geodetic System of 1984 (WGS84) Projection and
 1 000-meter grid; Universal Transverse Mercator, Zone 16T
 10 000-foot ticks: Indiana Coordinate System of 1983 (east zone)

This map is not a legal document. Boundaries may be
 generalized for this map scale. Private lands within government
 reservations may not be shown. Obtain permission before
 entering private lands.

Imagery.....NAIP, December 2014
 Roads.....U.S. Census Bureau, 2015 - 2016
 Names.....GNIS, 2016
 Hydrography.....National Hydrography Dataset, 2014
 Contours.....National Elevation Dataset, 2016
 Boundaries.....Multiple sources; see metadata file 1972 - 2016
 Public Land Survey System.....BLM, 2015
 Wetlands.....FWS National Wetlands Inventory 1977 - 2014



1	2	3
4	5	6
7	8	

ADJOINING QUADRANGLES

1 La Fontaine
 2 Mount Etna
 3 Warren
 4 Marion
 5 Roll
 6 Fairmount
 7 Gas City
 8 Hartford City West

VAN BUREN, IN
2016

