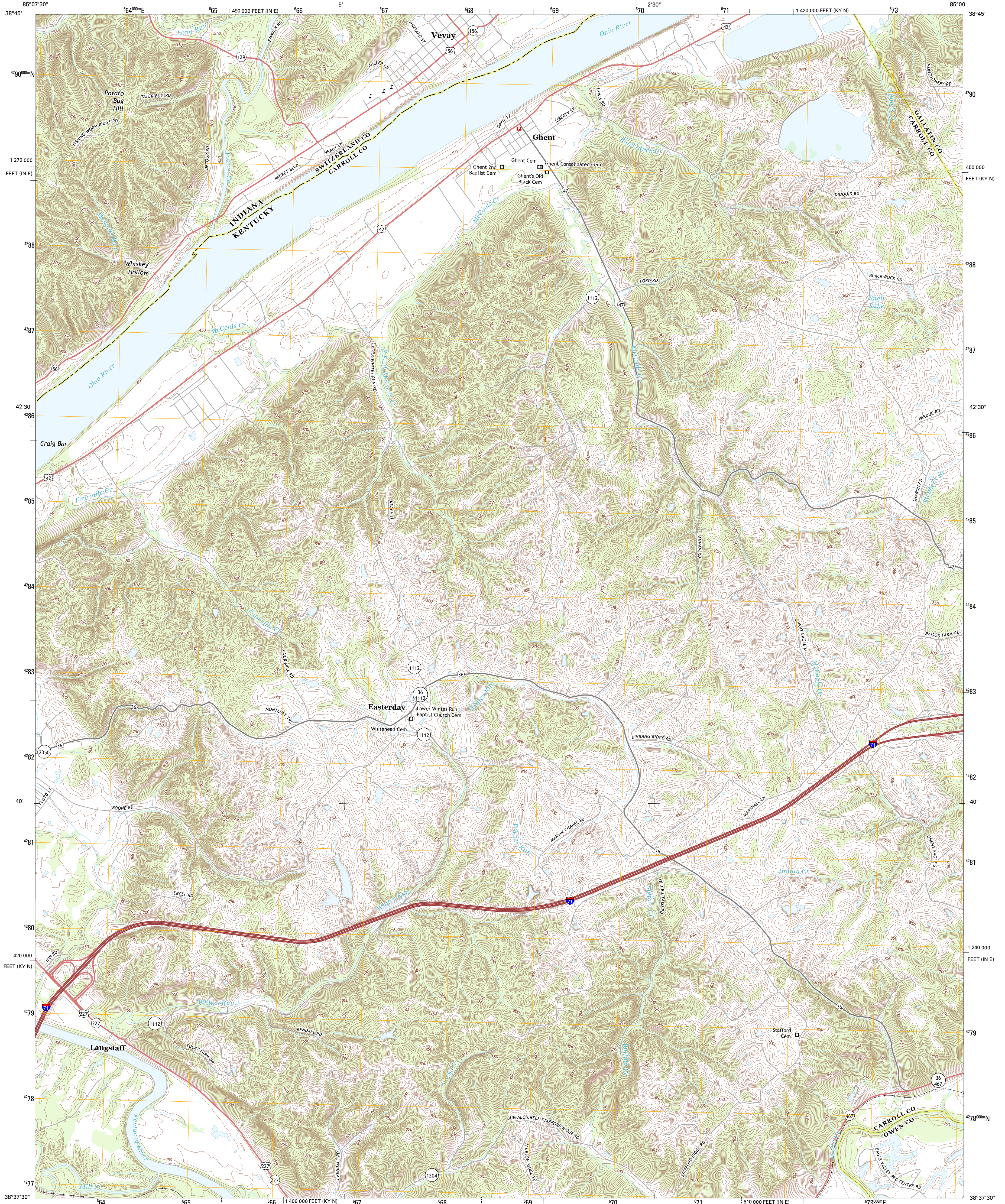




U.S. DEPARTMENT OF THE INTERIOR
U. S. GEOLOGICAL SURVEY

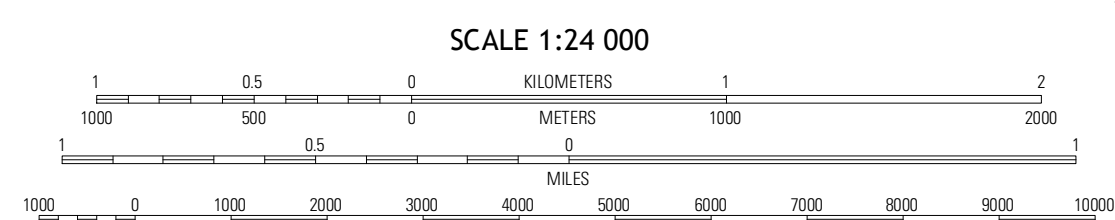
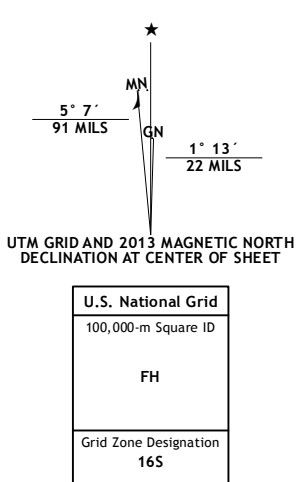


VEVAY SOUTH QUADRANGLE
INDIANA-KENTUCKY
7.5-MINUTE SERIES



Produced by the United States Geological Survey
North American Datum of 1983 (NAD83)
World Geodetic System of 1984 (WGS84). Projection and
1 000-meter grid: Universal Transverse Mercator, Zone 16S
10 000-foot ticks: Kentucky Coordinate System of 1983 (north
zone), Indiana Coordinate System of 1983 (east zone)

Imagery.....NAIP, June 2012
Roads.....©2006-2012 TomTom
Names.....GNIS, 2013
Hydrography.....National Hydrography Dataset, 2012
Contours.....National Elevation Dataset, 2002
Boundaries.....Census, IBWC, IBC, USGS, 1972 - 2012



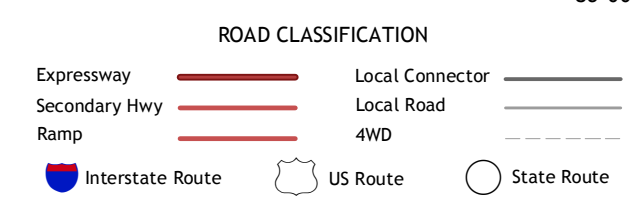
CONTOUR INTERVAL 10 FEET
NORTH AMERICAN VERTICAL DATUM OF 1988

This map was produced to conform with the
National Geospatial Program US Topo Product Standard, 2011.
A metadata file associated with this product is draft version 0.6.11



QUADRANGLE LOCATION

Bennington	Vevay North	Florence
Carrollton	Vevay South	Sanders
Camphersburg	Worthville	New Liberty



VEVAY SOUTH, IN-KY
2013

ADJOINING 7.5 QUADRANGLES