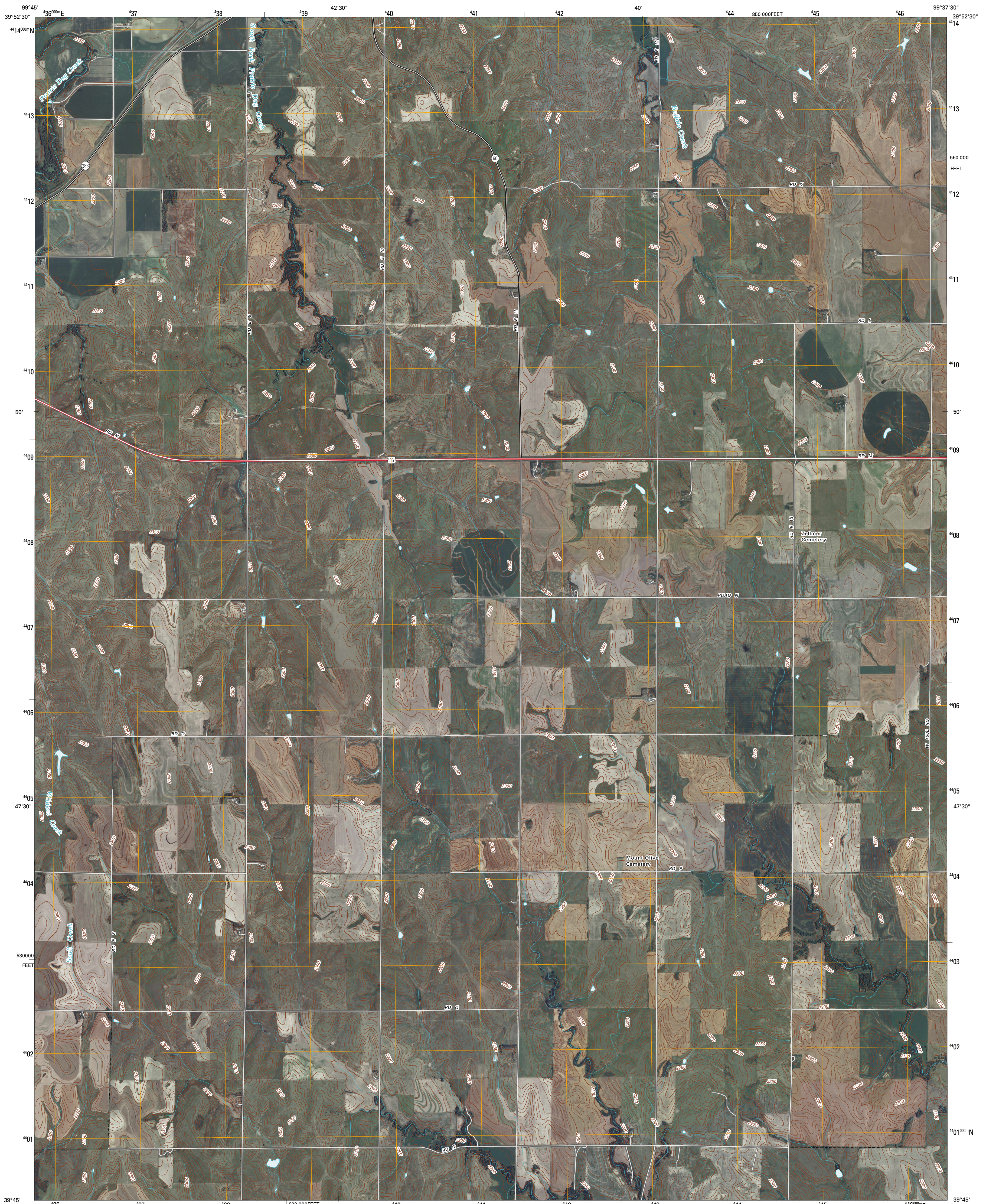




U.S. DEPARTMENT OF THE INTERIOR
U. S. GEOLOGICAL SURVEY

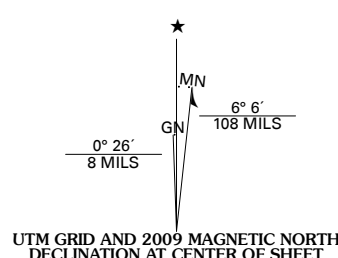


ALMENA SW QUADRANGLE
KANSAS
7.5-MINUTE SERIES

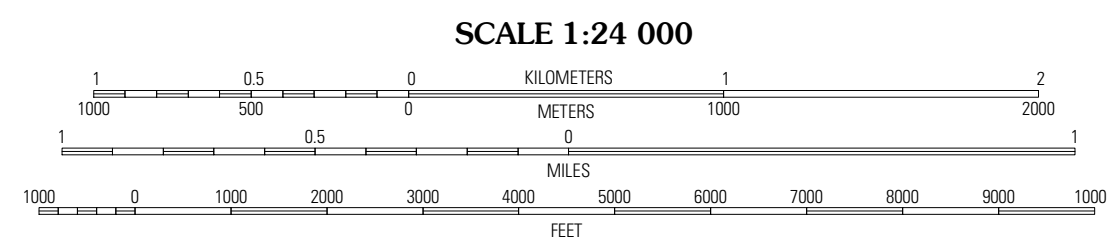


Produced by the United States Geological Survey
North American Datum of 1983 (NAD83)
World Geodetic System of 1984 (WGS84). Projection and
1 000-meter grid: Universal Transverse Mercator, Zone 14S
10 000-foot ticks: Kansas Coordinate System of 1983
(north zone)

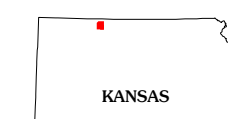
Imagery.....NAP, July 2008
Roads.....National Transportation Dataset, 2005 - 2006
Names.....GNIS, 2008
Hydrography.....National Hydrography Dataset, 2008
Contours.....National Elevation Dataset, 2006



U.S. National Grid
100,000-m Square ID
MK
Grid Zone Designation
14S

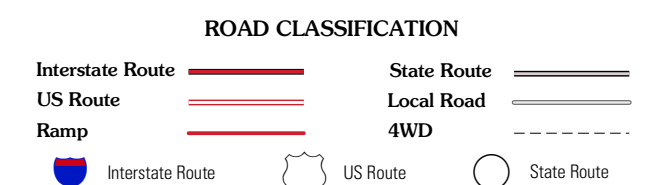


SCALE 1:24 000
CONTOUR INTERVAL 10 FEET
This map was produced to conform with version 0.5.10 of the
draft USGS Standards for 7.5-Minute Quadrangle Maps.
A metadata file associated with this product is also draft version 0.5.10



Norton NE	Almena	Long Island
Calvert	Almena SW	Prairie View
Edmond	Densmore	Logan

ADJOINING 7.5' QUADRANGLES



ALMENA SW, KS
2009