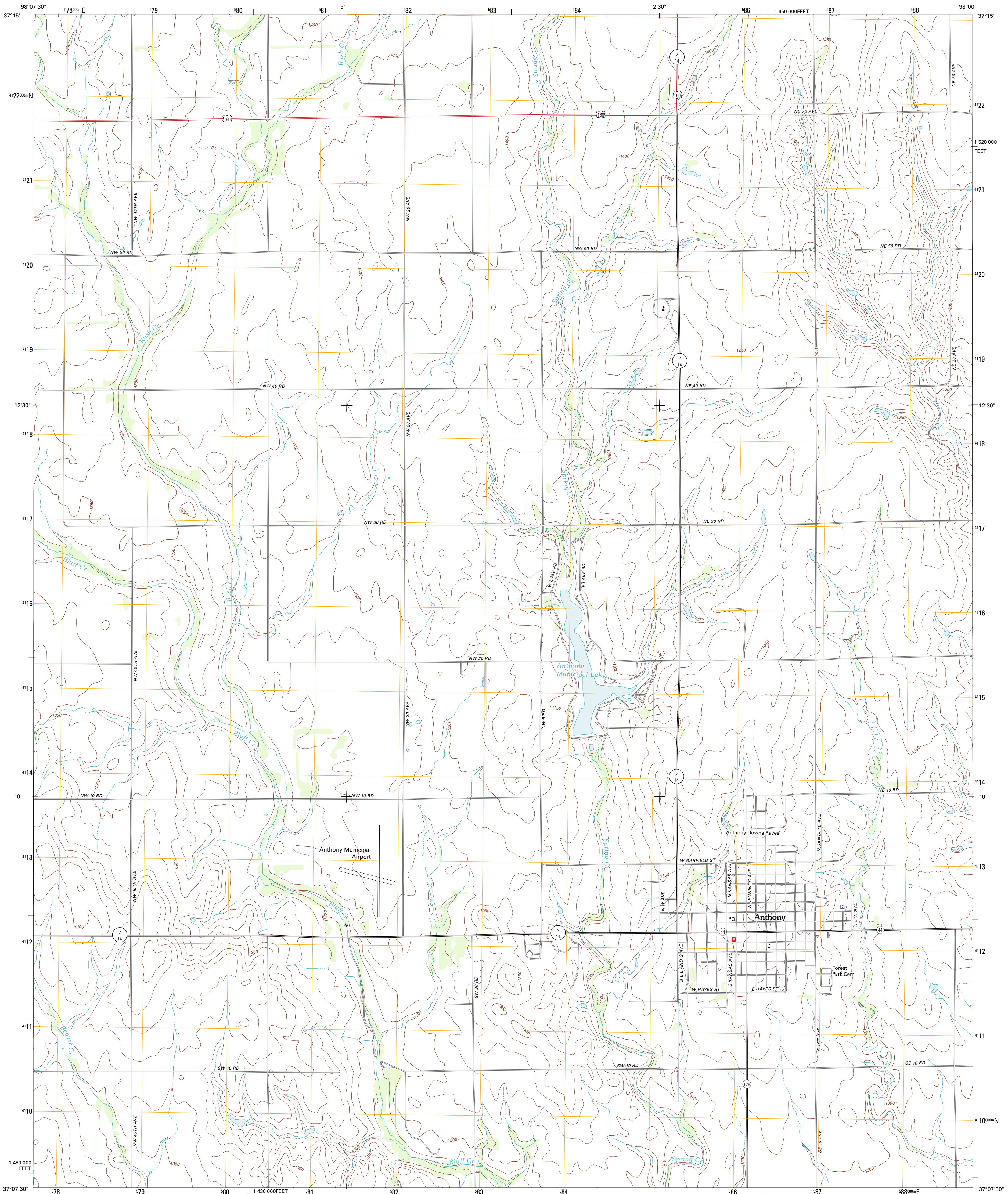




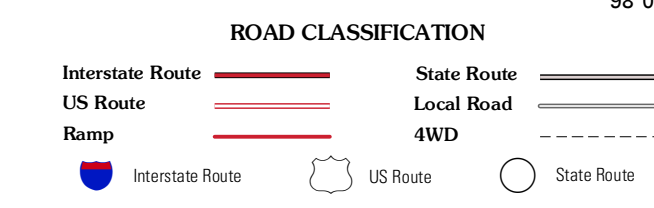
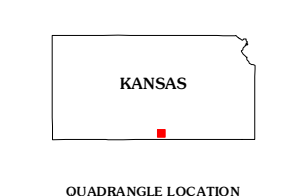
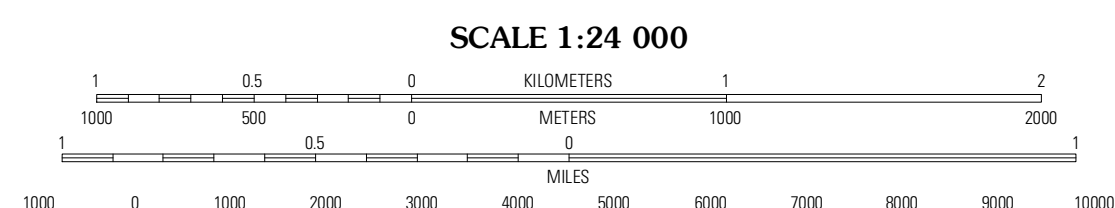
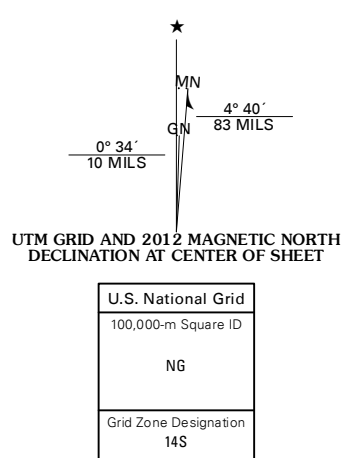
U.S. DEPARTMENT OF THE INTERIOR  
U. S. GEOLOGICAL SURVEY



ANTHONY QUADRANGLE  
KANSAS-HARPER CO.  
7.5-MINUTE SERIES



Produced by the United States Geological Survey  
North American Datum of 1983 (NAD83)  
World Geodetic System of 1984 (WGS84). Projection and  
1 000-meter grid: Universal Transverse Mercator, Zone 14S  
10 000-foot ticks: Kansas Coordinate System of 1983 (south zone)



QUADRANGLE LOCATION

Crystal Springs	Harper	Danville
Antica	<b>Anthony</b>	Bluff City NW
Wakaron	Spring	Bluff City West

CONTOUR INTERVAL 10 FEET  
NORTH AMERICAN VERTICAL DATUM OF 1988  
This map was produced to conform with the National Geospatial Program US Topo Product Standard, 2011. A metadata file associated with this product is draft version 0.6.4

ANTHONY, KS  
2012

ADJOINING 7.5 QUADRANGLES