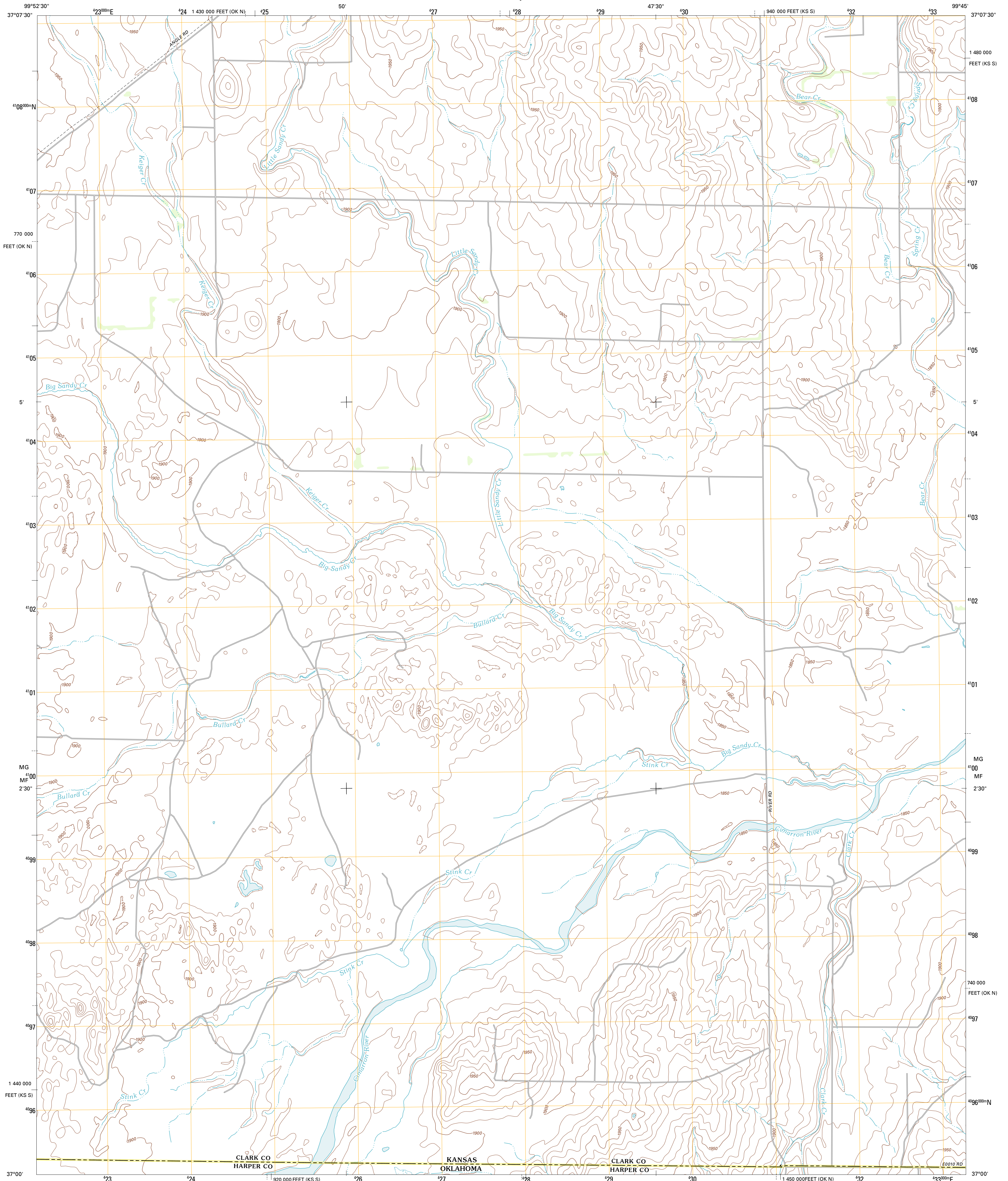




U.S. DEPARTMENT OF THE INTERIOR
U. S. GEOLOGICAL SURVEY

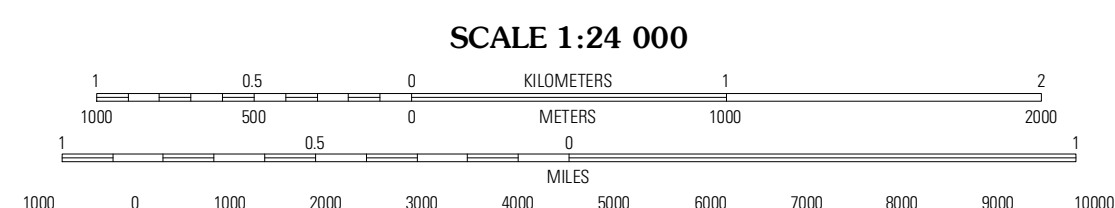
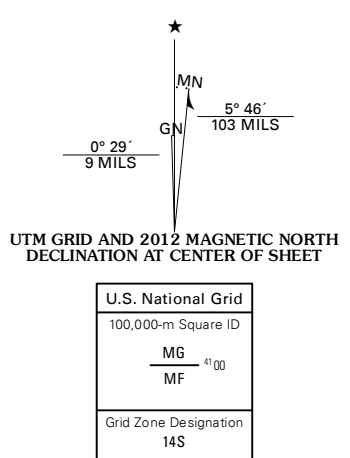


ASHLAND SE QUADRANGLE
KANSAS-OKLAHOMA
7.5-MINUTE SERIES

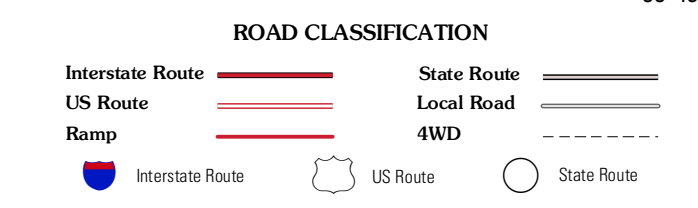
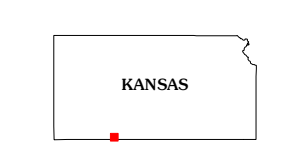


Produced by the United States Geological Survey
North American Datum of 1983 (NAD83)
World Geodetic System of 1984 (WGS84). Projection and
1 000-meter grid: Universal Transverse Mercator, Zone 14S
10 000-foot ticks: Kansas Coordinate System of 1983 (south zone), Oklahoma Coordinate System of 1983 (north zone)

Imagery: NAIP, June 2010 - July 2010
Roads: ©2006-2011 TomTom
Names: GNIS, 2012
Hydrography: National Hydrography Dataset, 2010
Contours: National Elevation Dataset, 2006
Boundaries: Census, IBWC, IBC, USGS, 1972 - 2012



CONTOUR INTERVAL 10 FEET
NORTH AMERICAN VERTICAL DATUM OF 1988
This map was produced to conform with the
National Geospatial Program US Topo Product Standard, 2011.
A metadata file associated with this product is draft version 0.6.4



QUADRANGLE LOCATION

Ashland NW	Ashland	Sika
Englewood	Ashland SE	Sika SW
Rosston NW	Rosston NE	Buffalo NW

ASHLAND SE, KS-OK
2012

ADJOINING 7.5' QUADRANGLES