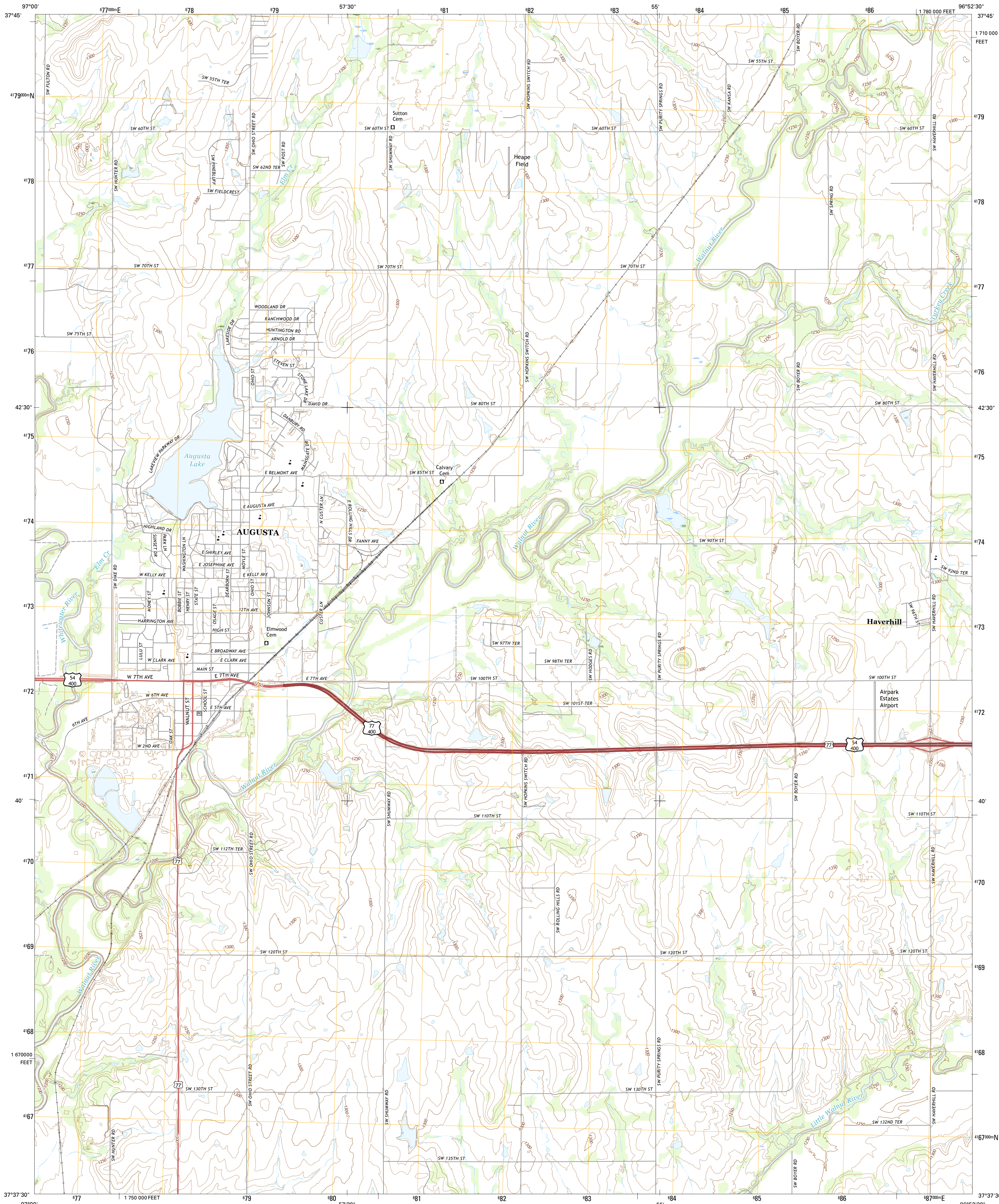




U.S. DEPARTMENT OF THE INTERIOR  
U.S. GEOLOGICAL SURVEY



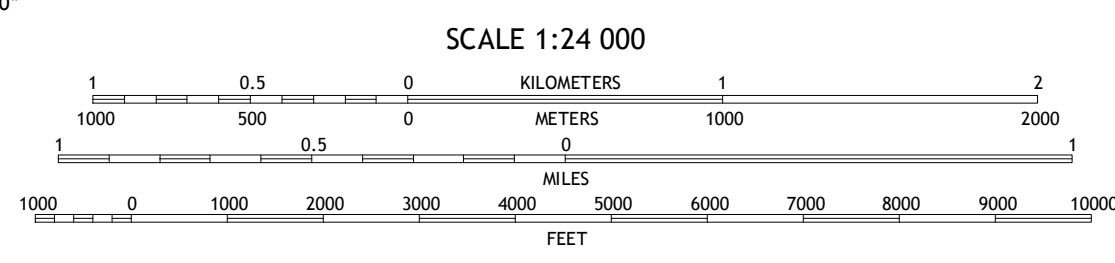
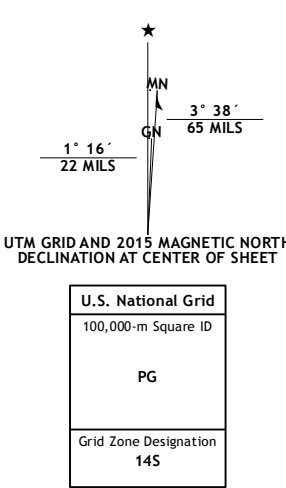
AUGUSTA QUADRANGLE  
KANSAS-BUTLER CO.  
7.5-MINUTE SERIES



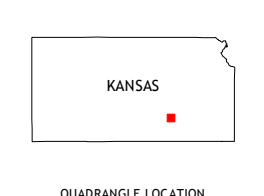
Produced by the United States Geological Survey  
North American Datum of 1983 (NAD83)  
World Geodetic System of 1984 (WGS84). Projection and  
1 000-meter grid: Universal Transverse Mercator, Zone 14S  
10 000-foot ticks: Kansas Coordinate System of 1983 (south  
zone)

This map is not a legal document. Boundaries may be  
generalized for this map scale. Private lands within government  
reservations may not be shown. Obtain permission before  
entering private lands.

Imagery: NAIIP, July 2014  
Roads: U.S. Census Bureau, 2014 - 2015  
Names: GNIS, 2015  
Hydrography: National Hydrography Dataset, 2014  
Contours: National Elevation Dataset, 2014  
Boundaries: Multiple sources; see metadata file 1972 - 2015  
Public Land Survey System: BLM, 2015  
Wetlands: FWS National Wetlands Inventory 1977 - 2014



CONTOUR INTERVAL 10 FEET  
NORTH AMERICAN VERTICAL DATUM OF 1988  
This map was produced to conform with the  
National Geospatial Program US Topo Product Standard, 2011.  
A metadata file associated with this product is draft version 0.6.19



ROAD CLASSIFICATION

Expressway	Local Connector
Secondary Hwy	Local Road
Ramp	4WD
Interstate Route	US Route
	State Route

ADJOINING QUADRANGLES

1	2	3
4	5	6
7	8	

1 Benton  
2 El Dorado SW  
3 El Dorado  
4 Santa Fe Lake  
5 Leon  
6 Douglas  
7 Gordon  
8 Augusta SE

AUGUSTA, KS  
2015

