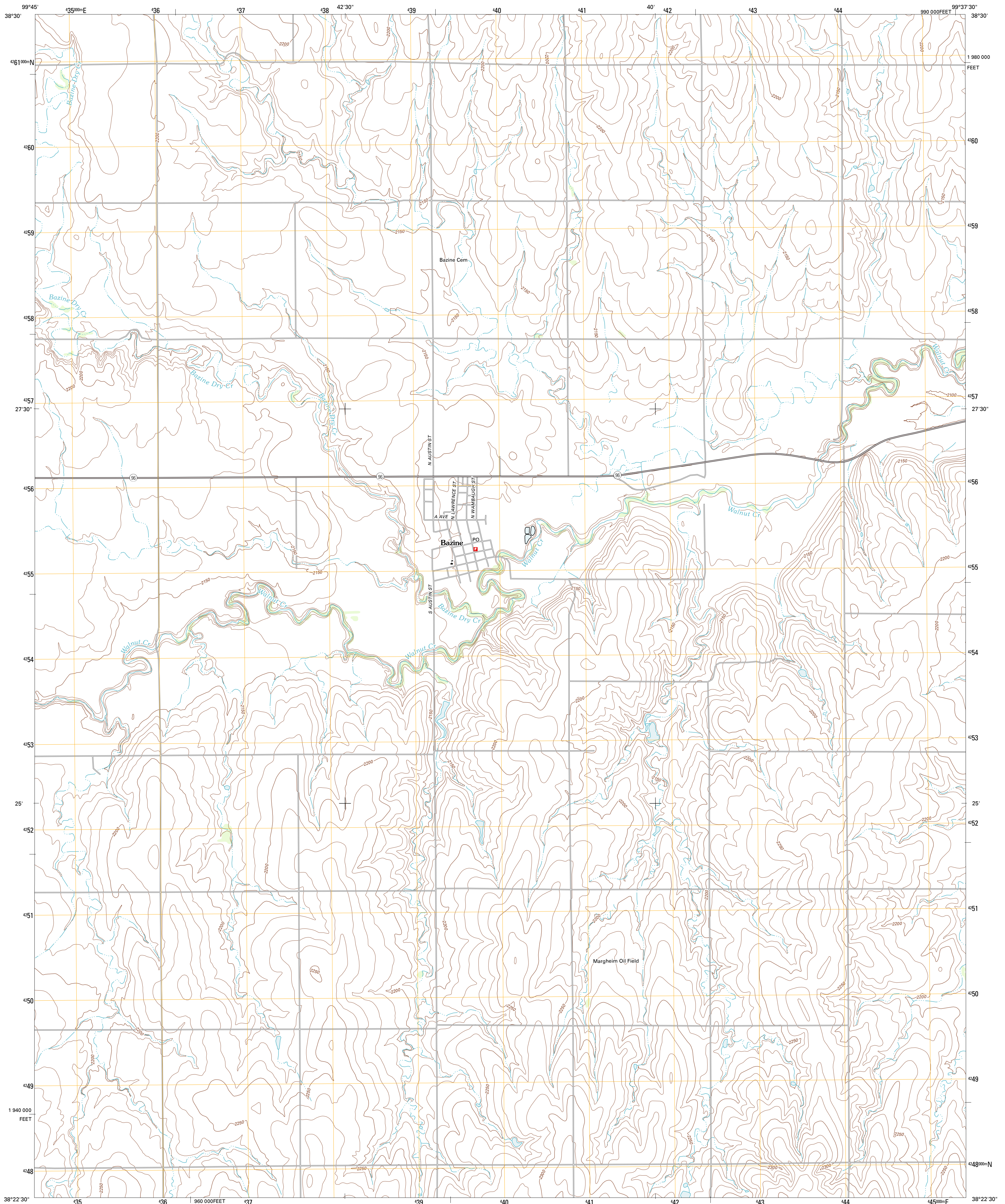




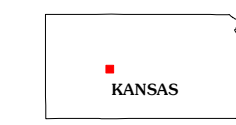
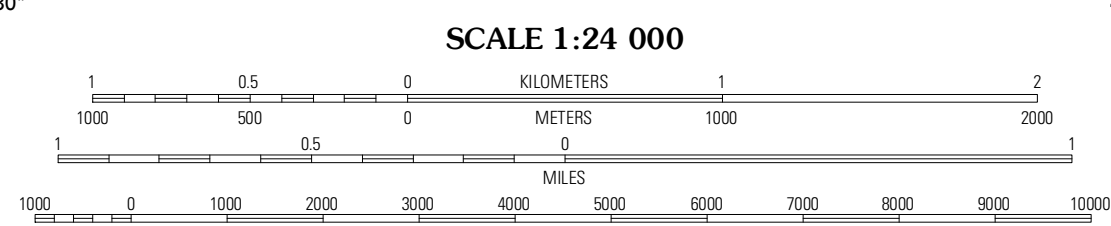
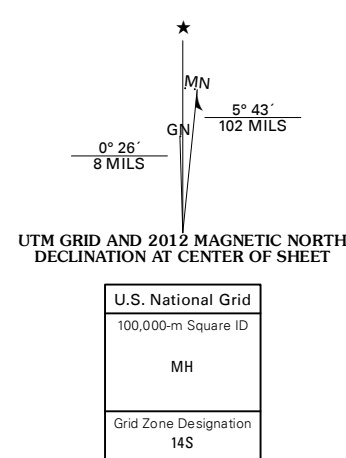
U.S. DEPARTMENT OF THE INTERIOR
U. S. GEOLOGICAL SURVEY



BAZINE QUADRANGLE
KANSAS-NESS CO.
7.5-MINUTE SERIES

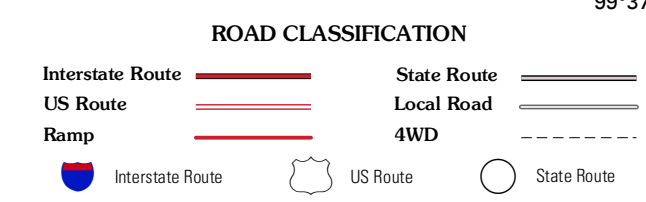


Produced by the United States Geological Survey
North American Datum of 1983 (NAD83)
World Geodetic System of 1984 (WGS84). Projection and
1 000-meter grid: Universal Transverse Mercator, Zone 14S
10 000-foot ticks: Kansas Coordinate System of 1983 (south
zone)



QUADRANGLE LOCATION

Ransom SE	McCracken SW	McCracken NE
Ness City NE	Bazine	Alexander
Ness City SE	Bazine SW	Bazine SE



CONTOUR INTERVAL 10 FEET
NORTH AMERICAN VERTICAL DATUM OF 1988

This map was produced to conform with the
National Geospatial Program US Topo Product Standard, 2011.
A metadata file associated with this product is draft version 0.6.4

BAZINE, KS
2012

ADJOINING 7.5 QUADRANGLES