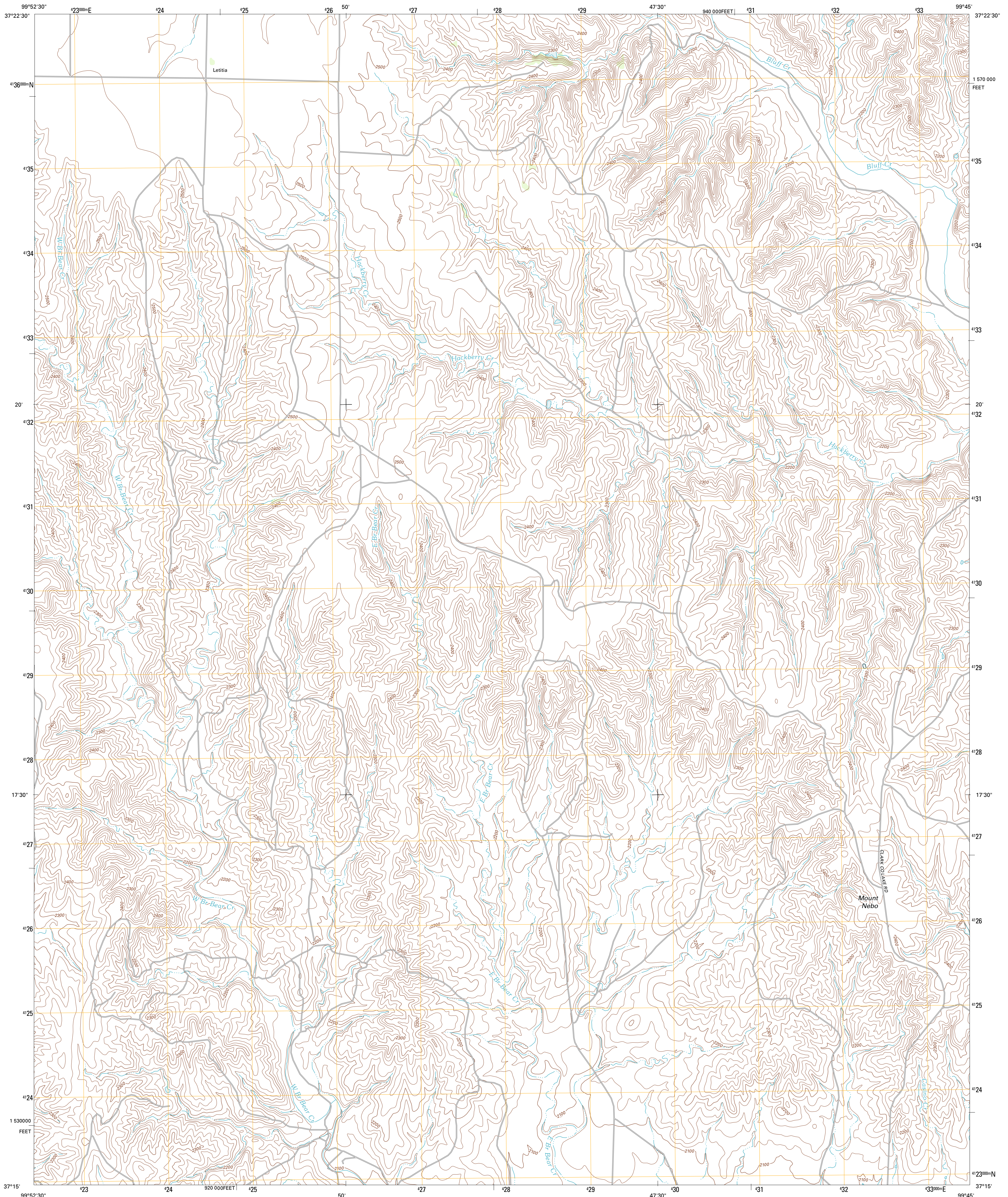




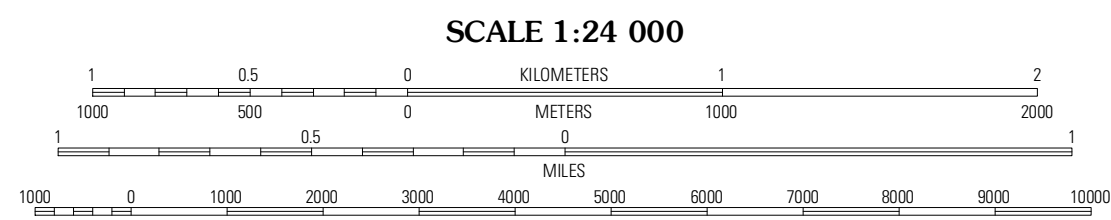
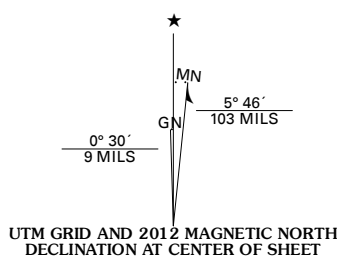
U.S. DEPARTMENT OF THE INTERIOR
U. S. GEOLOGICAL SURVEY



BLOOM SE QUADRANGLE
KANSAS-CLARK CO.
7.5-MINUTE SERIES

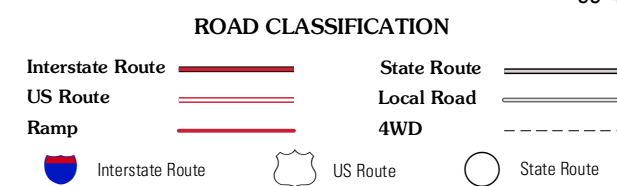
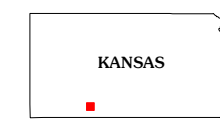


Produced by the United States Geological Survey
North American Datum of 1983 (NAD83)
World Geodetic System of 1984 (WGS84) Projection and
1 000-meter grid: Universal Transverse Mercator, Zone 14S
10 000-foot ticks: Kansas Coordinate System of 1983 (south zone)



CONTOUR INTERVAL 20 FEET
NORTH AMERICAN VERTICAL DATUM OF 1988

This map was produced to conform with the
National Geospatial Program US Topo Product Standard, 2011.
A metadata file associated with this product is draft version 0.6.4



QUADRANGLE LOCATION

Bloom	Simmons Creek	Mount Jesus NW
Bloom SW	Bloom SE	Mount Jesus
Ashland NW	Ashland	Sika

Imagery.....N.A.P., June 2010 - July 2010
Roads.....©2006-2011 TomTom
Names.....GNIS, 2012
Hydrography.....National Hydrography Dataset, 2010
Contours.....National Elevation Dataset, 2006
Boundaries.....Census, IBWC, IBC, USGS, 1972 - 2012

U.S. National Grid
100,000m Square ID
MG
Grid Zone Designation
14S

BLOOM SE, KS
2012

ADJOINING 7.5 QUADRANGLES