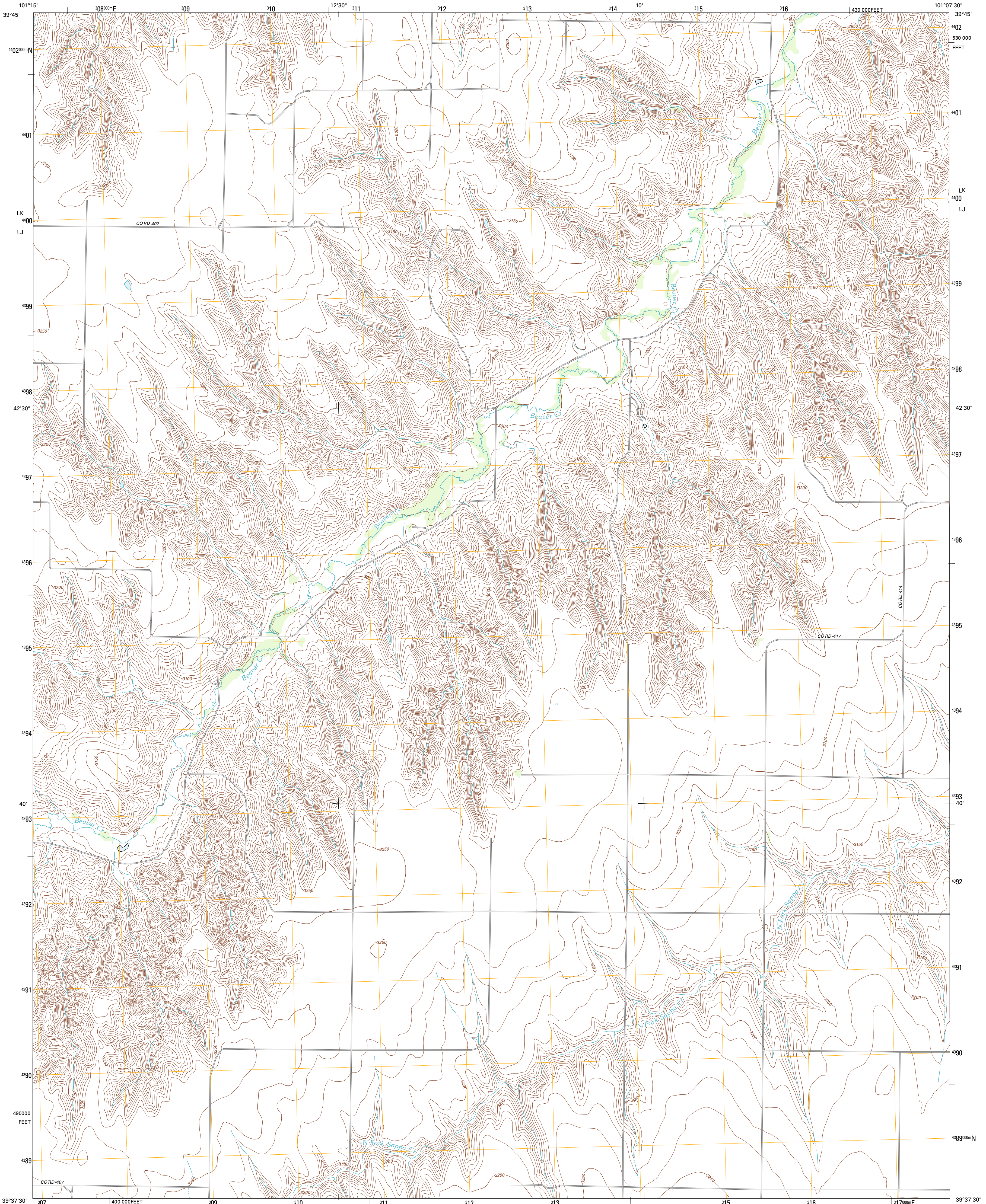




U.S. DEPARTMENT OF THE INTERIOR  
U. S. GEOLOGICAL SURVEY

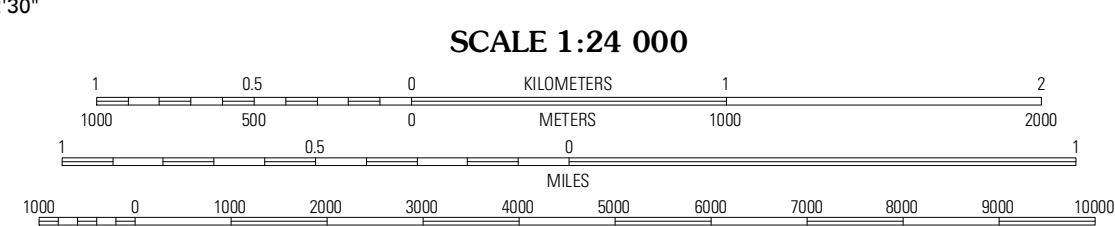
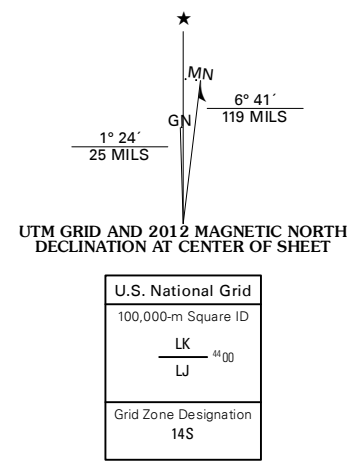


CHARDON NW QUADRANGLE  
KANSAS-RAWLINS CO.  
7.5-MINUTE SERIES



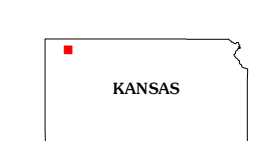
Produced by the United States Geological Survey  
North American Datum of 1983 (NAD83)  
World Geodetic System of 1984 (WGS84). Projection and  
1,000-meter grid: Universal Transverse Mercator, Zone 14S  
10,000-foot ticks: Kansas Coordinate System of 1983 (north  
zone)

Imagery.....N.A.I.P. July 2010  
Roads.....©2006-2011 TomTom  
Names.....GNIS, 2012  
Hydrography.....National Hydrography Dataset, 2010  
Contours.....National Elevation Dataset, 2012  
Boundaries.....Census, IBWC, IBC, USGS, 1972 - 2012



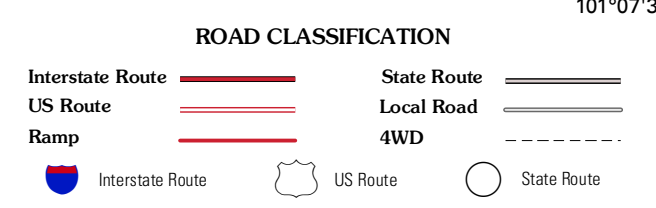
CONTOUR INTERVAL 10 FEET  
NORTH AMERICAN VERTICAL DATUM OF 1988

This map was produced to conform with the  
National Geospatial Program US Topo Product Standard, 2011.  
A metadata file associated with this product is draft version 0.6.4



QUADRANGLE LOCATION

McDonald	Beardsley	Atwood
Dewey Ranch	Chardon NW	Chardon
Dewey Ranch SE	Chardon SW	Chardon SE



CHARDON NW, KS  
2012

ADJOINING 7.5' QUADRANGLES