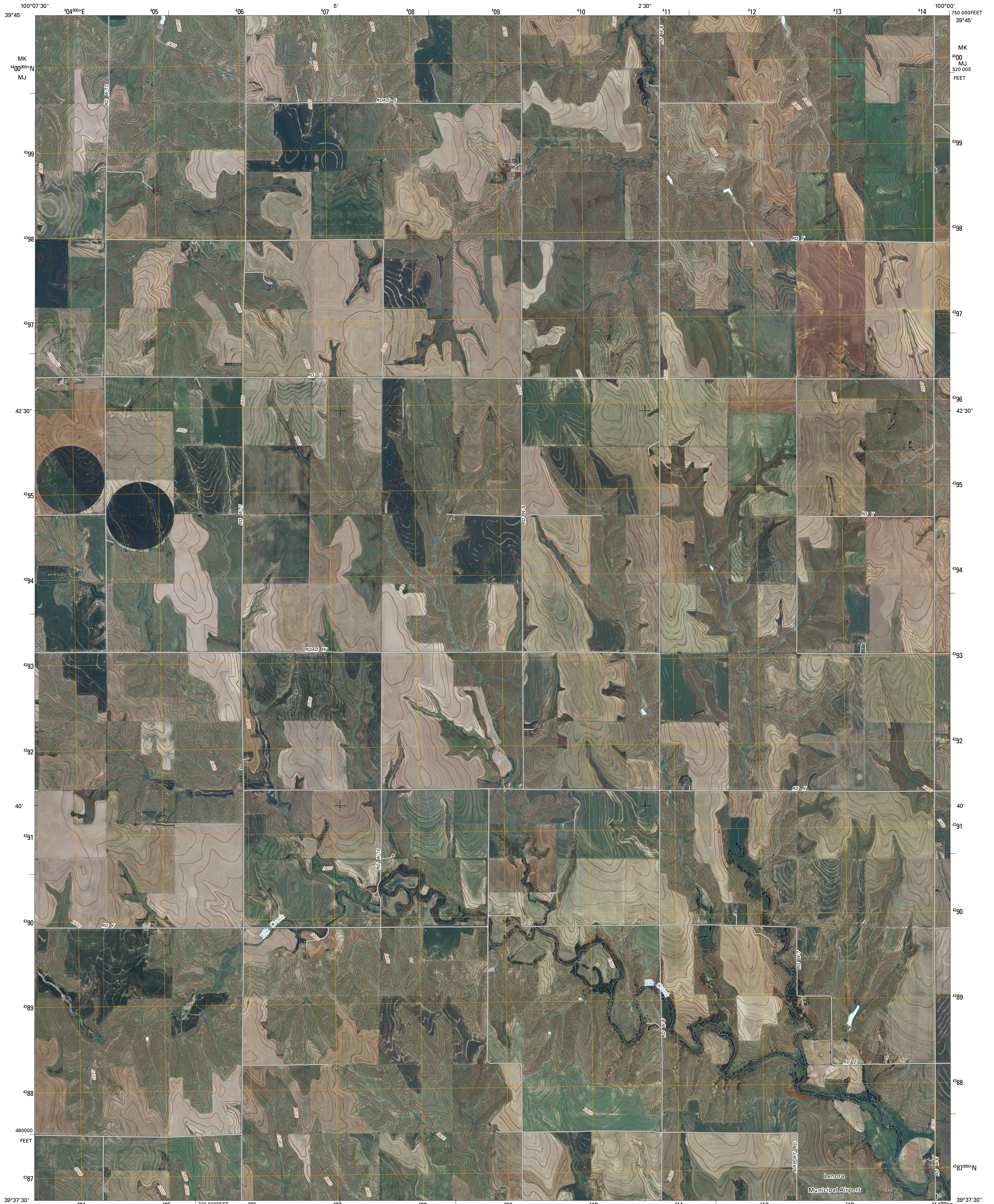




U.S. DEPARTMENT OF THE INTERIOR
U. S. GEOLOGICAL SURVEY

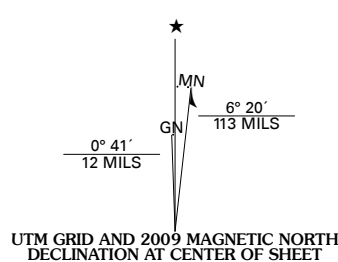


CLAYTON NE QUADRANGLE
KANSAS
7.5-MINUTE SERIES

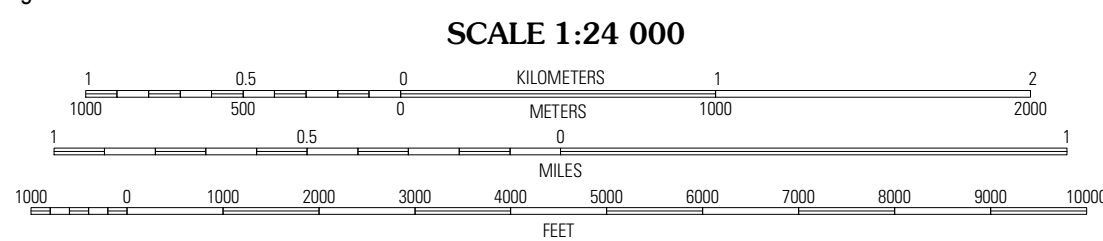


Produced by the United States Geological Survey
North American Datum of 1983 (NAD83)
World Geodetic System of 1984 (WGS84). Projection and
1 000-meter grid: Universal Transverse Mercator, Zone 14S
10 000-foot ticks: Kansas Coordinate System of 1983
(north zone)

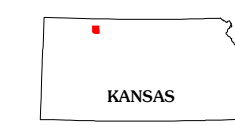
Imagery.....NAIP, July 2008
Roads.....National Transportation Dataset, 2005
Names.....GNIS, 2008
Hydrography.....National Hydrography Dataset, 2008
Contours.....National Elevation Dataset, 2006



U.S. National Grid	
100,000-m Square ID	MK 4100
Grid Zone Designation	14S

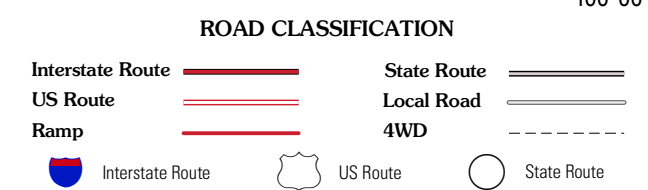


SCALE 1:24 000
CONTOUR INTERVAL 10 FEET
This map was produced to conform with version 0.5.10 of the
draft USGS Standards for 7.5-Minute Quadrangle Maps.
A metadata file associated with this product is also draft version 0.5.10



QUADRANGLE LOCATION		
Norcat	Reger	Norton
Clayton	Clayton NE	Edmond NW
Clayton SW	Lenora West	Lenora East

ADJOINING 7.5 QUADRANGLES



CLAYTON NE, KS
2009