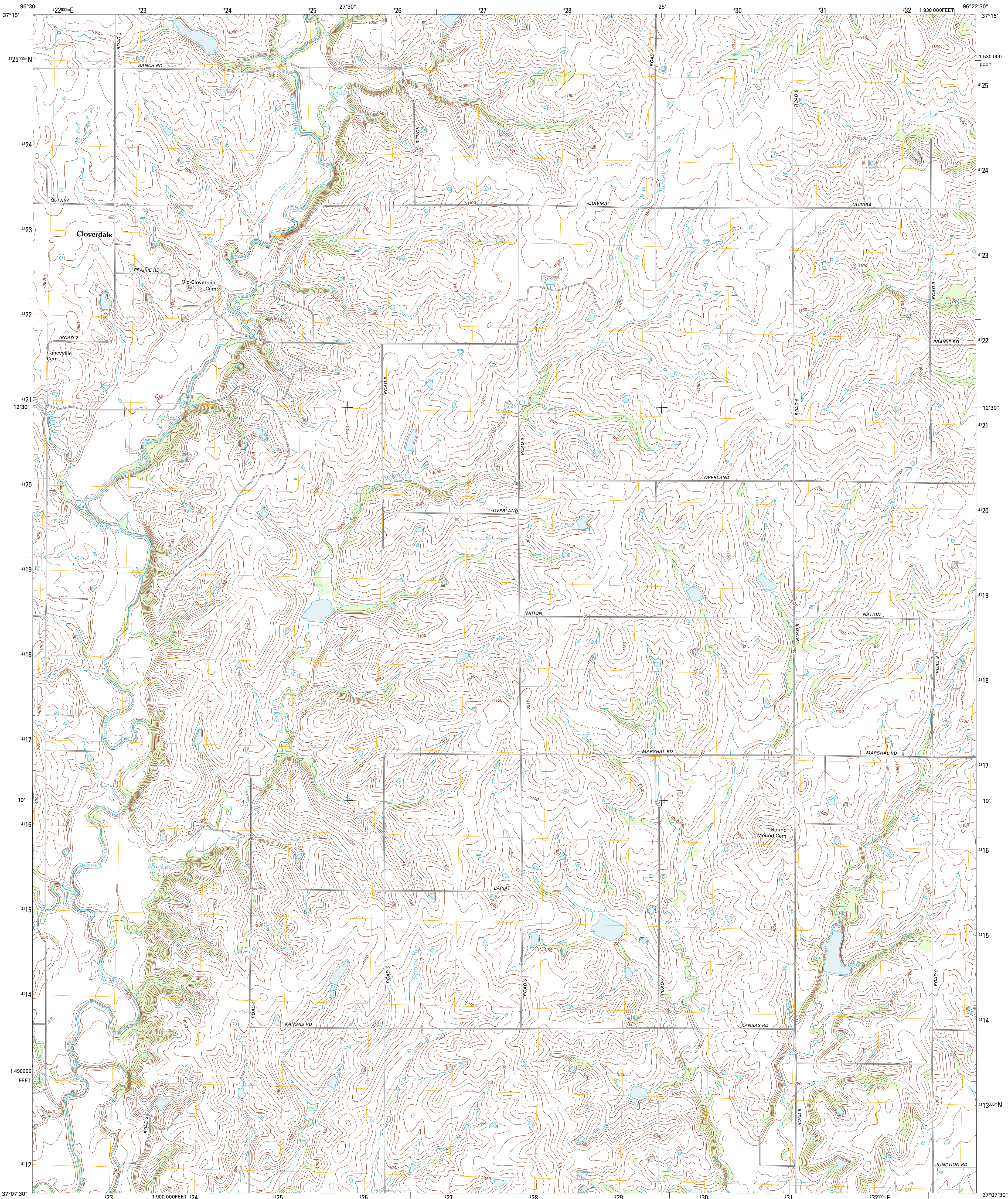




U.S. DEPARTMENT OF THE INTERIOR  
U. S. GEOLOGICAL SURVEY

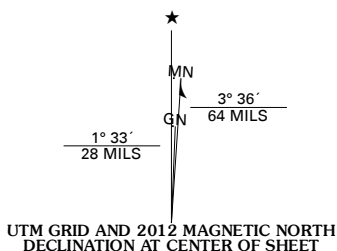


CLOVERDALE QUADRANGLE  
KANSAS-CHAUTAUQUA CO.  
7.5-MINUTE SERIES

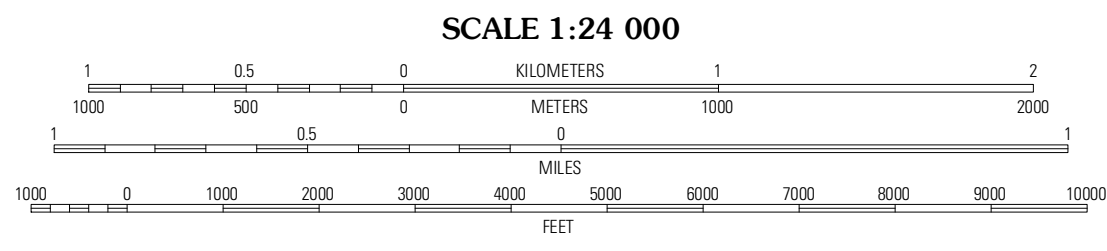


Produced by the United States Geological Survey  
North American Datum of 1983 (NAD83)  
World Geodetic System of 1984 (WGS84). Projection and  
1 000-meter grid: Universal Transverse Mercator, Zone 14S  
10 000-foot ticks: Kansas Coordinate System of 1983 (south  
zone)

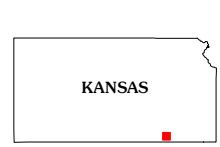
Imagery.....©NAIP, June 2010  
Roads.....©2006-2011 TomTom  
Names.....GNIS, 2012  
Hydrography.....National Hydrography Dataset, 2010  
Contours.....National Elevation Dataset, 2006  
Boundaries.....Census, BWC, BIC, USGS, 1972 - 2012



|   |
|---|
| U.S. National Grid<br>100,000-m Square ID<br>06 |
| Grid Zone Designation<br>14S                    |

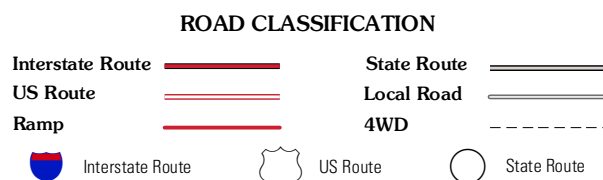


CONTOUR INTERVAL 10 FEET  
NORTH AMERICAN VERTICAL DATUM OF 1988  
This map was produced to conform with the  
National Geospatial Program US Topo Product Standard, 2011.  
A metadata file associated with this product is draft version 0.6.4



|                       |                       |             |
|-----------------------|-----------------------|-------------|
| Grand<br>Summit       | Grenola               | Moline      |
| Dexter<br>NE          | Cloverdale            | Elgin<br>NE |
| Cedar<br>Vale<br>West | Cedar<br>Vale<br>East | Elgin       |

ADJOINING 7.5' QUADRANGLES



CLOVERDALE, KS  
2012