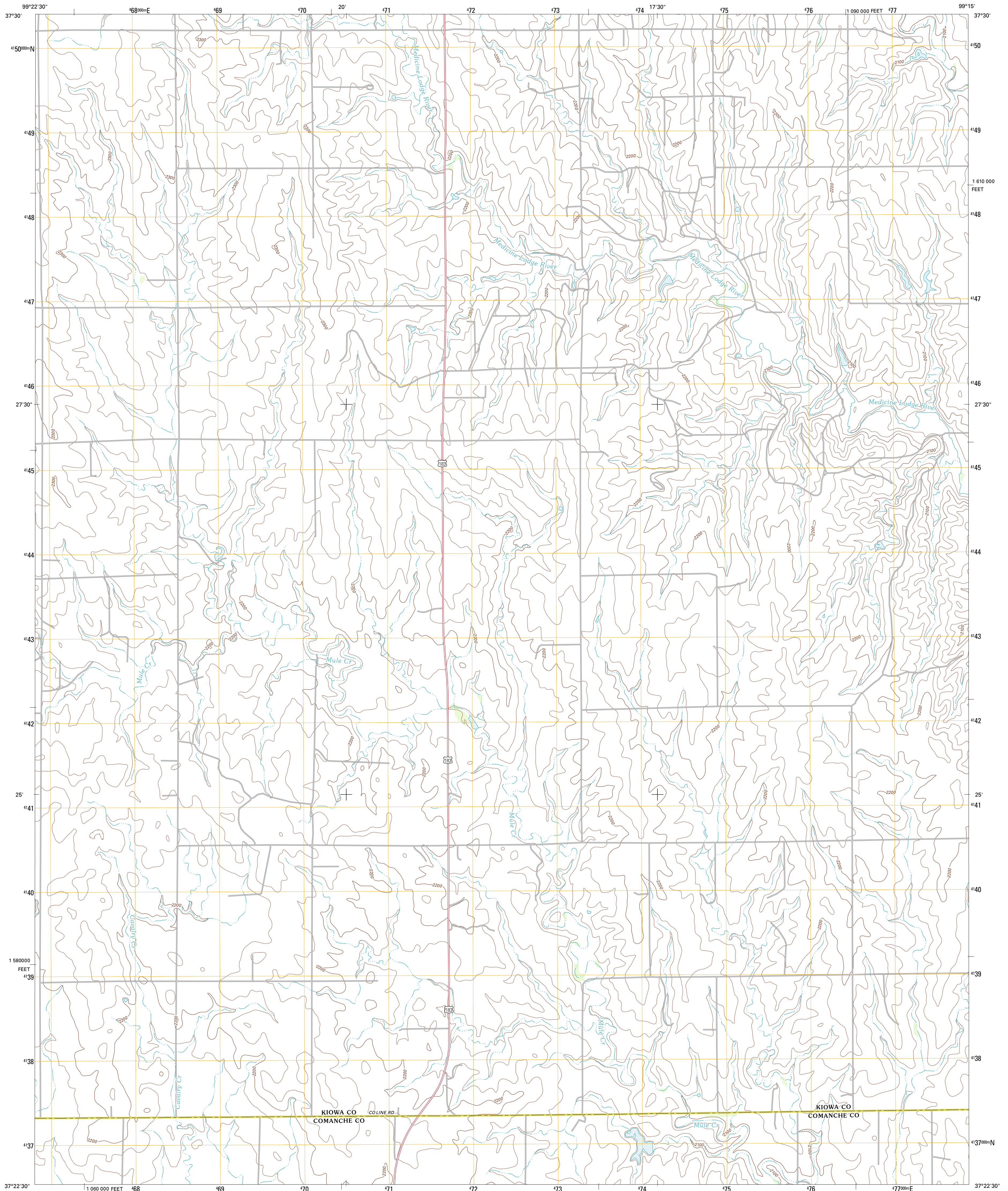




U.S. DEPARTMENT OF THE INTERIOR
U. S. GEOLOGICAL SURVEY



COLDWATER NE QUADRANGLE
KANSAS
7.5-MINUTE SERIES



Produced by the United States Geological Survey
North American Datum of 1983 (NAD83)
World Geodetic System of 1984 (WGS84). Projection and
1 000-meter grid: Universal Transverse Mercator, Zone 14S
10 000-foot ticks: Kansas Coordinate System of 1983 (south
zone)

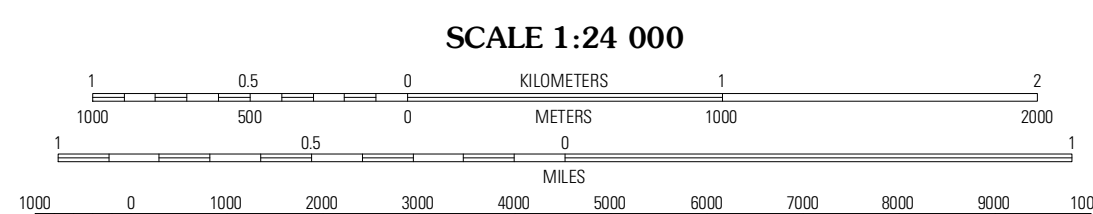
Imagery.....NAIP, June 2010
Roads.....2006-2011 TomTom
Names.....GNIS, 2012
Hydrography.....National Hydrography Dataset, 2010
Contours.....National Elevation Dataset, 2006
Boundaries.....Census, IBWC, IBC, USGS, 1972-2012

UTM GRID AND 2012 MAGNETIC NORTH
DECLINATION AT CENTER OF SHEET

8° 11' 30" N
3 MILS

8° 28' 30" N
97 MILS

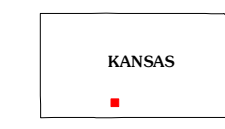
U.S. National Grid
100,000m Square ID
MG
Grid Zone Designation
14S



SCALE 1:24 000

CONTOUR INTERVAL 20 FEET
NORTH AMERICAN VERTICAL DATUM OF 1988

This map was produced to conform with the
National Geospatial Program US Topo Product Standard, 2011.
A metadata file associated with this product is draft version 0.6.4



QUADRANGLE LOCATION

Mullinville	Greensburg	Brenham
East Kiowa Creek North	Coldwater NE	Iron Mountain
East Kiowa Creek South	Coldwater	Wilmore

ADJOINING 7.5' QUADRANGLES

ROAD CLASSIFICATION

Interstate Route
US Route
Ramp

State Route
Local Road
4WD

COLDWATER NE, KS
2012