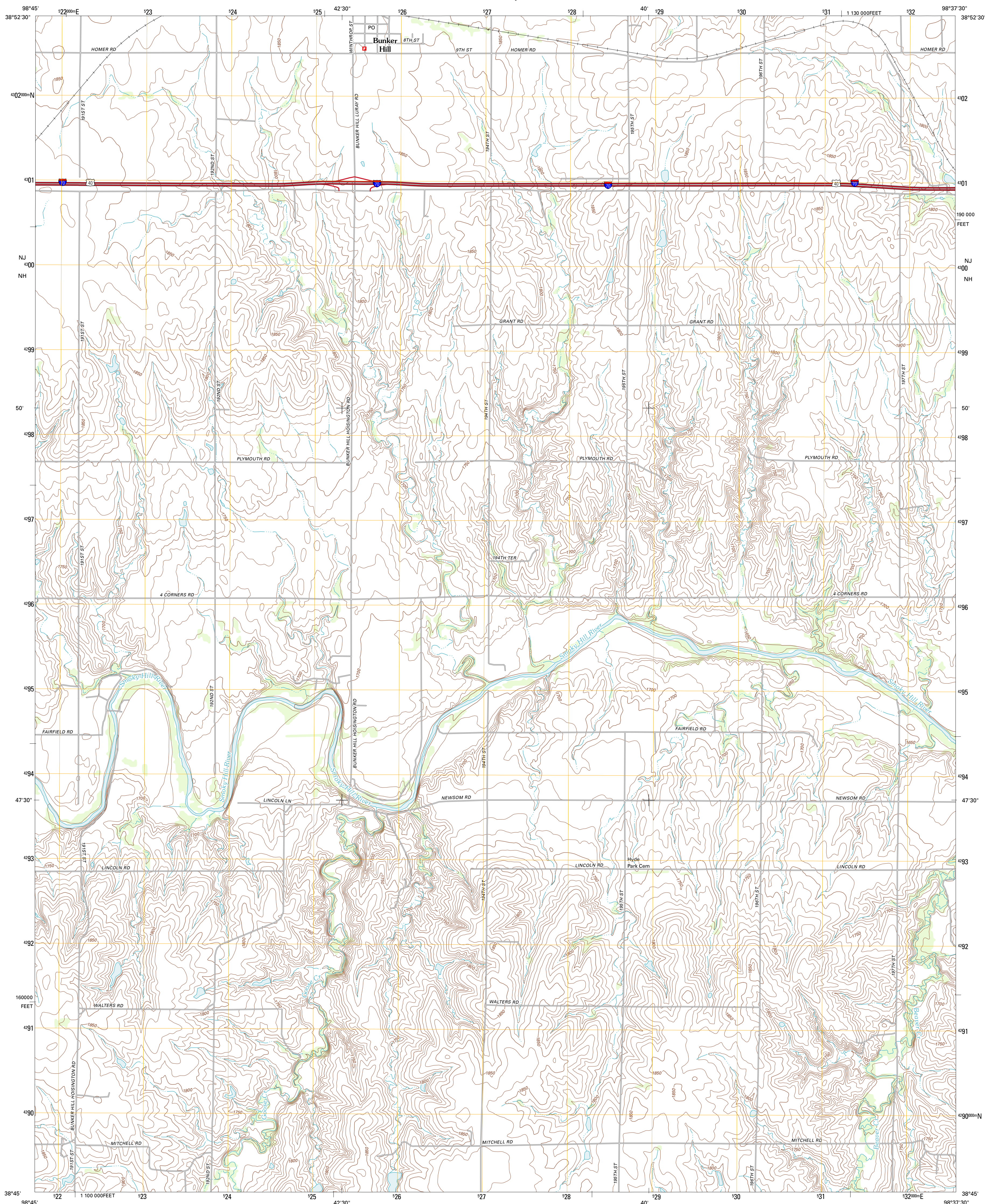




U.S. DEPARTMENT OF THE INTERIOR  
U. S. GEOLOGICAL SURVEY

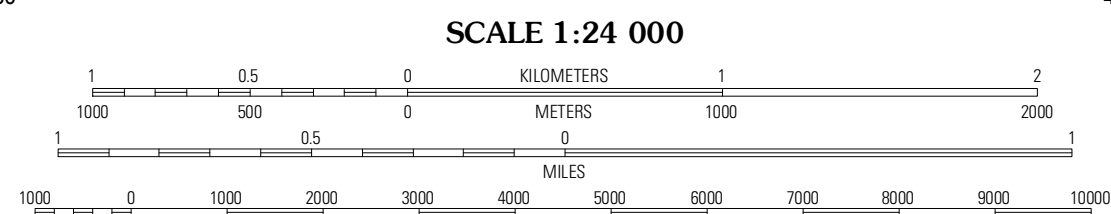
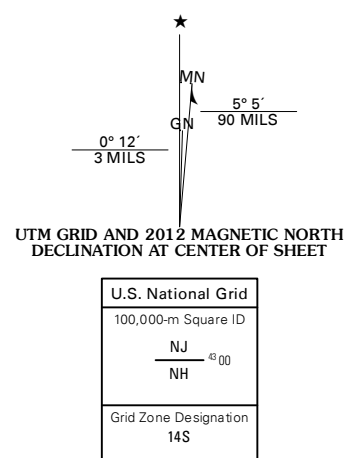


DORRANCE SW QUADRANGLE  
KANSAS-RUSSELL CO.  
7.5-MINUTE SERIES



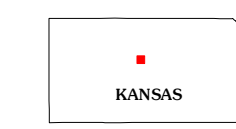
Produced by the United States Geological Survey  
North American Datum of 1983 (NAD83)  
World Geodetic System of 1984 (WGS84), Projection and  
1 000-meter grid: Universal Transverse Mercator, Zone 14S  
10 000-foot ticks: Kansas Coordinate System of 1983 (north zone)

Imagery:.....N.A.I.P., July 2010  
Roads:.....©2006-2011 TomTom  
Names:.....GNIS, 2012  
Hydrography:.....National Hydrography Dataset, 2010  
Contours:.....National Elevation Dataset, 2006  
Boundaries:.....Census, IBWC, IBC, USGS, 1972 - 2012



CONTOUR INTERVAL 10 FEET  
NORTH AMERICAN VERTICAL DATUM OF 1988

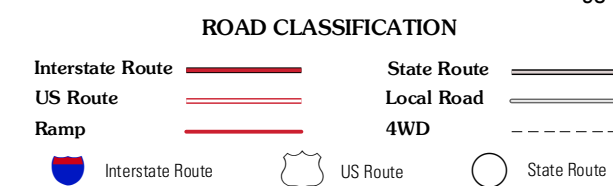
This map was produced to conform with the  
National Geospatial Program US Topo Product Standard, 2011.  
A metadata file associated with this product is draft version 0.6.4



QUADRANGLE LOCATION

Russell	Dorrance NW	Dorrance NE
Homer	Dorrance SW	Dorrance
Susank	Beaver	Dubuque

ADJOINING 7.5' QUADRANGLES



DORRANCE SW, KS  
2012