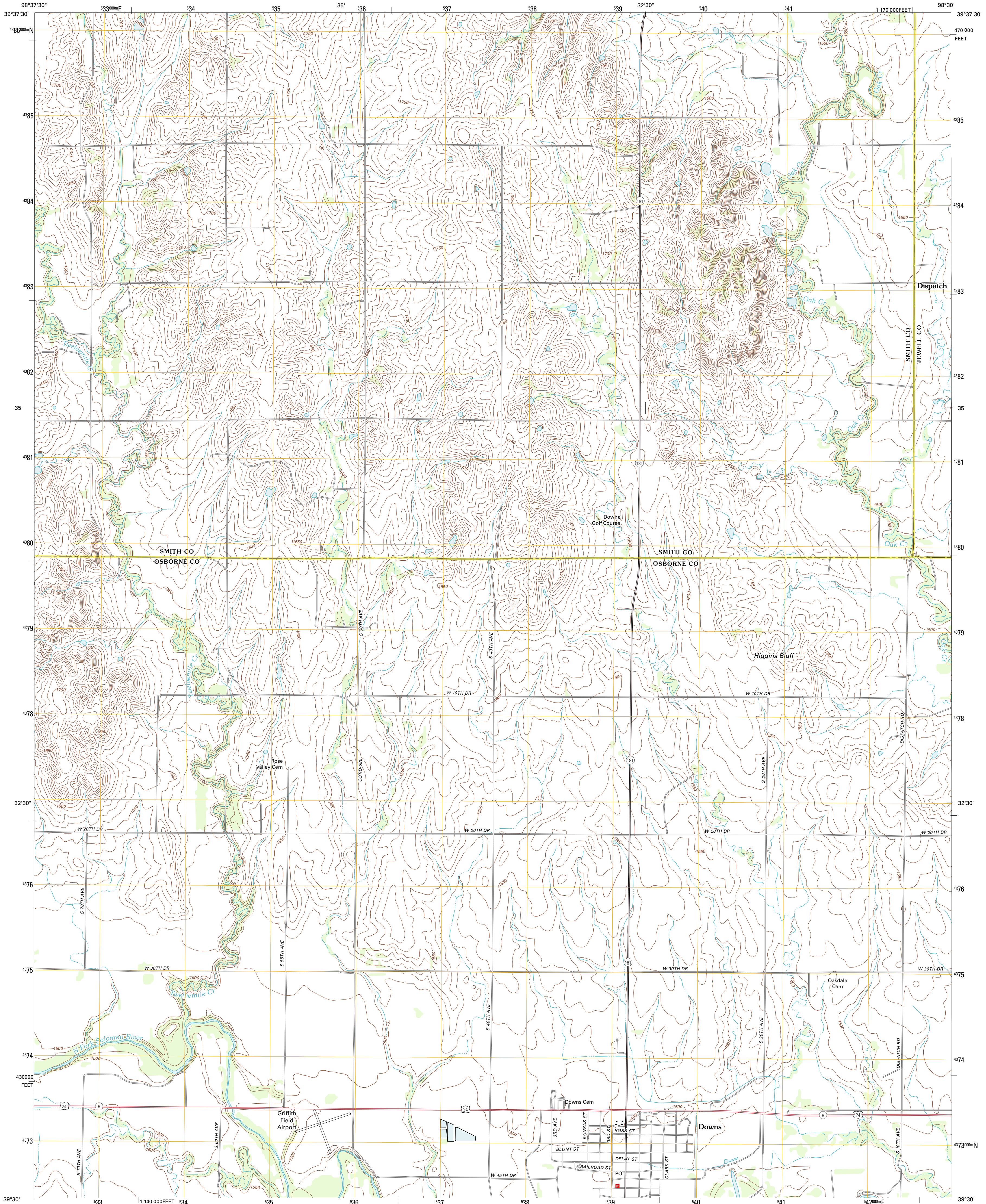




U.S. DEPARTMENT OF THE INTERIOR  
U. S. GEOLOGICAL SURVEY



DOWNNS NORTH QUADRANGLE  
KANSAS  
7.5-MINUTE SERIES

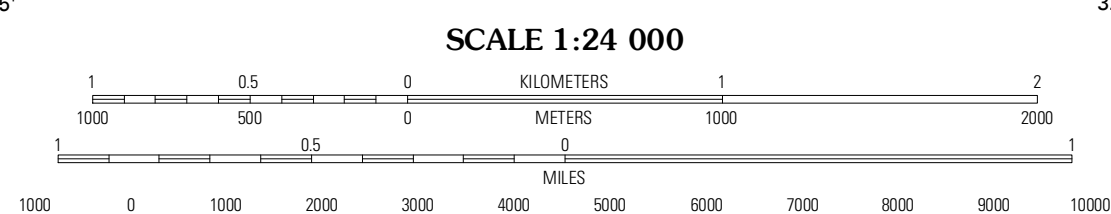


Produced by the United States Geological Survey  
North American Datum of 1983 (NAD83)  
World Geodetic System of 1984 (WGS84) Projection and  
1 000-meter grid: Universal Transverse Mercator, Zone 14S  
10 000-foot ticks: Kansas Coordinate System of 1983 (north  
zone)

Imagery.....NAIP, July 2010  
Roads.....©2006-2011 TomTom  
Names.....GNIS, 2012  
Hydrography.....National Hydrography Dataset, 2010  
Contours.....National Elevation Dataset, 2012  
Boundaries.....Census, BWC, B.C., USGS, 1972 - 2012

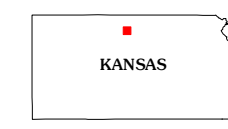
UTM GRID AND 2012 MAGNETIC NORTH  
DECLINATION AT CENTER OF SHEET

U.S. National Grid
100 000-m Square ID
NJ
Grid Zone Designation
14S



CONTOUR INTERVAL 10 FEET  
NORTH AMERICAN VERTICAL DATUM OF 1988

This map was produced to conform with the  
National Geospatial Program US Topo Product Standard, 2011.  
A metadata file associated with this product is draft version 0.6.4



QUADRANGLE LOCATION

Portis NW	Portis NE	Cawker City NW
Portis	Downs North	Cawker City
Osborne	Downs South	Mill Creek

**ROAD CLASSIFICATION**

- Interstate Route (thick red line)
- US Route (red line)
- Ramp (red line with blue triangle)
- State Route (thin red line)
- Local Road (grey line)
- 4WD (dashed grey line)

DOWNNS NORTH, KS  
2012

ADJOINING 7.5' QUADRANGLES