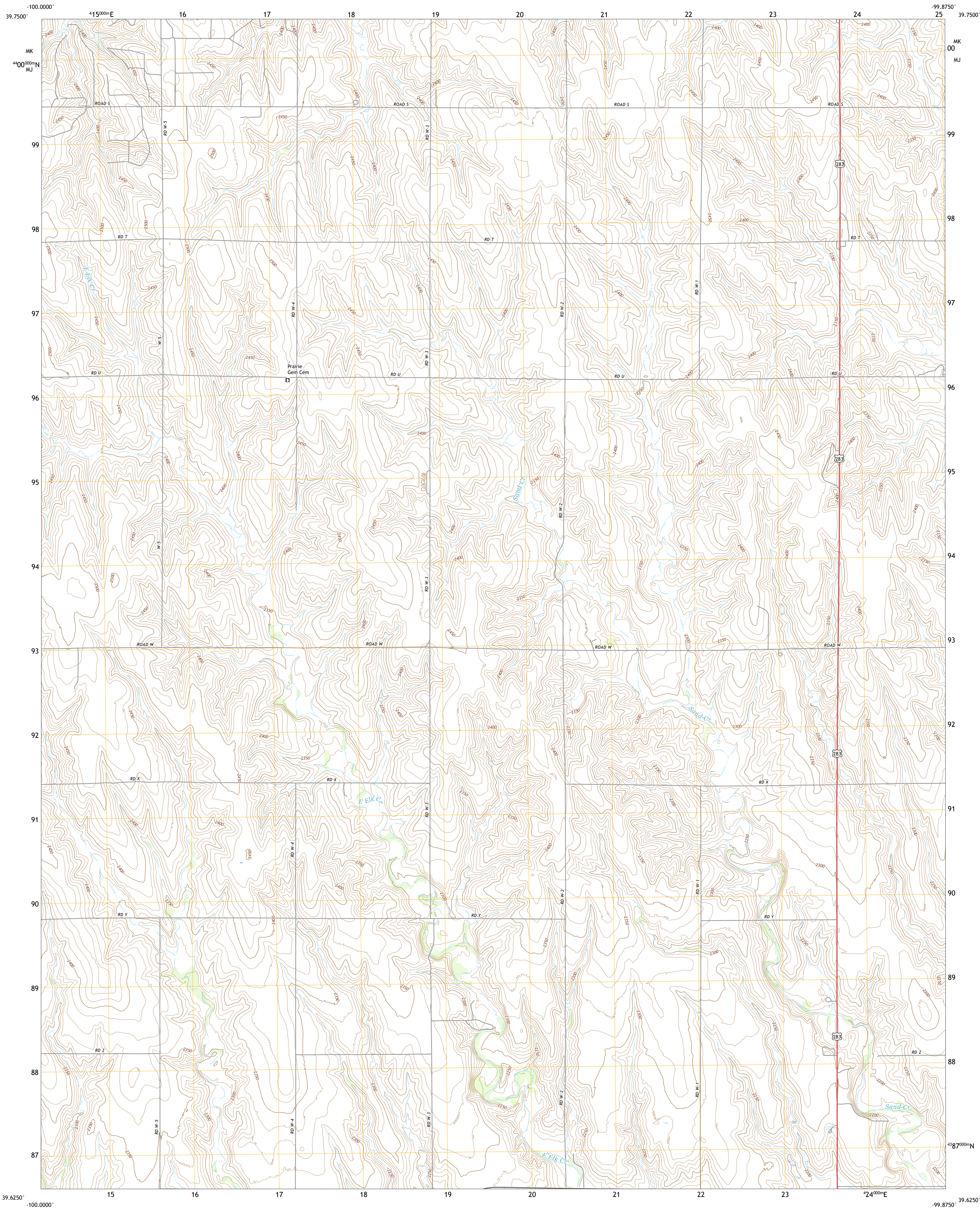




U.S. DEPARTMENT OF THE INTERIOR
U.S. GEOLOGICAL SURVEY



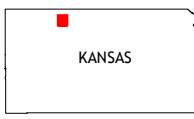
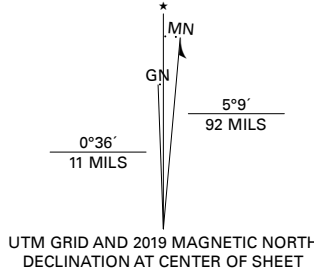
EDMOND NW QUADRANGLE
KANSAS - NORTON COUNTY
7.5-MINUTE SERIES



Produced by the United States Geological Survey

North American Datum of 1983 (NAD83)
World Geodetic System of 1984 (WGS84). Projection and
1 000-meter grid/Universal Transverse Mercator, Zone 14S
This map is not a legal document. Boundaries may be
generalized for this map scale. Private lands within government
reservations may not be shown. Obtain permission before
entering private lands.

Imagery.....NAIP, August 2017 - September 2017
Roads.....U.S. Census Bureau, 2018
Names.....GNIS, 1978 - 2016
Hydrography.....National Hydrography Dataset, 2005 - 2018
Contours.....National Elevation Dataset, 2017
Boundaries.....Multiple sources; see metadata file, 2016 - 2017
Public Land Survey System.....BLM, 2016
Wetlands.....FWS National Wetlands Inventory, 1985



QUADRANGLE LOCATION

1	2	3
4	5	6
7	8	9

1 Reager
2 Norton
3 Calvert
4 Clayton NE
5 Edmond
6 Lenora West
7 Lenora East
8 Edmond SE

ROAD CLASSIFICATION
Expressway
Secondary Hwy
Ramp
Interstate Route
Local Connector
Local Road
4WD
US Route
State Route

CONTOUR INTERVAL 10 FEET
NORTH AMERICAN VERTICAL DATUM OF 1988
This map was produced to conform with the
National Geospatial Program US Topo Product Standard, 2011.
A metadata file associated with this product is draft version 0.6.18

EDMOND NW, KS
2018

