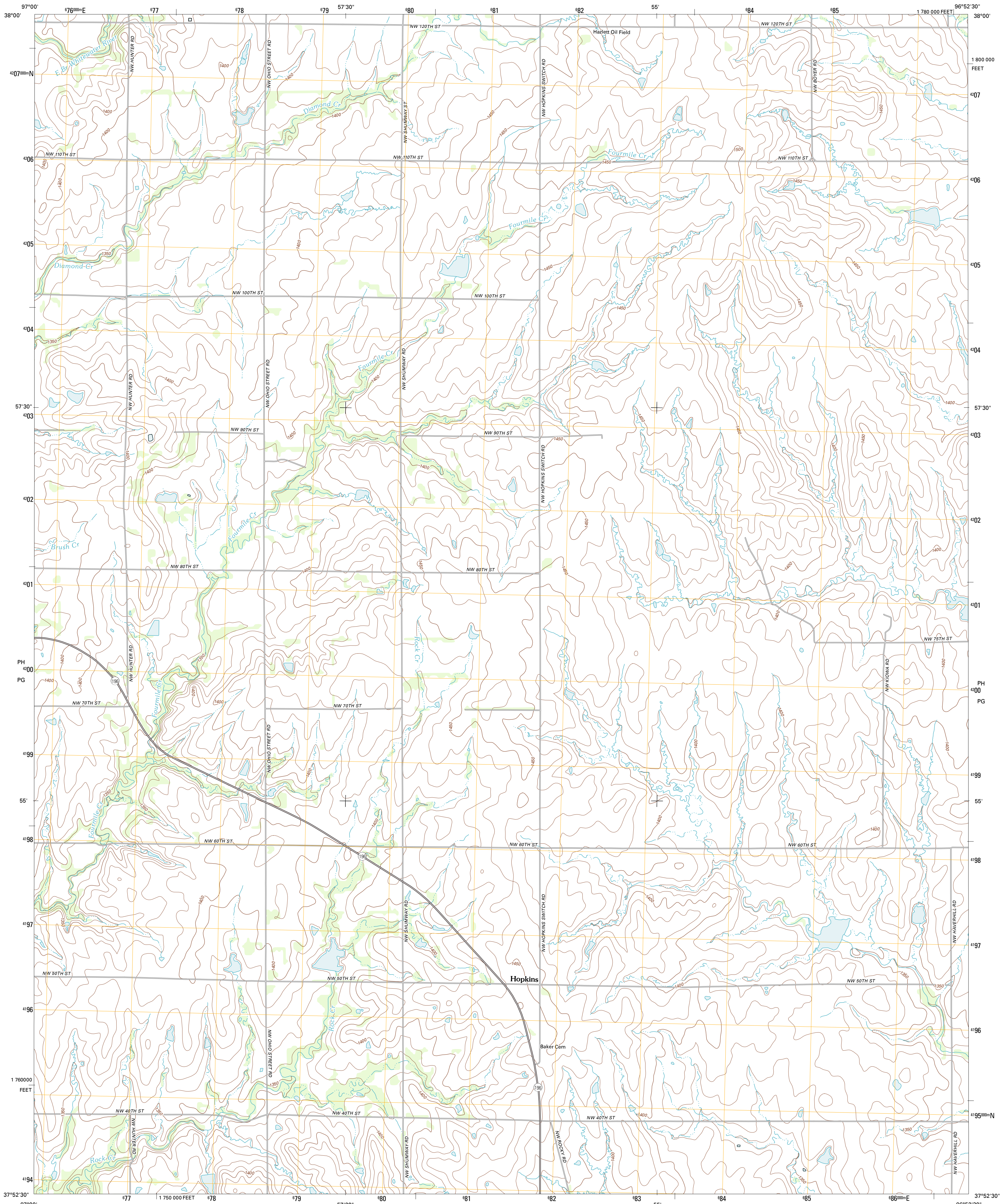




U.S. DEPARTMENT OF THE INTERIOR
U. S. GEOLOGICAL SURVEY

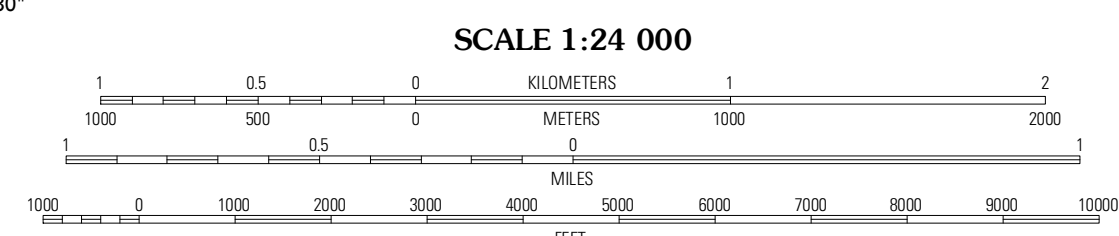
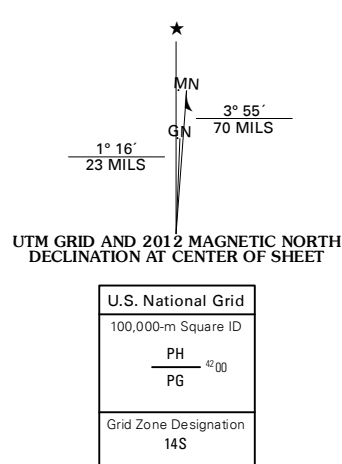


EL DORADO NW QUADRANGLE
KANSAS-BUTLER CO.
7.5-MINUTE SERIES

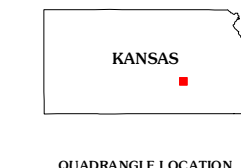


Produced by the United States Geological Survey
North American Datum of 1983 (NAD83)
World Geodetic System of 1984 (WGS84). Projection and
1 000-meter grid: Universal Transverse Mercator, Zone 14S
10 000-foot ticks: Kansas Coordinate System of 1983 (south zone)

Imagery: NIP, June 2010
Roads: ©2006-2011 TomTom
Names: GNS, 2012
Hydrography: National Hydrography Dataset, 2010
Contours: National Elevation Dataset, 2006
Boundaries: Census, IBWC, IBC, USGS, 1972 - 2012



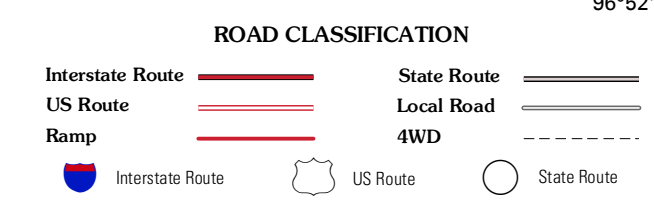
CONTOUR INTERVAL 10 FEET
NORTH AMERICAN VERTICAL DATUM OF 1988
This map was produced to conform with the National Geospatial Program US Topo Product Standard, 2011. A metadata file associated with this product is draft version 0.6.4



QUADRANGLE LOCATION

Peabody SE	Burns	Florence SE
Potwin	El Dorado NW	De Graff
Benton	El Dorado SW	El Dorado

ADJOINING 7.5 QUADRANGLES



EL DORADO NW, KS
2012