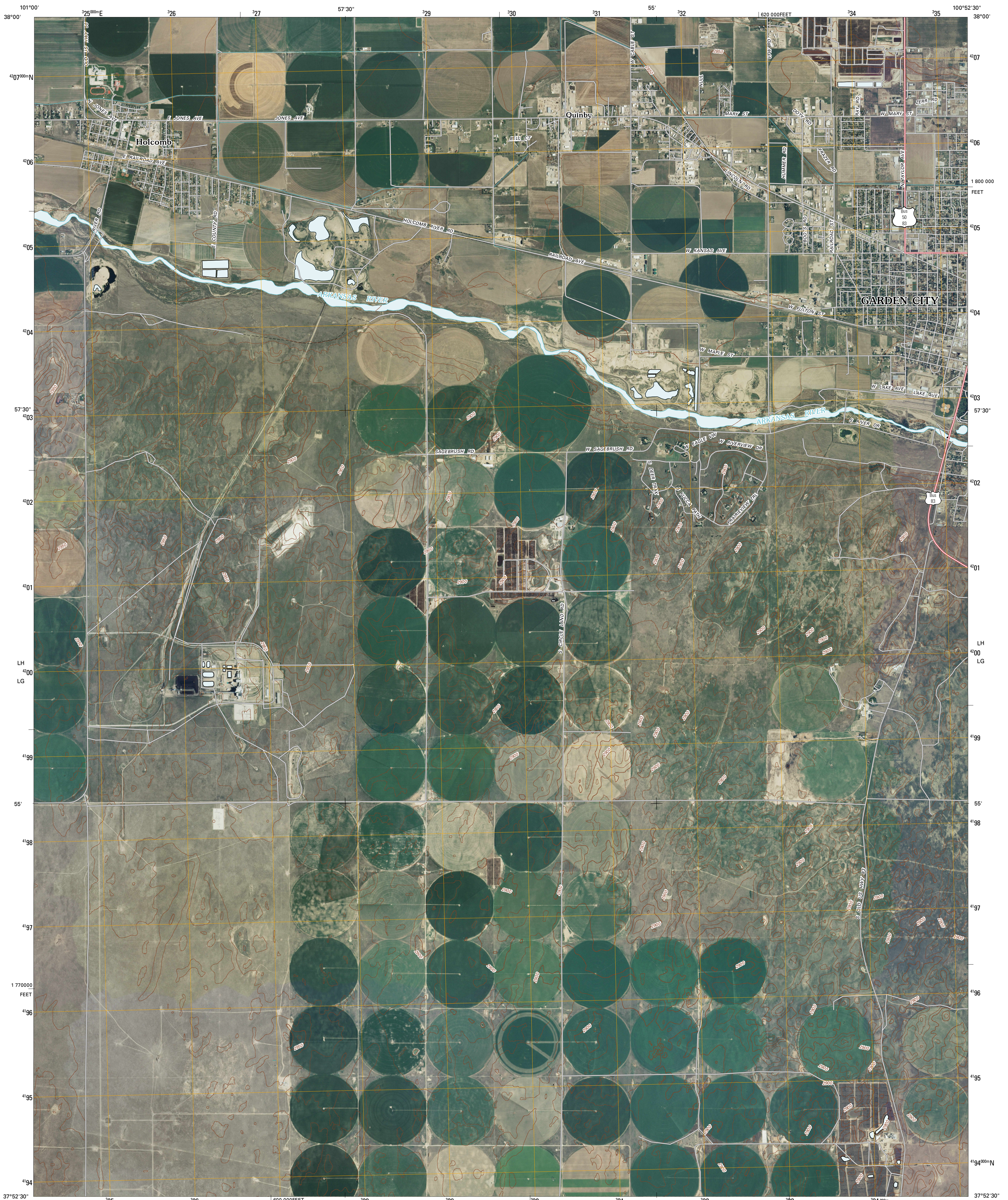




U.S. DEPARTMENT OF THE INTERIOR
U. S. GEOLOGICAL SURVEY

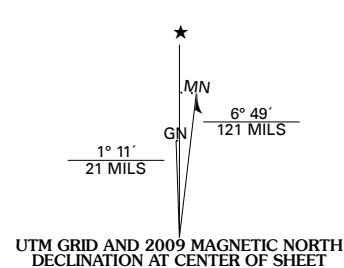


GARDEN CITY WEST QUADRANGLE
KANSAS
7.5-MINUTE SERIES

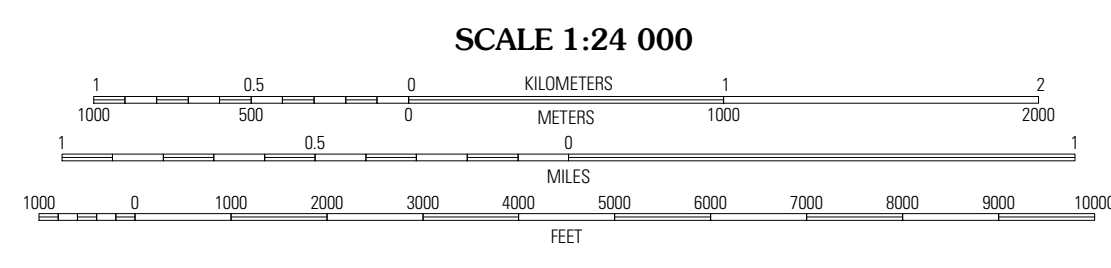


Produced by the United States Geological Survey
North American Datum of 1983 (NAD83)
World Geodetic System of 1984 (WGS84). Projection and
1 000-meter grid: Universal Transverse Mercator, Zone 14S
10 000-foot ticks: Kansas Coordinate System of 1983
(south zone)

Imagery.....N.A.I.P., July 2008
Roads.....National Transportation Dataset, 2004
Names.....GNIS, 2008
Hydrography.....National Hydrography Dataset, 2008
Contours.....National Elevation Dataset, 2006

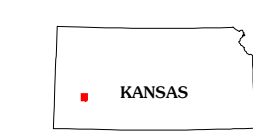


U.S. National Grid	
100,000m Square ID	
LH	00
LG	00
Grid Zone Designation	14S



CONTOUR INTERVAL 10 FEET

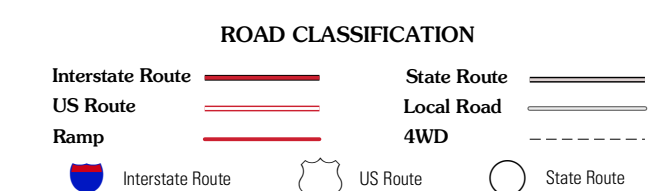
This map was produced to conform with version 0.5.10 of the
draft USGS Standards for 7.5-Minute Quadrangle Maps.
A metadata file associated with this product is also draft version 0.5.10



QUADRANGLE LOCATION

Wolf	Low	White Worms Bottoms
Deerfield NE	Garden City West	Garden City East
Deerfield SE	Garden City SW	Plymell

ADJOINING 7.5' QUADRANGLES



GARDEN CITY WEST, KS
2009