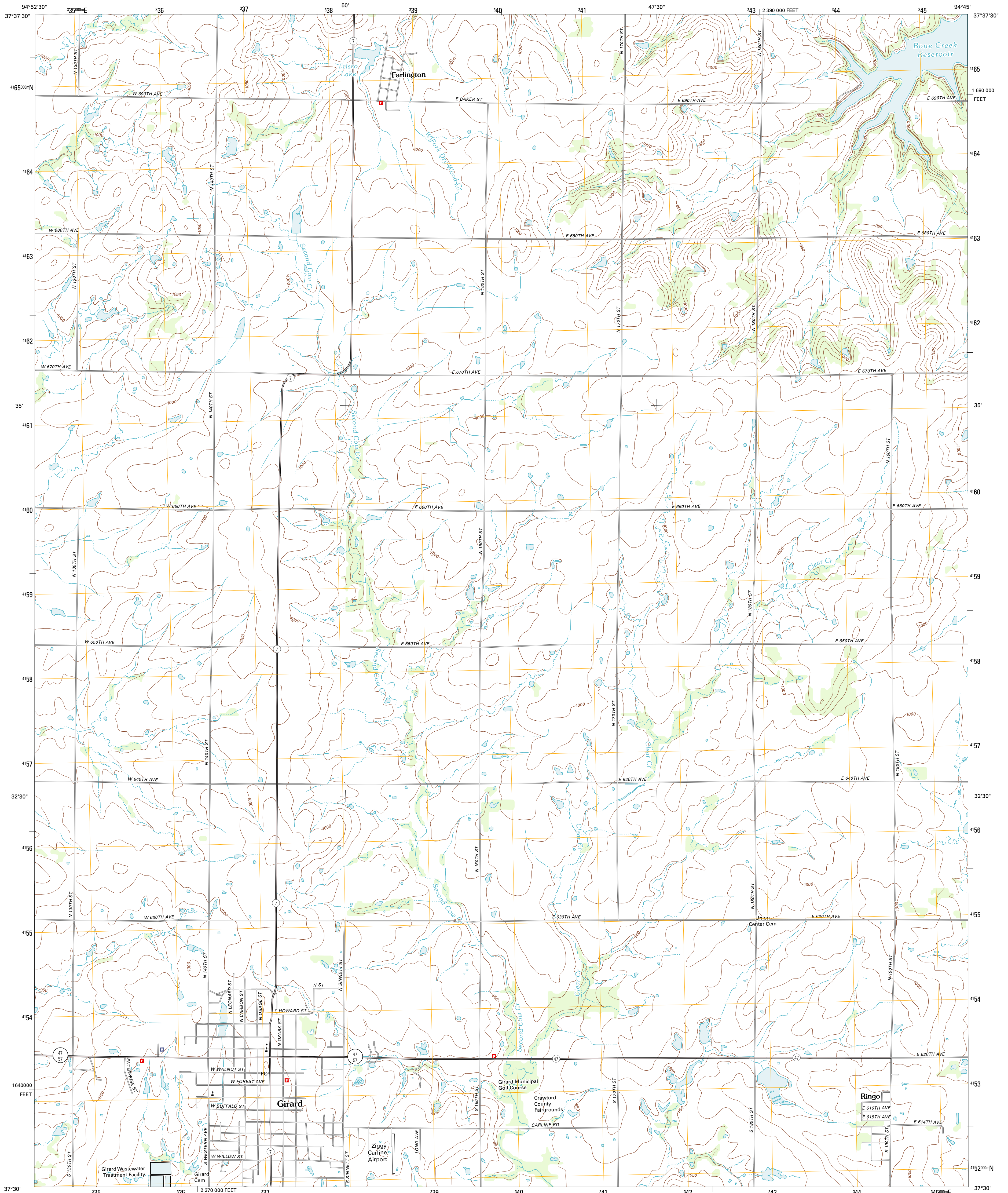




U.S. DEPARTMENT OF THE INTERIOR
U. S. GEOLOGICAL SURVEY



GIRARD QUADRANGLE
KANSAS-CRAWFORD CO.
7.5-MINUTE SERIES

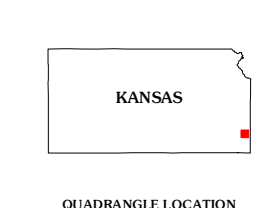
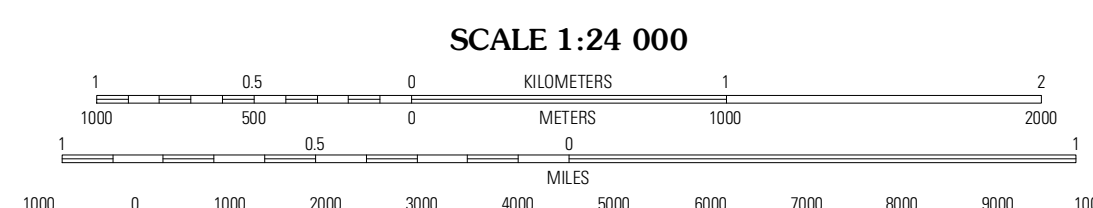


Produced by the United States Geological Survey
North American Datum of 1983 (NAD83)
World Geodetic System of 1984 (WGS84), Projection and
1 000-meter grid; Universal Transverse Mercator, Zone 15S
10 000-foot ticks; Kansas Coordinate System of 1983 (south
zone)

UTM GRID AND 2012 MAGNETIC NORTH
DECLINATION AT CENTER OF SHEET

11.6'
20 MILS

U.S. National Grid
100,000m Square ID
UB
Grid Zone Designation
15S



ROAD CLASSIFICATION

Interstate Route (thick red line)
US Route (red line)
Ramp (red line with blue triangle)
State Route (thin red line)
Local Road (grey line)
4WD (dashed grey line)
US Route (circle with number)
State Route (circle with number)

QUADRANGLE LOCATION

Hepler	Huettville	Cato
Braxton	Girard	Arma
Grindstone Creek	Radley	Pittsburg

CONTOUR INTERVAL 10 FEET
NORTH AMERICAN VERTICAL DATUM OF 1988

This map was produced to conform with the
National Geospatial Program US Topo Product Standard, 2011.
A metadata file associated with this product is draft version 0.6.4

GIRARD, KS
2012

ADJOINING 7.5 QUADRANGLES