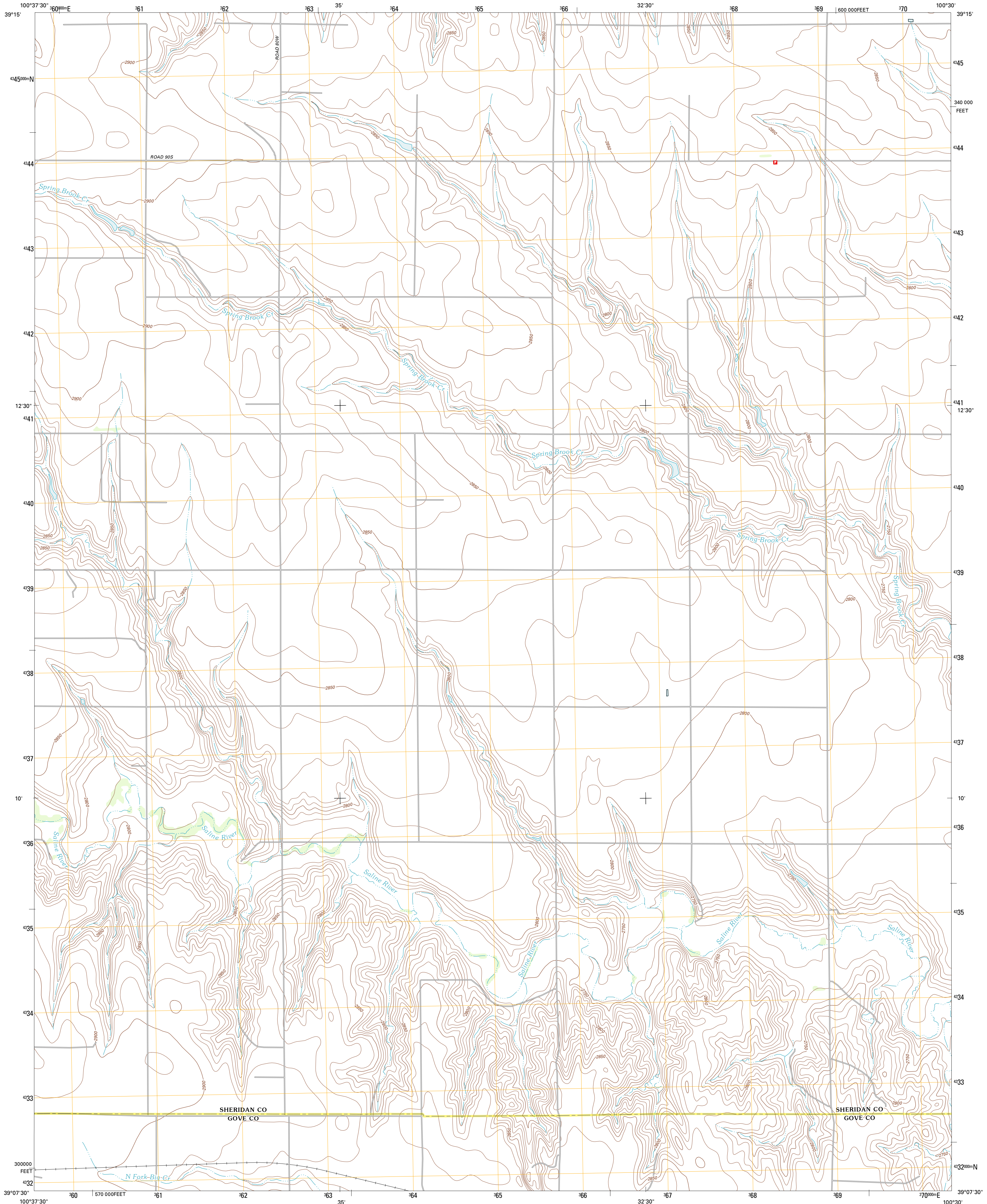




U.S. DEPARTMENT OF THE INTERIOR  
U. S. GEOLOGICAL SURVEY

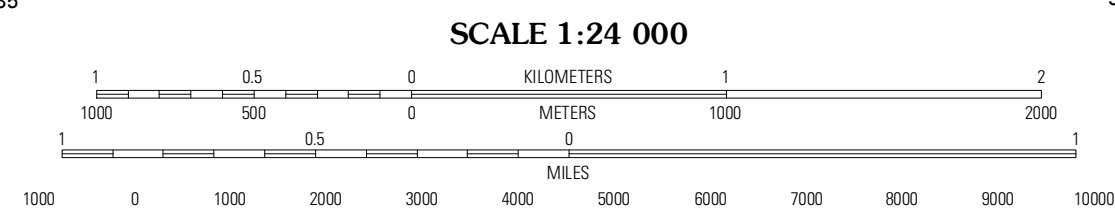
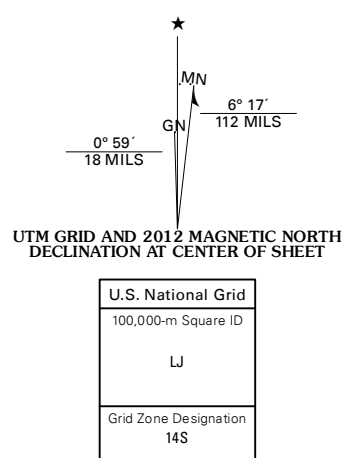


GRINNELL NE QUADRANGLE  
KANSAS  
7.5-MINUTE SERIES



Produced by the United States Geological Survey  
North American Datum of 1983 (NAD83)  
World Geodetic System of 1984 (WGS84). Projection and  
1 000-meter grid: Universal Transverse Mercator, Zone 14S  
10 000-foot ticks: Kansas Coordinate System of 1983 (north  
zone)

Imagery:.....NAIP, July 2010 - August 2010  
Roads:.....©2006-2011 TomTom  
Names:.....GNIS, 2012  
Hydrography:.....National Hydrography Dataset, 2010  
Contours:.....National Elevation Dataset, 2012  
Boundaries:.....Census, IBWC, B.C., USGS, 1972 - 2012



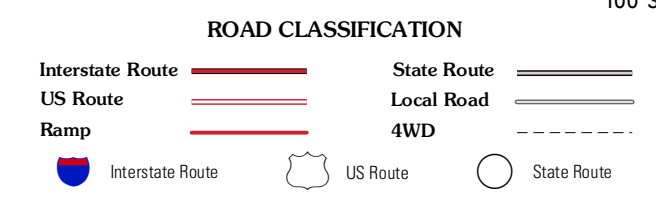
CONTOUR INTERVAL 10 FEET  
NORTH AMERICAN VERTICAL DATUM OF 1988

This map was produced to conform with the  
National Geospatial Program US Topo Product Standard, 2011.  
A metadata file associated with this product is draft version 0.6.4



QUADRANGLE LOCATION

Menlo	Sequin	Hoxie
Grinnell North	Grinnell NE	Midway
Grinnell South	Sunny Slope Lake	Grainfield



GRINNELL NE, KS  
2012

ADJOINING 7.5' QUADRANGLES