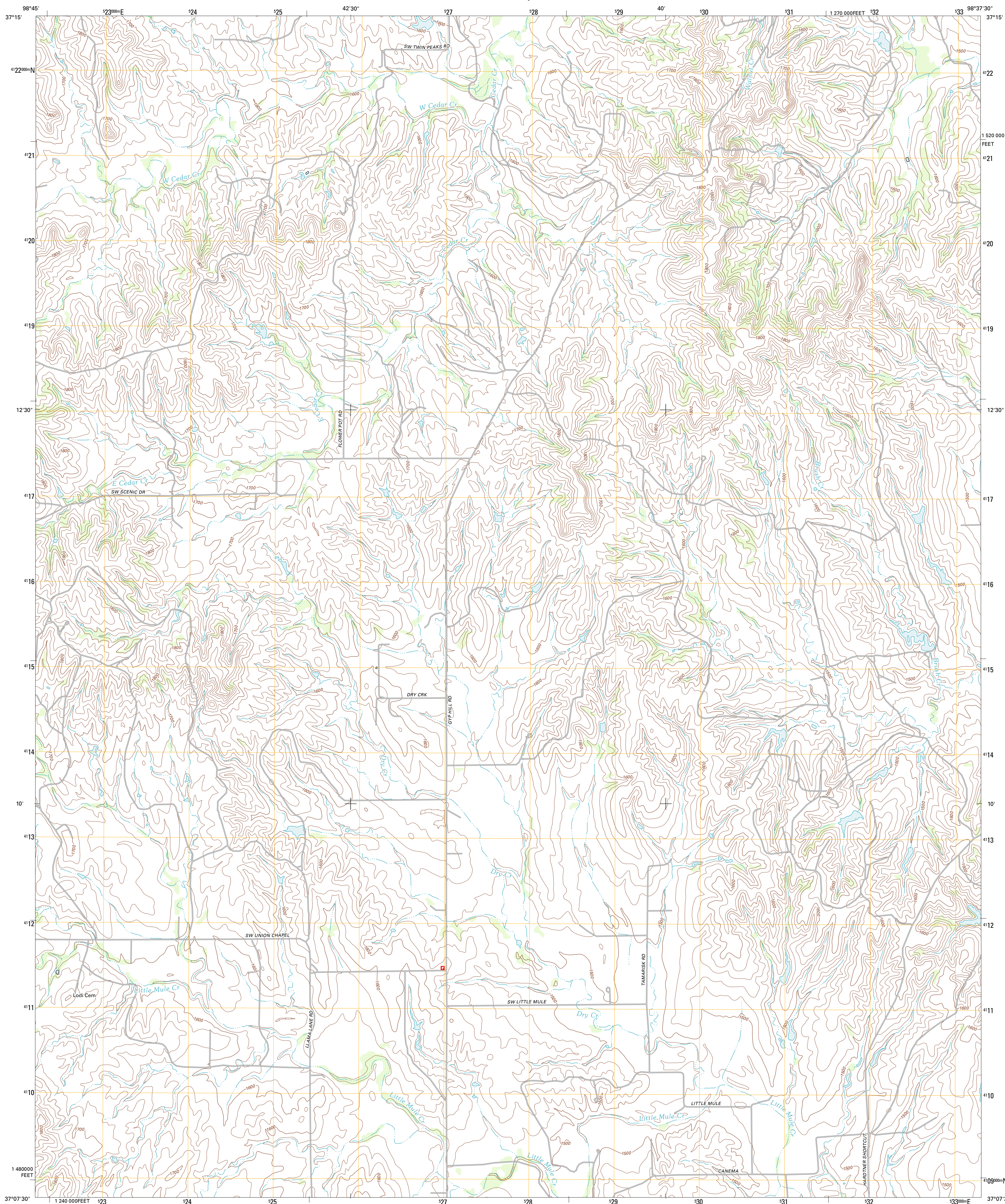




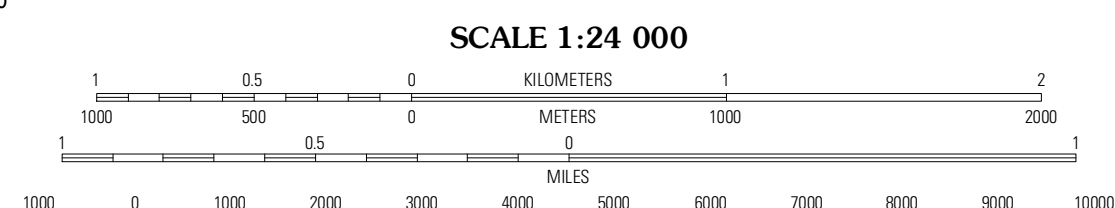
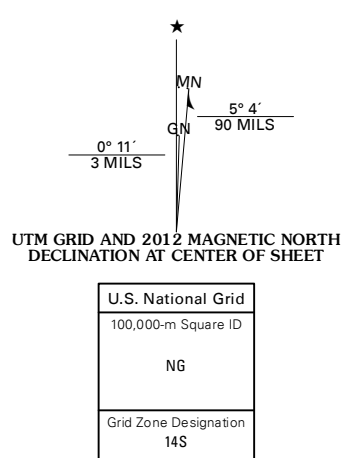
U.S. DEPARTMENT OF THE INTERIOR
U. S. GEOLOGICAL SURVEY



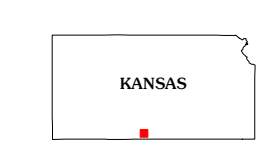
HARDTNER NW QUADRANGLE
KANSAS-BARBER CO.
7.5-MINUTE SERIES



Produced by the United States Geological Survey
North American Datum of 1983 (NAD83)
World Geodetic System of 1984 (WGS84). Projection and
1 000-meter grid: Universal Transverse Mercator, Zone 14S
10 000-foot ticks: Kansas Coordinate System of 1983 (south zone)

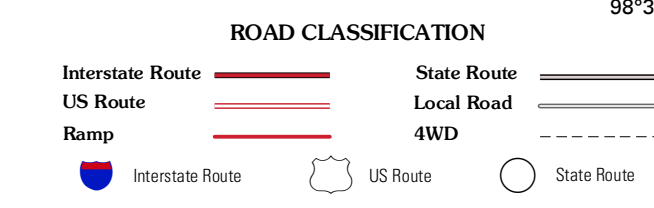


CONTOUR INTERVAL 20 FEET
NORTH AMERICAN VERTICAL DATUM OF 1988
This map was produced to conform with the
National Geospatial Program US Topo Product Standard, 2011.
A metadata file associated with this product is draft version 0.6.4



QUADRANGLE LOCATION

| | | |
|-----------------|-------------------|----------------|
| Lake City | Medicine Lodge SW | Medicine Lodge |
| Pump Creek | Hardtner NW | Gerlane |
| Hackberry Creek | Hardtner | Stubs |



HARDTNER NW, KS
2012

ADJOINING 7.5 QUADRANGLES