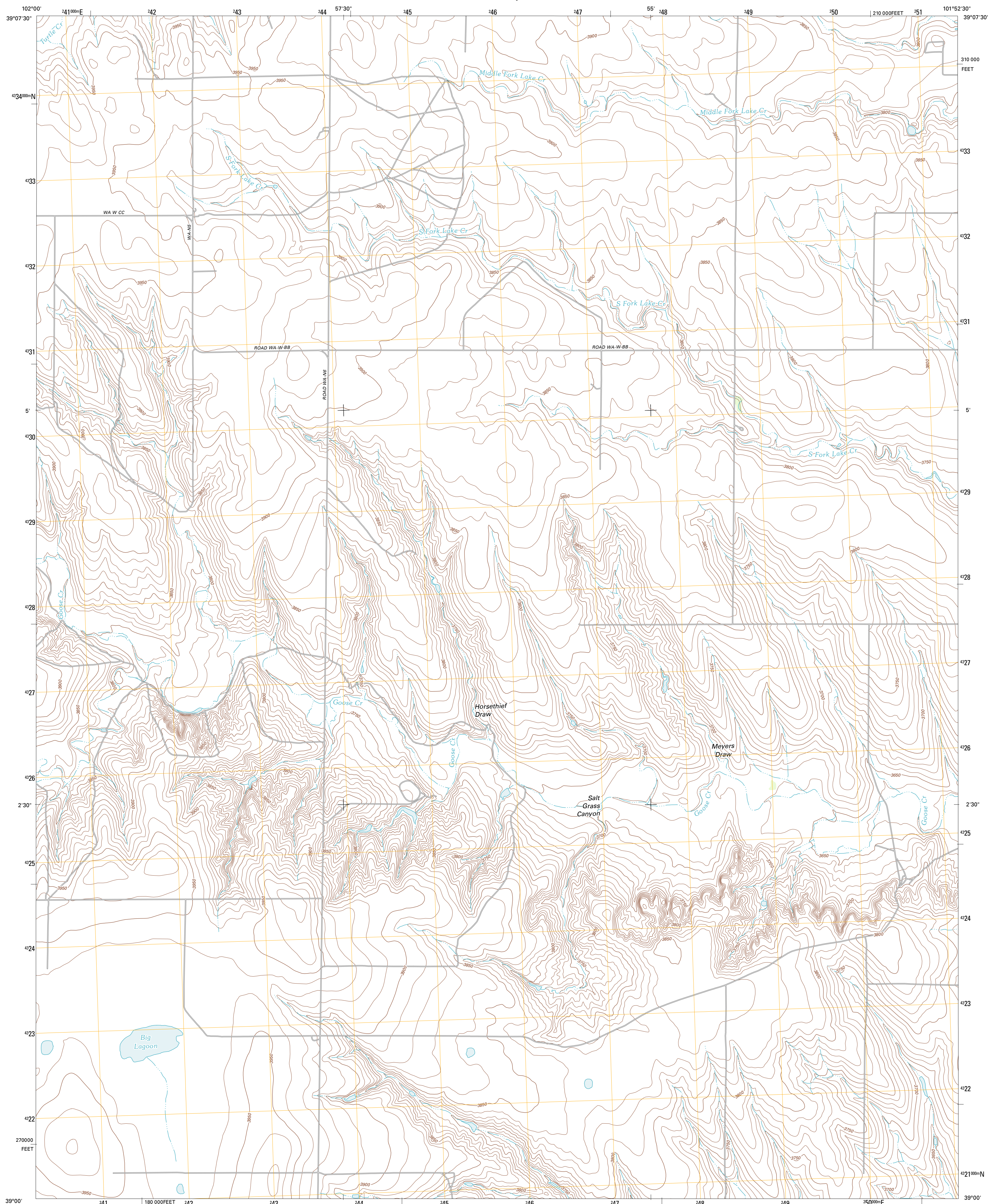




U.S. DEPARTMENT OF THE INTERIOR
U. S. GEOLOGICAL SURVEY

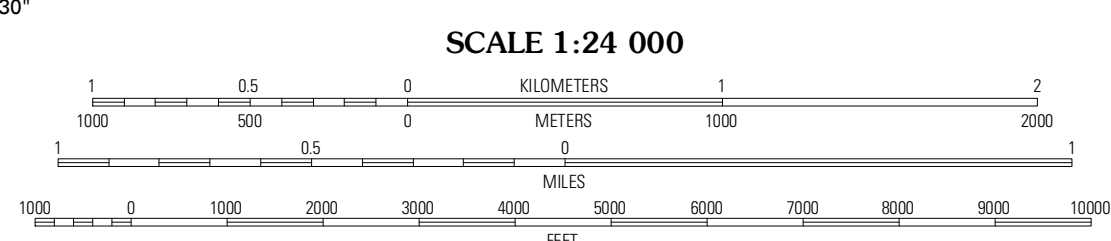
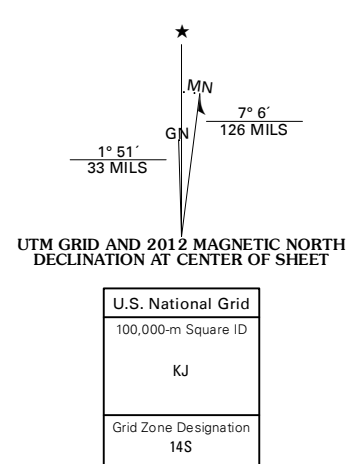


HORSETHIEF DRAW QUADRANGLE
KANSAS-WALLACE CO.
7.5-MINUTE SERIES



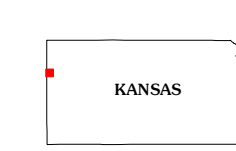
Produced by the United States Geological Survey
North American Datum of 1983 (NAD83)
World Geodetic System of 1984 (WGS84). Projection and
1 000-meter grid: Universal Transverse Mercator, Zone 14S
10 000-foot ticks: Kansas Coordinate System of 1983 (north
zone)

Imagery.....NAP, July 2010
Roads.....©2006-2011, TomTom
Names.....GNIS, 2012
Hydrography.....National Hydrography Dataset, 2010
Contours.....National Elevation Dataset, 2012
Boundaries.....Census, IBWC, IBG, USGS, 1972 - 2012



SCALE 1:24 000
CONTOUR INTERVAL 10 FEET
NORTH AMERICAN VERTICAL DATUM OF 1988

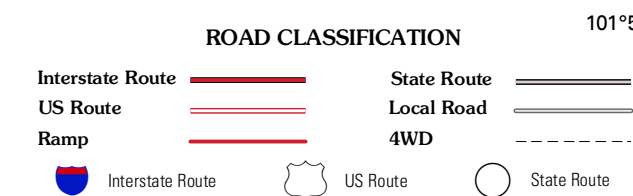
This map was produced to conform with the
National Geospatial Program US Topo Product Standard, 2011.
A metadata file associated with this product is draft version 0.6.4



QUADRANGLE LOCATION

Mount Sunflower NE	Horsethief Draw NW	Horsethief Draw NE
Mount Sunflower	Horsethief Draw	Horsethief Draw SE
Arapahoe NE	Weskan NW	Sharon Springs West

ADJOINING 7.5 QUADRANGLES



HORSETHIEF DRAW, KS
2012