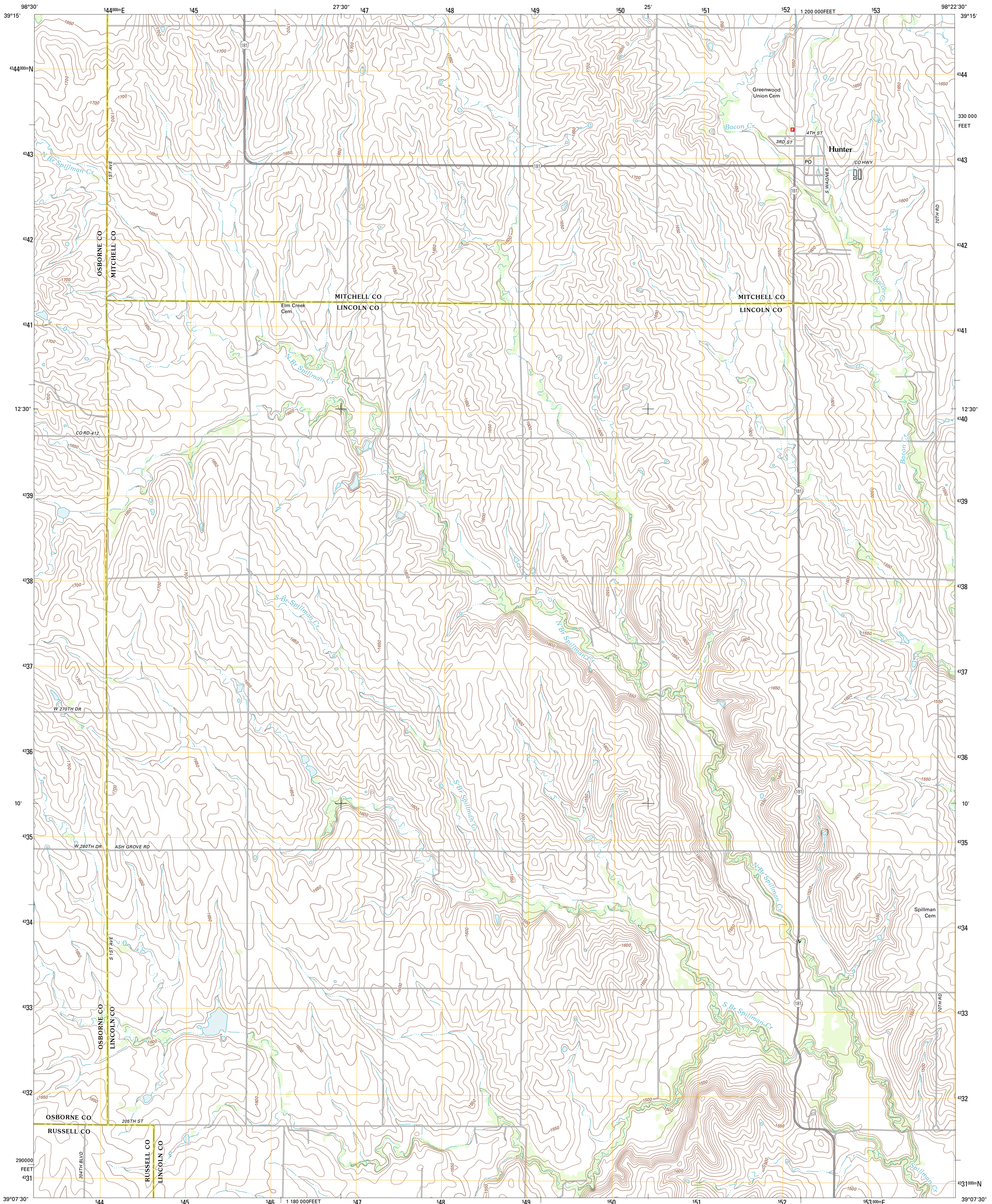




U.S. DEPARTMENT OF THE INTERIOR  
U. S. GEOLOGICAL SURVEY

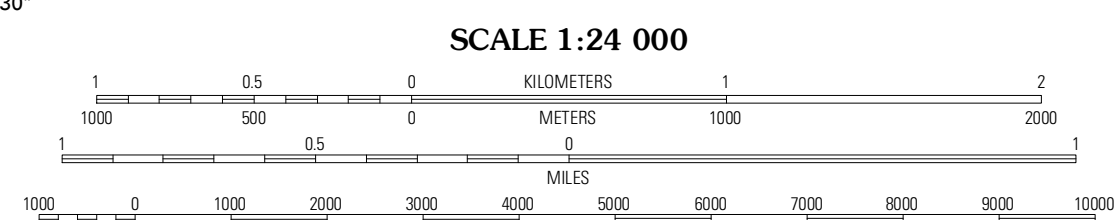
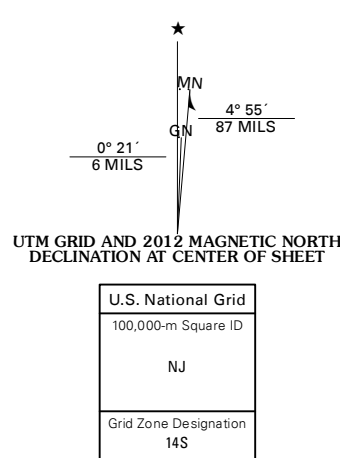


HUNTER QUADRANGLE  
KANSAS  
7.5-MINUTE SERIES

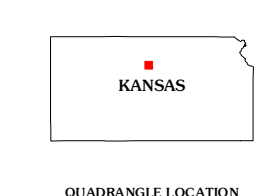


Produced by the United States Geological Survey  
North American Datum of 1983 (NAD83)  
World Geodetic System of 1984 (WGS84). Projection and  
1 000-meter grid: Universal Transverse Mercator, Zone 14S  
10 000-foot ticks: Kansas Coordinate System of 1983 (north  
zone)

Imagery: N.A.I.P., July 2010  
Roads: ©2006-2011 TomTom  
Names: GNS, 2012  
Hydrography: National Hydrography Dataset, 2010  
Contours: National Elevation Dataset, 2005  
Boundaries: Census, IBWC, IBC, USGS, 1972 - 2012



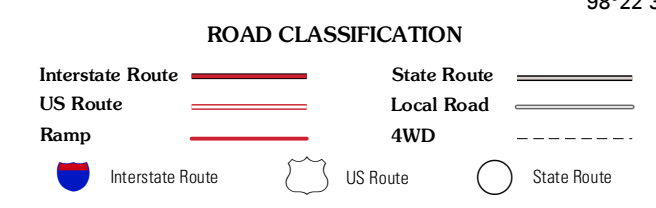
CONTOUR INTERVAL 10 FEET  
NORTH AMERICAN VERTICAL DATUM OF 1988  
This map was produced to conform with the  
National Geospatial Program US Topo Product Standard, 2011.  
A metadata file associated with this product is draft version 0.6.4



QUADRANGLE LOCATION

Osborne SE	Tipton	Blue Hill
Meades Ranch	Hunter	Ash Grove
Lucas	Sylvan Grove	Vesper

ADJOINING 7.5' QUADRANGLES



HUNTER, KS  
2012