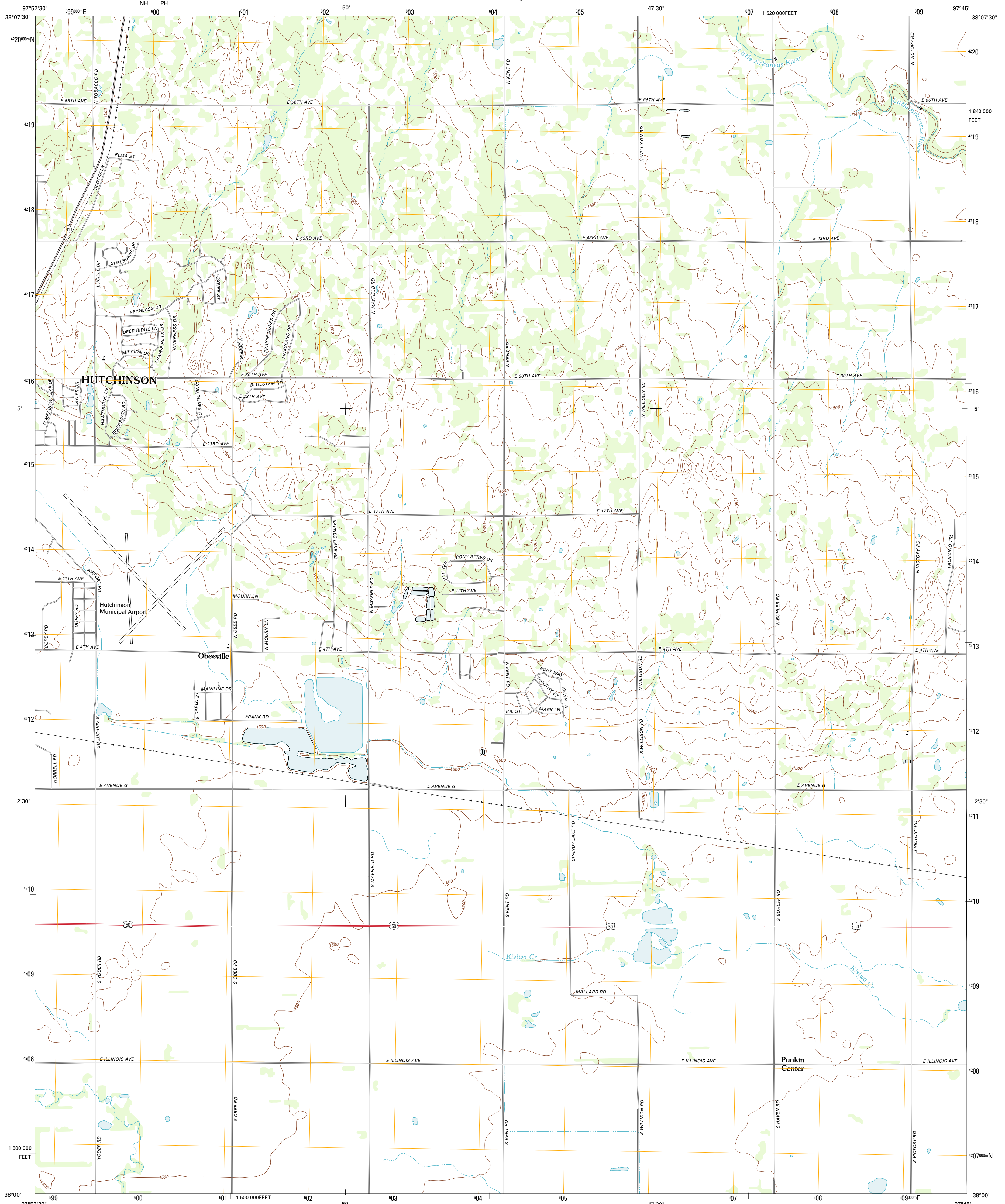




U.S. DEPARTMENT OF THE INTERIOR
U. S. GEOLOGICAL SURVEY

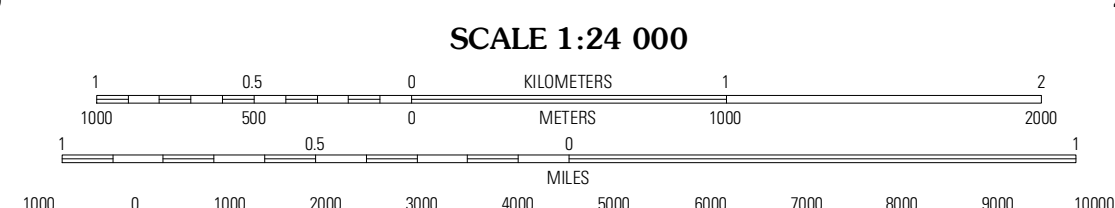
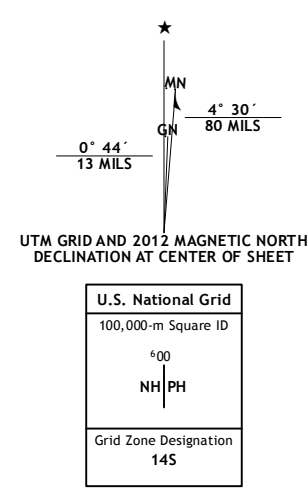


HUTCHINSON SE QUADRANGLE
KANSAS-RENO CO.
7.5-MINUTE SERIES

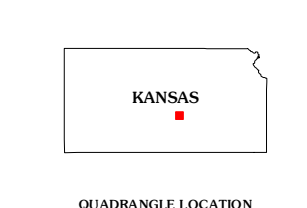


Produced by the United States Geological Survey
North American Datum of 1983 (NAD83)
World Geodetic System of 1984 (WGS84) Projection and
1 000-meter grid: Universal Transverse Mercator, Zone 14S
10 000-foot ticks: Kansas Coordinate System of 1983 (south zone)

Imagery: NADIP, July 2010
Roads: ©2006-2011 TomTom
Names: GNS, 2012
Hydrography: National Hydrography Dataset, 2010
Contours: National Elevation Dataset, 2005
Boundaries: Census, IBWC, IBC, USGS, 1972-2012

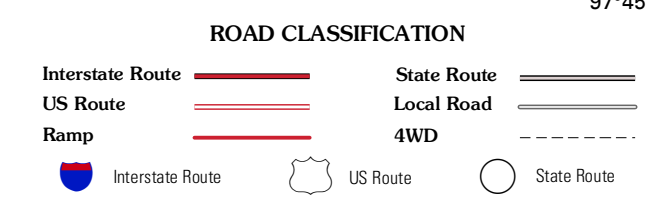


CONTOUR INTERVAL 10 FEET
NORTH AMERICAN VERTICAL DATUM OF 1988
This map was produced to conform with the
National Geospatial Program US Topo Product Standard, 2011.
A metadata file associated with this product is draft version 0.6.4



QUADRANGLE LOCATION

Hutchinson NW	Buher	Halstead NW
Hutchinson SE	Hutchinson SE	Burton
Elmer	Haven	Patterson



HUTCHINSON SE, KS
2012

ADJOINING 7.5' QUADRANGLES