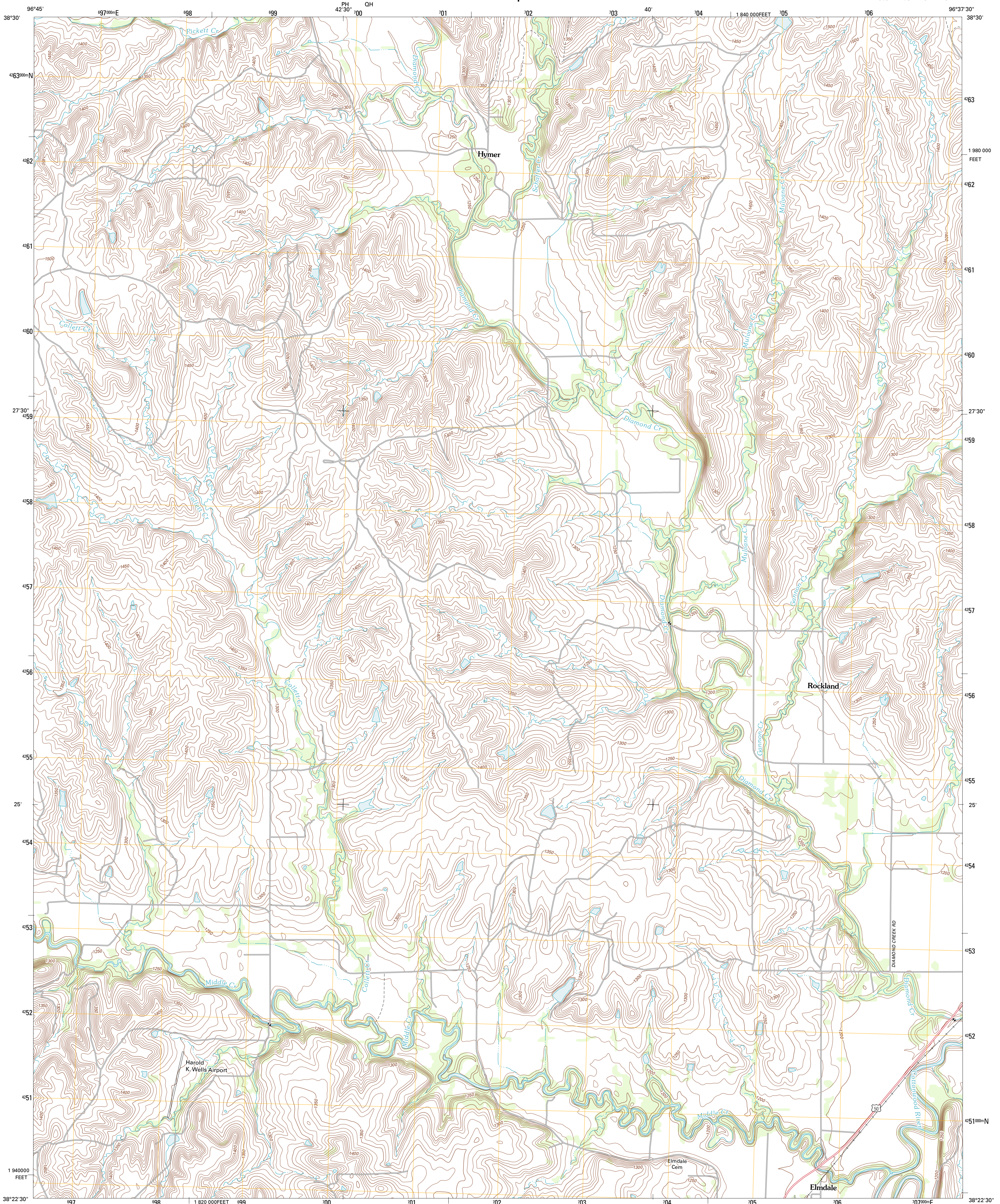




U.S. DEPARTMENT OF THE INTERIOR  
U. S. GEOLOGICAL SURVEY



HYMER QUADRANGLE  
KANSAS-CHASE CO.  
7.5-MINUTE SERIES

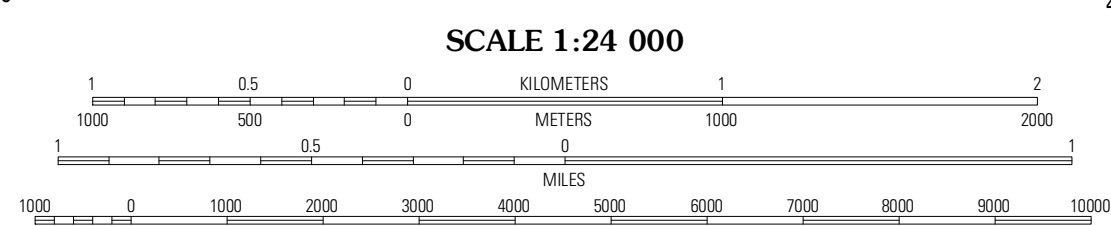


Produced by the United States Geological Survey  
North American Datum of 1983 (NAD83)  
World Geodetic System of 1984 (WGS84). Projection and  
1 000-meter grid: Universal Transverse Mercator, Zone 14S  
10 000-foot ticks: Kansas Coordinate System of 1983 (south  
zone)

Imagery.....NAIP, July 2010  
Roads.....©2006-2011 TomTom  
Names.....GNIS, 2012  
Hydrography.....National Hydrography Dataset, 2010  
Contours.....National Elevation Dataset, 2012  
Boundaries.....Census, BWC, IBC, USGS, 1972 - 2012

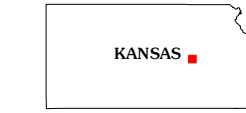
UTM GRID AND 2012 MAGNETIC NORTH  
DECLINATION AT CENTER OF SHEET

U.S. National Grid	17° 28'	28
100,000-m Square ID	PH	QH
Grid Zone Designation	14S	



CONTOUR INTERVAL 10 FEET  
NORTH AMERICAN VERTICAL DATUM OF 1988

This map was produced to conform with the  
National Geospatial Program US Topo Product Standard, 2011.  
A metadata file associated with this product is draft version 0.6.4



QUADRANGLE LOCATION

Burdick	Diamond Springs	Wilsey SE
Lincolnville NE	Hymer	Strong City
Cedar Point	Elmdale	Cottonwood Falls

ROAD CLASSIFICATION

- Interstate Route
- US Route
- Ramp
- State Road
- Local Road
- 4WD

HYMER, KS  
2012

ADJOINING 7.5 QUADRANGLES