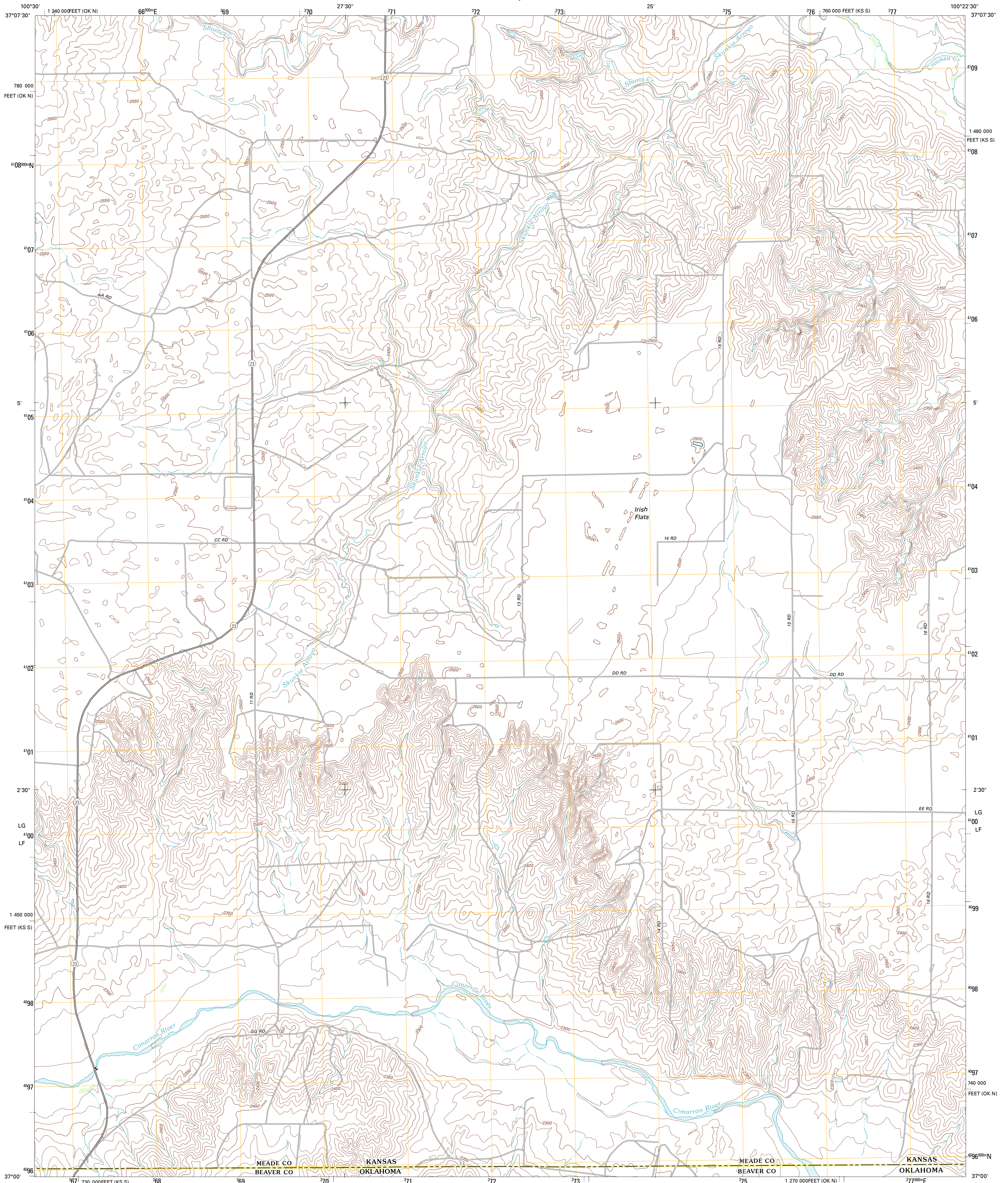




U.S. DEPARTMENT OF THE INTERIOR
U. S. GEOLOGICAL SURVEY

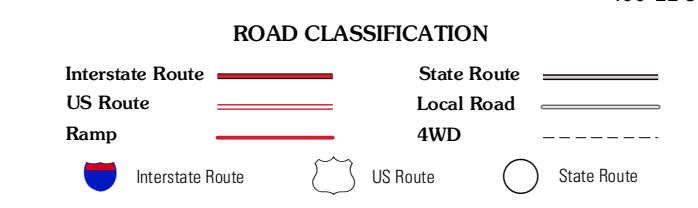
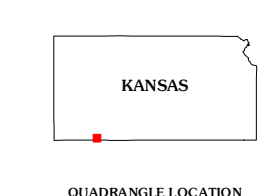
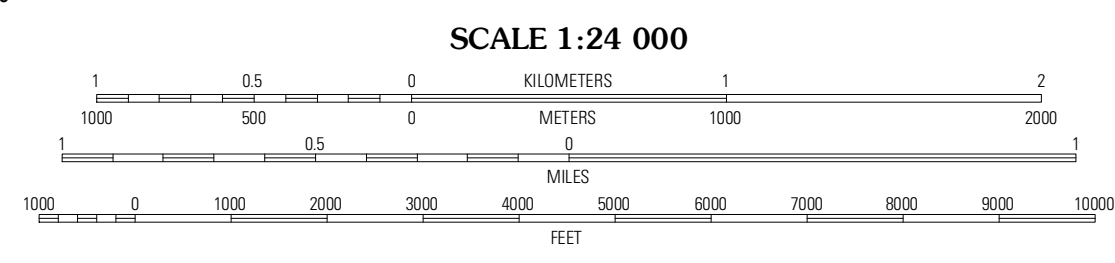
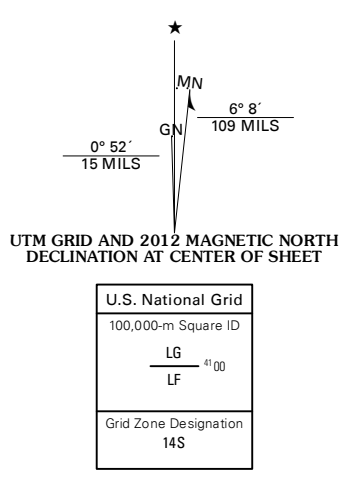


IRISH FLATS QUADRANGLE
KANSAS-OKLAHOMA
7.5-MINUTE SERIES



Produced by the United States Geological Survey
North American Datum of 1983 (NAD83)
World Geodetic System of 1984 (WGS84). Projection and
1 000-meter grid: Universal Transverse Mercator, Zone 14S
10 000-foot ticks: Kansas Coordinate System of 1983 (south
zone), Oklahoma Coordinate System of 1983 (north zone)

Imagery.....NAIP, July 2010
Roads.....©2006-2011 TomTom
Names.....GNIS, 2012
Hydrography.....National Hydrography Dataset, 2010
Contours.....National Elevation Dataset, 2012
Boundaries.....Census, BWC, IBC, USGS, 1972 - 2012



QUADRANGLE LOCATION

| | | |
|-----------|-------------|----------------|
| Kismet NE | Lake Meade | Irish Flats NE |
| Kismet SE | Irish Flats | Irish Flats SE |
| Forgas | Mocane NW | Mocane |

This map was produced to conform with the National Geospatial Program US Topo Product Standard, 2011. A metadata file associated with this product is draft version 0.6.4

IRISH FLATS, KS-OK
2012

ADJOINING 7.5' QUADRANGLES