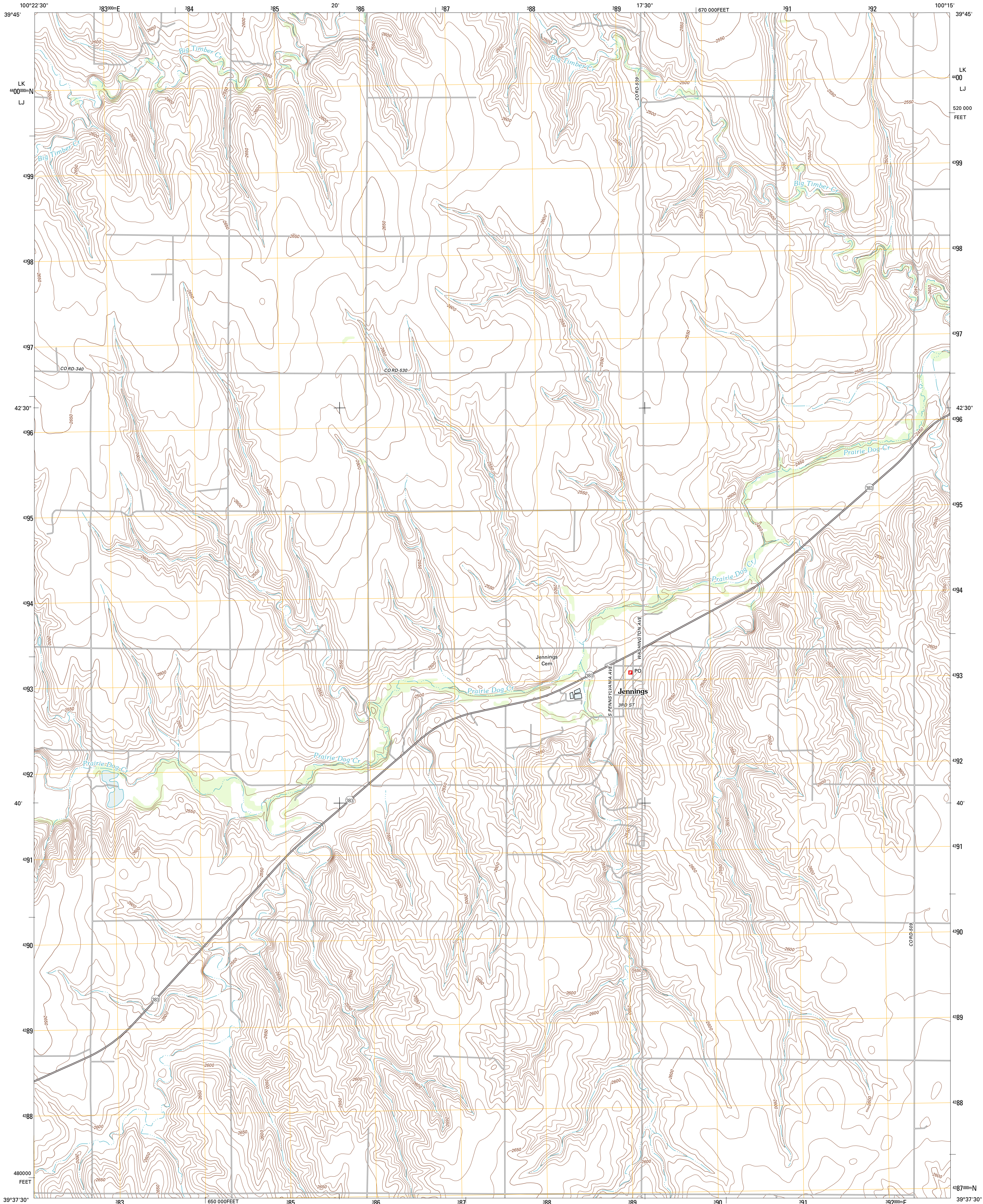




U.S. DEPARTMENT OF THE INTERIOR
U. S. GEOLOGICAL SURVEY

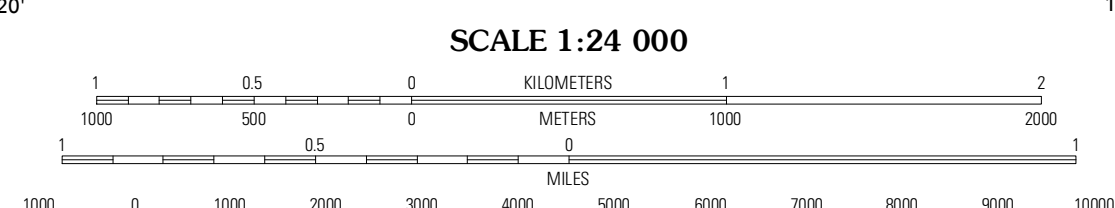
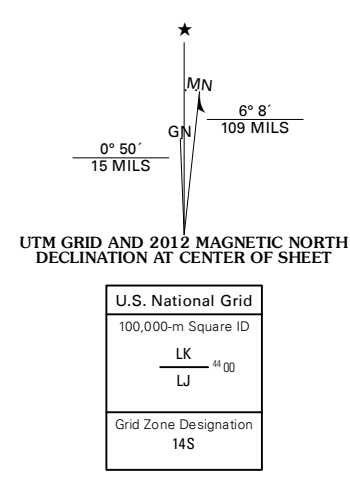


JENNINGS QUADRANGLE
KANSAS-DECATUR CO.
7.5-MINUTE SERIES

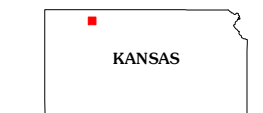


Produced by the United States Geological Survey
North American Datum of 1983 (NAD83)
World Geodetic System of 1984 (WGS84). Projection and
1 000-meter grid: Universal Transverse Mercator, Zone 14S
10 000-foot ticks: Kansas Coordinate System of 1983 (north
zone)

Imagery.....NAIP, July 2010
Roads.....©2006-2011 TomTom
Names.....GNIS, 2012
Hydrography.....National Hydrography Dataset, 2010
Contours.....National Elevation Dataset, 2012
Boundaries.....Census, IBWC, IBC, USGS, 1972 - 2012

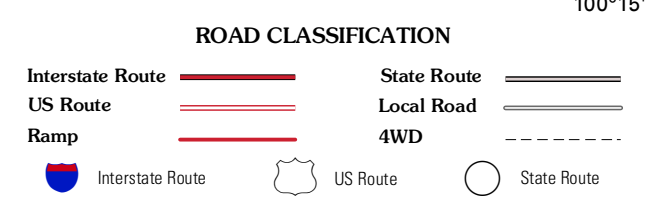


SCALE 1:24 000
CONTOUR INTERVAL 10 FEET
NORTH AMERICAN VERTICAL DATUM OF 1988
This map was produced to conform with the
National Geospatial Program US Topo Product Standard, 2011.
A metadata file associated with this product is draft version 0.6.4



QUADRANGLE LOCATION

Kanona	Kanona SE	Norcatar
Dresden North	Jennings	Clayton
Dresden South	Albion	Clayton SW



JENNINGS, KS
2012

ADJOINING 7.5' QUADRANGLES