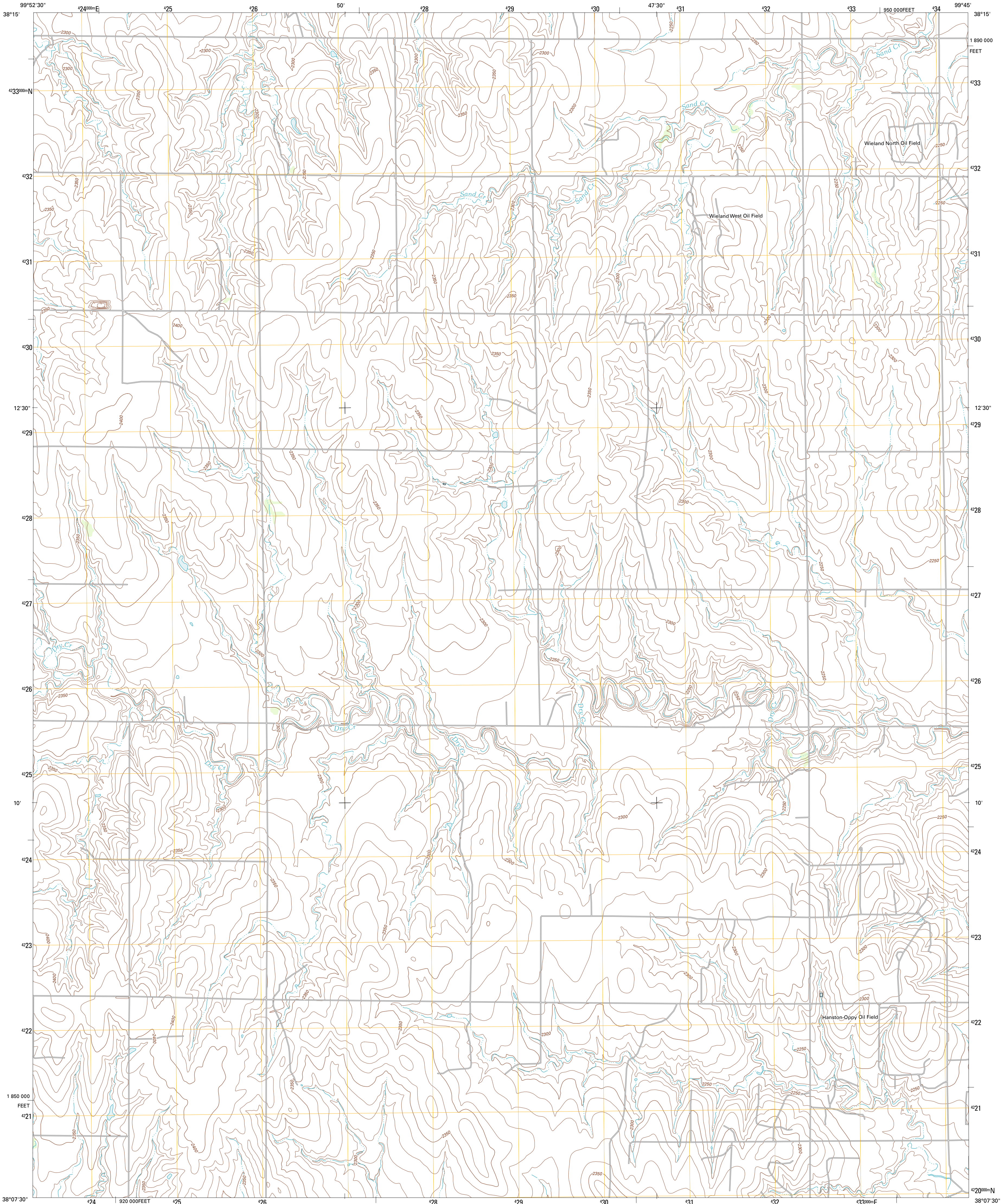




U.S. DEPARTMENT OF THE INTERIOR
U. S. GEOLOGICAL SURVEY



JETMORE NE QUADRANGLE
KANSAS-HODGEMAN CO.
7.5-MINUTE SERIES



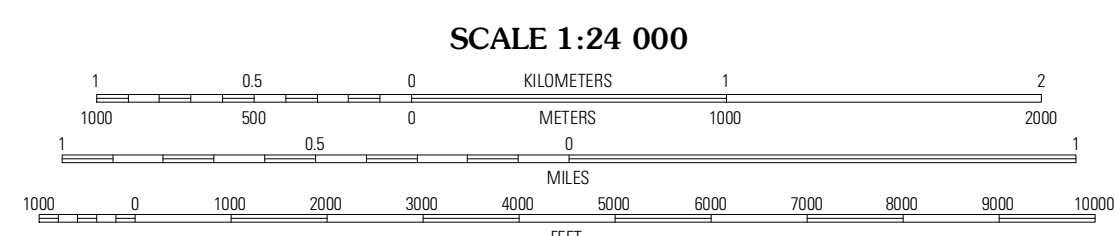
Produced by the United States Geological Survey
North American Datum of 1983 (NAD83)
World Geodetic System of 1984 (WGS84) Projection and
1 000-meter grid; Universal Transverse Mercator, Zone 14S
10 000-foot ticks: Kansas Coordinate System of 1983 (south zone)

Imagery.....NAP, July 2010
Roads.....©2006-2011 TomTom
Names.....GNIS, 2012
Hydrography.....National Hydrography Dataset, 2010
Contours.....National Elevation Dataset, 2006
Boundaries.....Census, BWC, BIC, USGS, 1972 - 2012

UTM GRID AND 2012 MAGNETIC NORTH DECLINATION AT CENTER OF SHEET

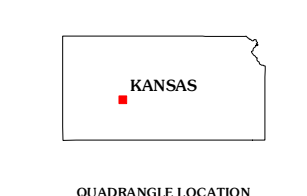
U.S. National Grid
100,000-m Square ID
MH
Grid Zone Designation
14S

8° 38' 10" N
103 MILES



CONTOUR INTERVAL 10 FEET
NORTH AMERICAN VERTICAL DATUM OF 1988

This map was produced to conform with the National Geospatial Program US Topo Product Standard, 2011. A metadata file associated with this product is draft version 0.6.4



QUADRANGLE LOCATION

Ness City SW	Ness City SE	Bazine SW
Jetmore NW	Jetmore NE	Hanston NW
Jetmore SE		Hanston

ADJOINING 7.5 QUADRANGLES

ROAD CLASSIFICATION

Interstate Route
US Route
Ramp

State Route
Local Road
4WD

JETMORE NE, KS
2012