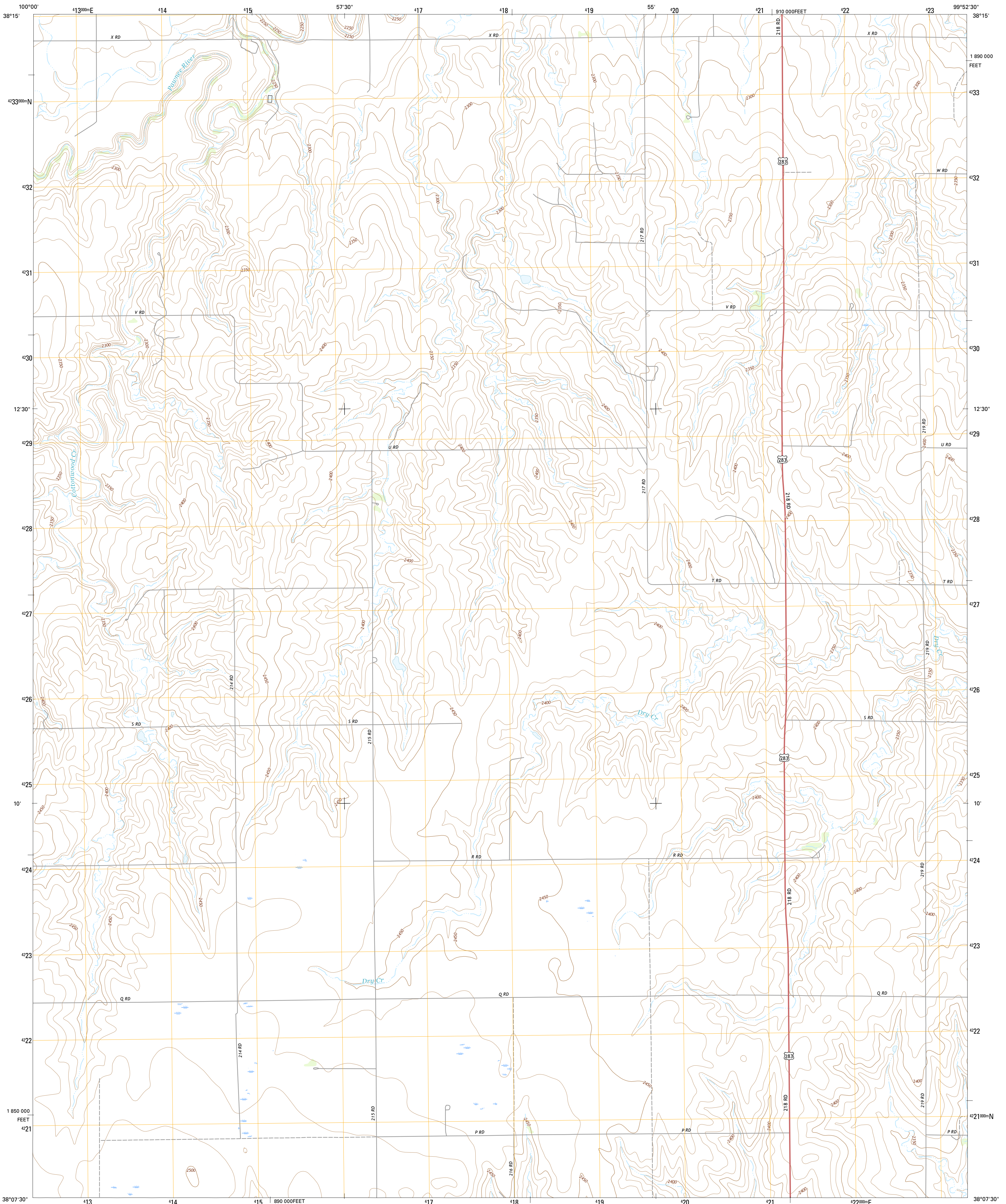




U.S. DEPARTMENT OF THE INTERIOR
U.S. GEOLOGICAL SURVEY



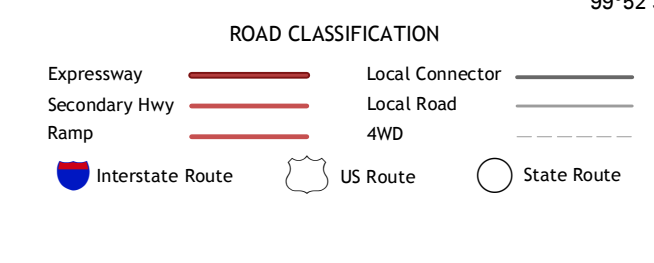
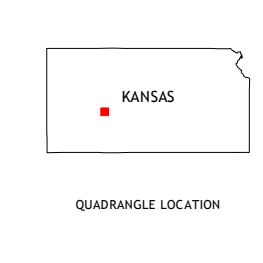
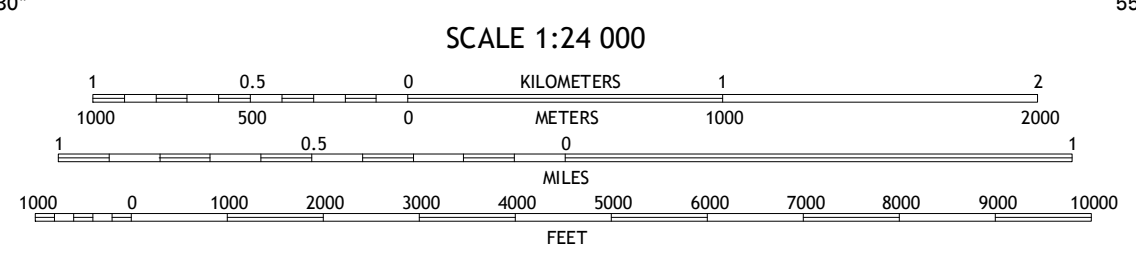
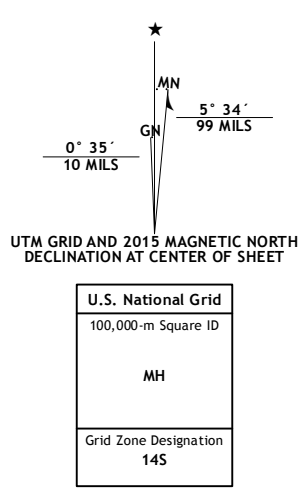
JETMORE NW QUADRANGLE
KANSAS-HODGEMAN CO.
7.5-MINUTE SERIES



Produced by the United States Geological Survey
 North American Datum of 1983 (NAD83)
 World Geodetic System of 1984 (WGS84) Projection and
 1 000-meter grid: Universal Transverse Mercator, Zone 14S
 10 000-foot ticks: Kansas Coordinate System of 1983 (south zone)

This map is not a legal document. Boundaries may be generalized for this map scale. Private lands within government reservations may not be shown. Obtain permission before entering private lands.

Imagery.....NAIP, July 2014
 Roads.....U.S. Census Bureau, 2014 2015
 Names.....GNIS, 2015
 Hydrography.....National Hydrography Dataset, 2014
 Contours.....National Elevation Dataset, 2006
 Boundaries.....Multiple sources; see metadata file 1972-2015
 Public Land Survey System.....BLM, 2015
 Wetlands.....FWS National Wetlands Inventory 1977-2014



1	2	3
4	5	6
7	8	

ADJOINING QUADRANGLES

JETMORE NW, KS
2015

