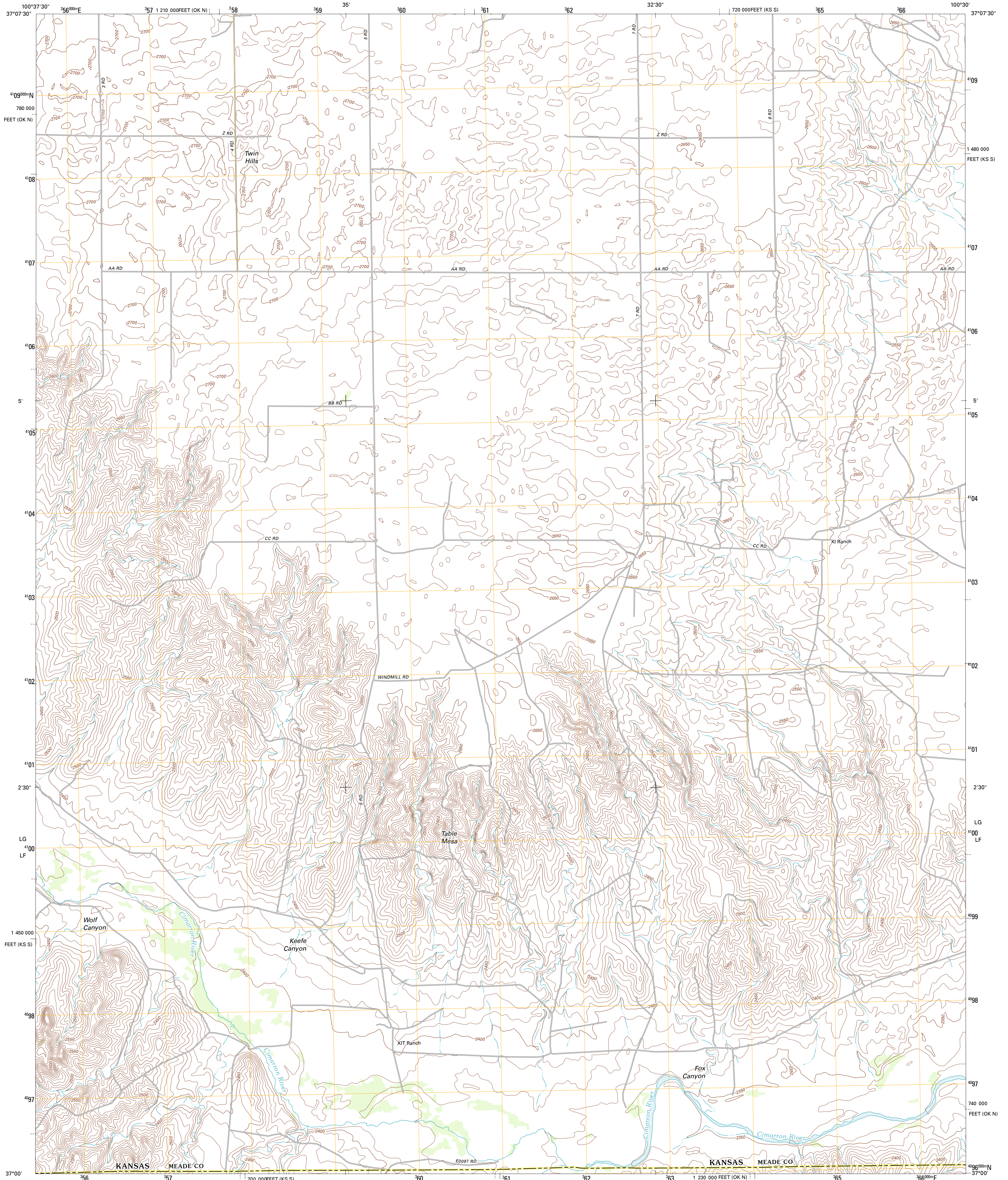




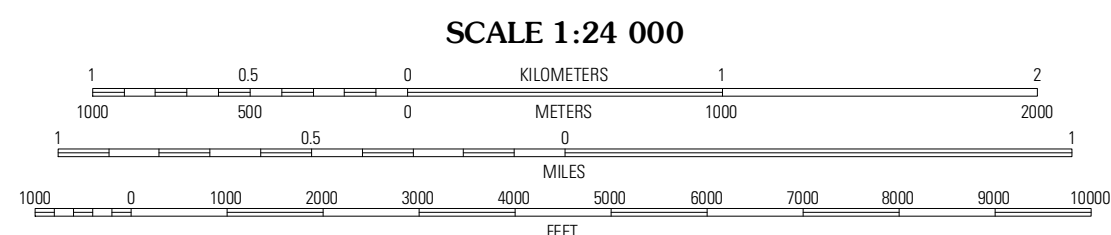
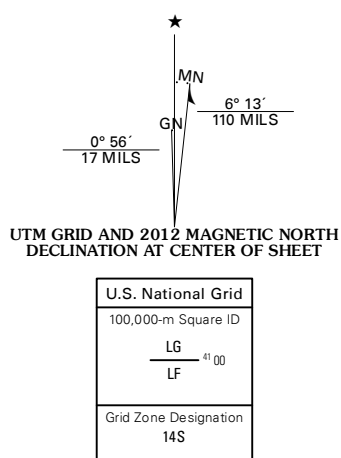
U.S. DEPARTMENT OF THE INTERIOR
U. S. GEOLOGICAL SURVEY



KISMET SE QUADRANGLE
KANSAS-OKLAHOMA
7.5-MINUTE SERIES

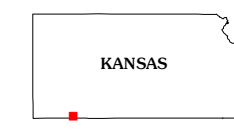


Produced by the United States Geological Survey
North American Datum of 1983 (NAD83)
World Geodetic System of 1984 (WGS84). Projection and
1 000-meter grid: Universal Transverse Mercator, Zone 14S
10 000-foot ticks: Kansas Coordinate System of 1983 (south
zone), Oklahoma Coordinate System of 1983 (north zone)



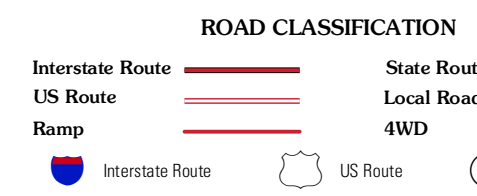
CONTOUR INTERVAL 10 FEET
NORTH AMERICAN VERTICAL DATUM OF 1988

This map was produced to conform with the
National Geospatial Program US Topo Product Standard, 2011.
A metadata file associated with this product is draft version 0.6.4



QUADRANGLE LOCATION

Kismet	Kismet NE	Lake Meade
Kismet SW	Kismet SE	Irish Flats
Beaver NW	Forgan	Mokane NW



KISMET SE, KS-OK
2012

ADJOINING 7.5' QUADRANGLES