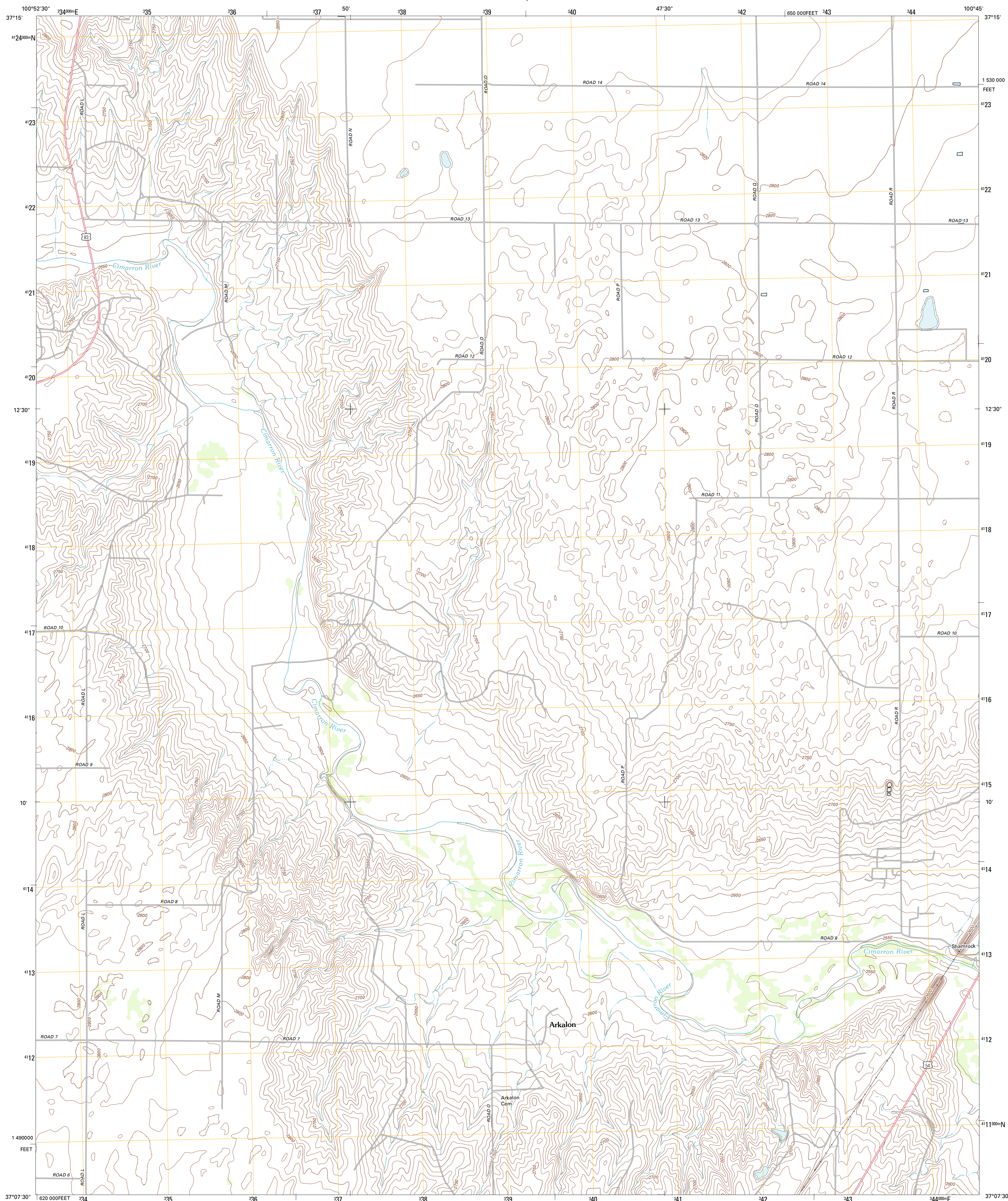




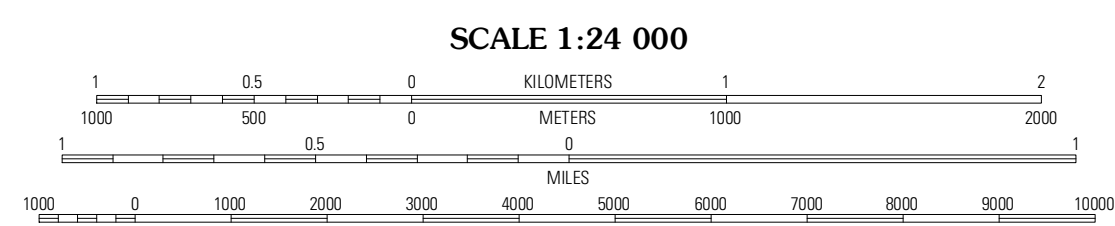
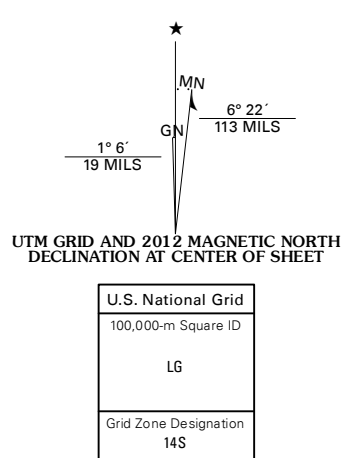
U.S. DEPARTMENT OF THE INTERIOR
U. S. GEOLOGICAL SURVEY



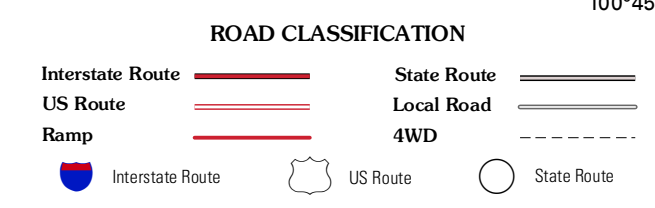
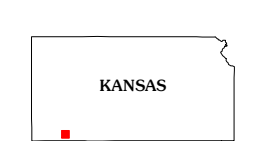
LIBERAL NE QUADRANGLE
KANSAS-SEWARD CO.
7.5-MINUTE SERIES



Produced by the United States Geological Survey
North American Datum of 1983 (NAD83)
World Geodetic System of 1984 (WGS84). Projection and
1 000-meter grid: Universal Transverse Mercator, Zone 14S
10 000-foot ticks: Kansas Coordinate System of 1983 (south zone)



CONTOUR INTERVAL 10 FEET
NORTH AMERICAN VERTICAL DATUM OF 1988
This map was produced to conform with the
National Geospatial Program US Topo Product Standard, 2011.
A metadata file associated with this product is draft version 0.6.4



QUADRANGLE LOCATION

| | | |
|-------------|-------------|-----------|
| Sublette SW | Sublette SE | Plains SW |
| Liberal NW | Liberal NE | Kismet |
| Liberal | Hayne | Kismet SW |

LIBERAL NE, KS
2012

ADJOINING 7.5 QUADRANGLES