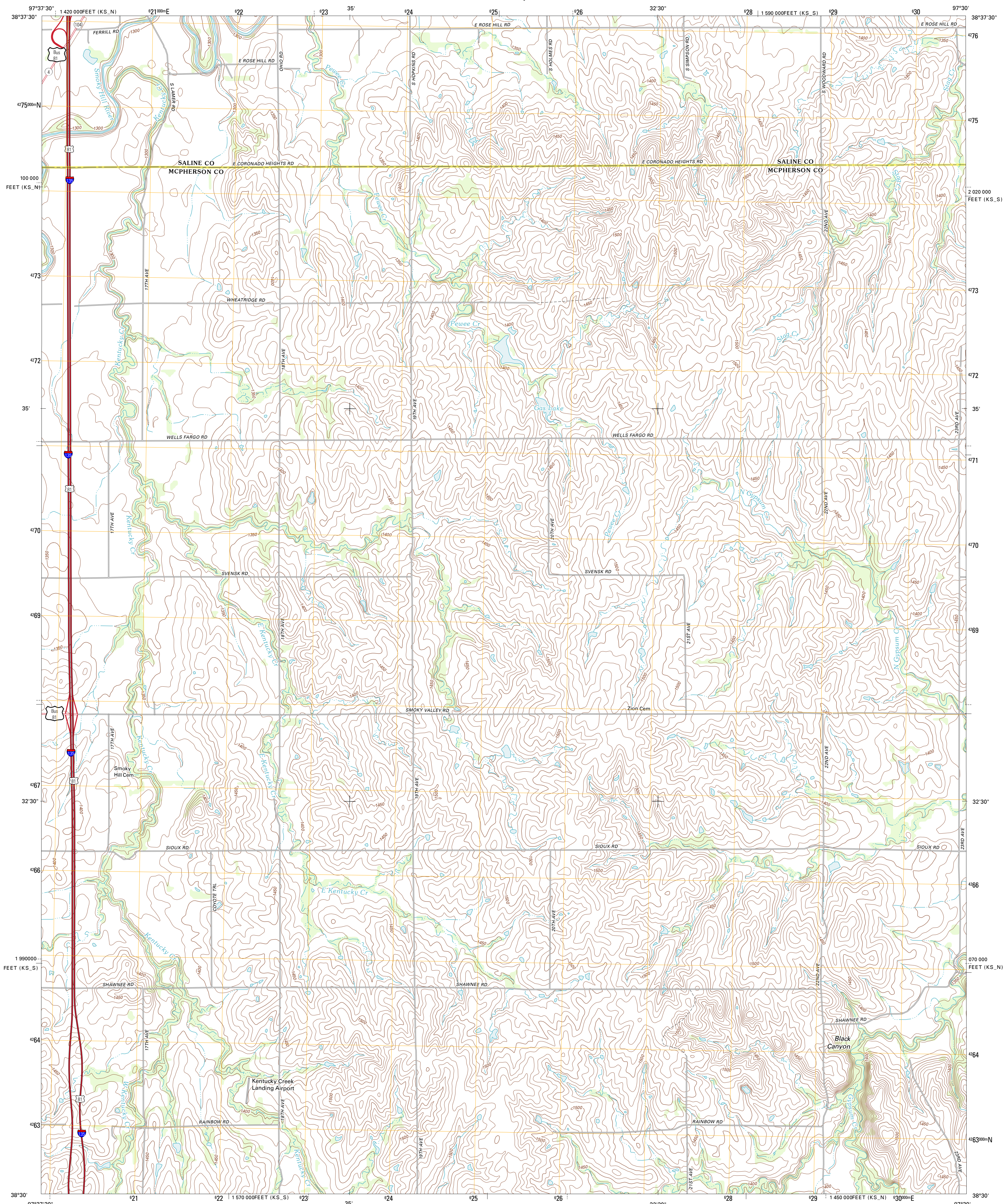




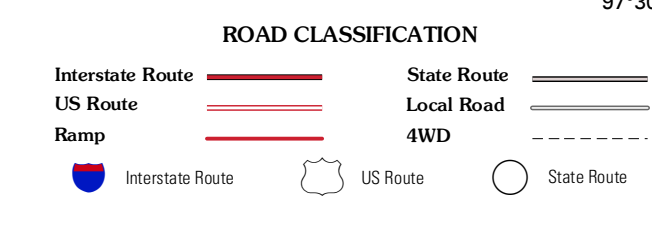
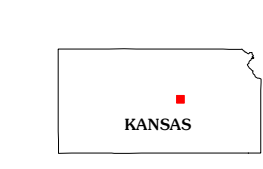
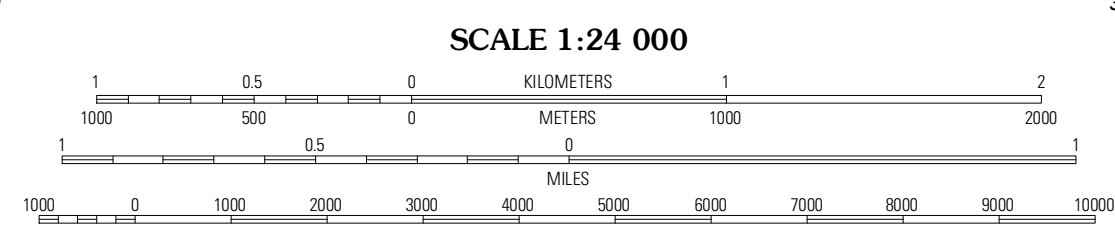
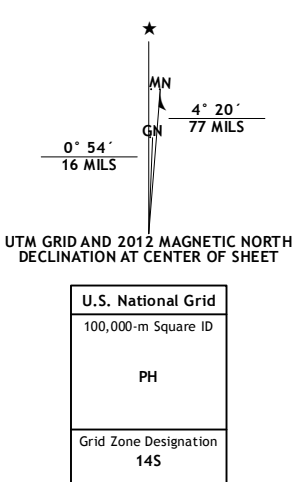
U.S. DEPARTMENT OF THE INTERIOR
U. S. GEOLOGICAL SURVEY



LINSBORG SE QUADRANGLE
KANSAS
7.5-MINUTE SERIES



Produced by the United States Geological Survey
North American Datum of 1983 (NAD83)
World Geodetic System of 1984 (WGS84). Projection and
1 000-meter grid: Universal Transverse Mercator, Zone 14S
10 000-foot ticks: Kansas Coordinate System of 1983 (south
and north zones)



QUADRANGLE LOCATION

Smolen	Assaria	Gypsum
Lindsborg	Linsborg SE	Roxbury
McPherson North	Guthrie	Canton

CONTOUR INTERVAL 10 FEET
NORTH AMERICAN VERTICAL DATUM OF 1988

This map was produced to conform with the
National Geospatial Program US Topo Product Standard, 2011.
A metadata file associated with this product is draft version 0.6.4

LINSBORG SE, KS
2012

ADJOINING 7.5 QUADRANGLES