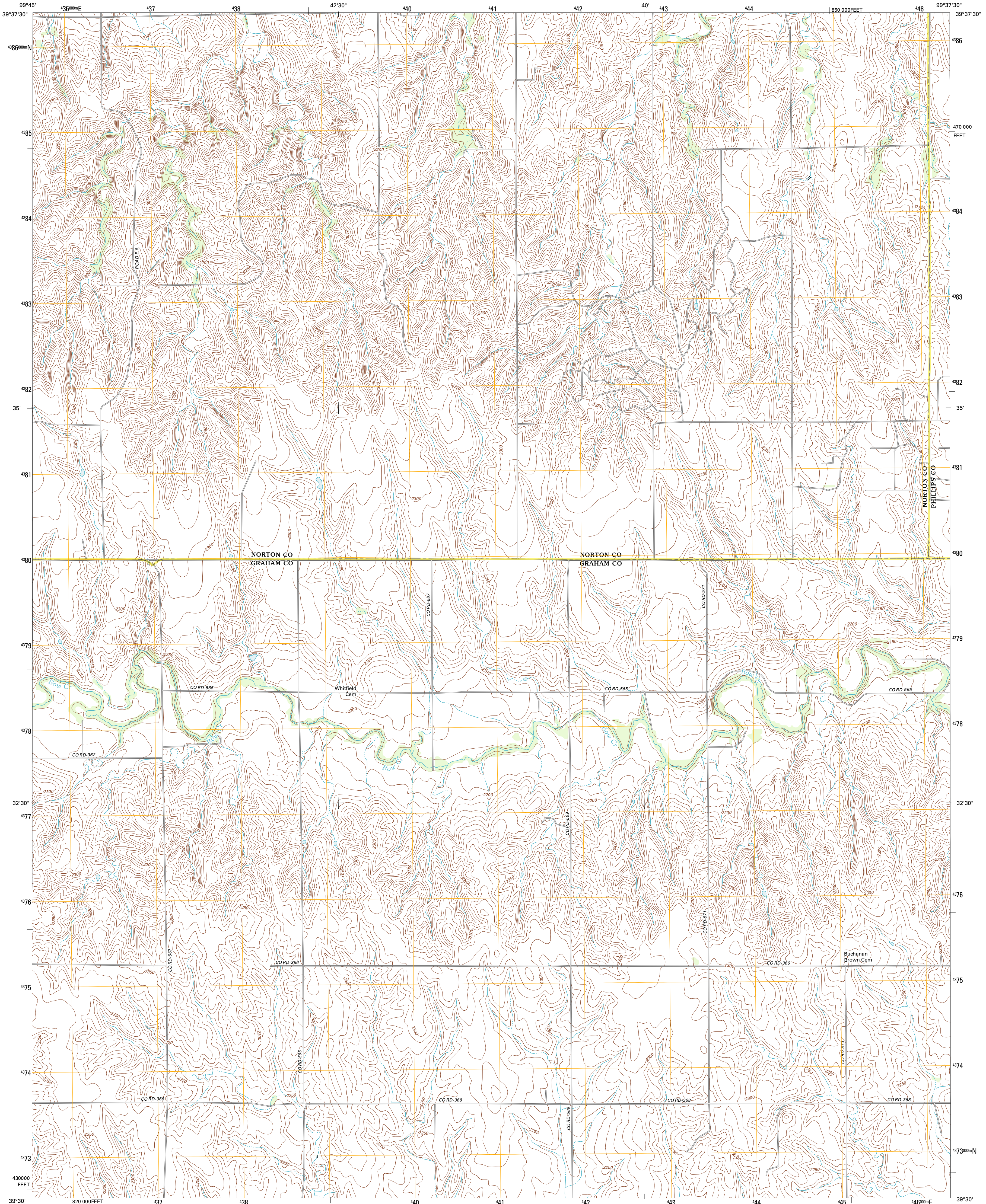




U.S. DEPARTMENT OF THE INTERIOR
U. S. GEOLOGICAL SURVEY

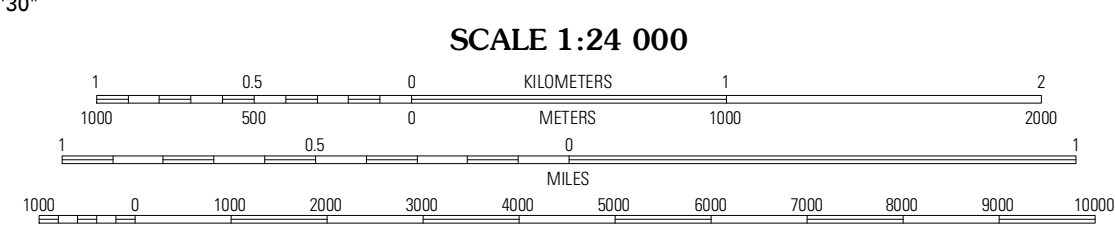
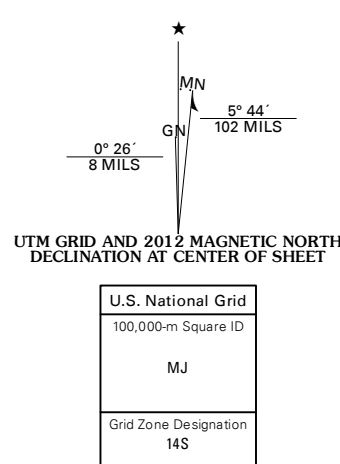


LOGAN SW QUADRANGLE
KANSAS
7.5-MINUTE SERIES

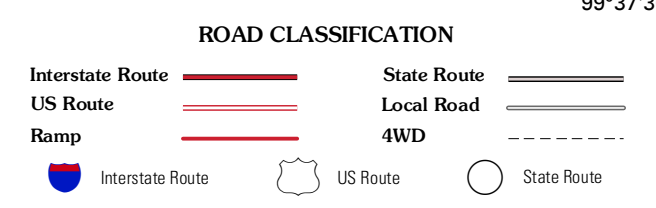
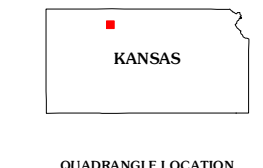


Produced by the United States Geological Survey
North American Datum of 1983 (NAD83)
©2006-2011 TomTom
World Geodetic System of 1984 (WGS84) Projection and
1 000-meter grid. Universal Transverse Mercator Zone 14S
10 000-foot ticks: Kansas Coordinate System of 1983 (north
zone)

Imagery.....NAIP, August 2010
Roads.....©2006-2011 TomTom
Names.....GNIS, 2012
Hydrography.....National Hydrography Dataset, 2010
Contours.....National Elevation Dataset, 2012
Boundaries.....Census, BWC, B.C., USGS, 1972 - 2012



CONTOUR INTERVAL 10 FEET
NORTH AMERICAN VERTICAL DATUM OF 1988
This map was produced to conform with the
National Geospatial Program US Topo Product Standard, 2011.
A metadata file associated with this product is draft version 0.6.4



QUADRANGLE LOCATION

Edmond	Densmore	Logan
Edmond SE	Logan SW	Logan SE
Hill City North	Boque NW	Nicodemus

ADJOINING 7.5' QUADRANGLES

LOGAN SW, KS
2012