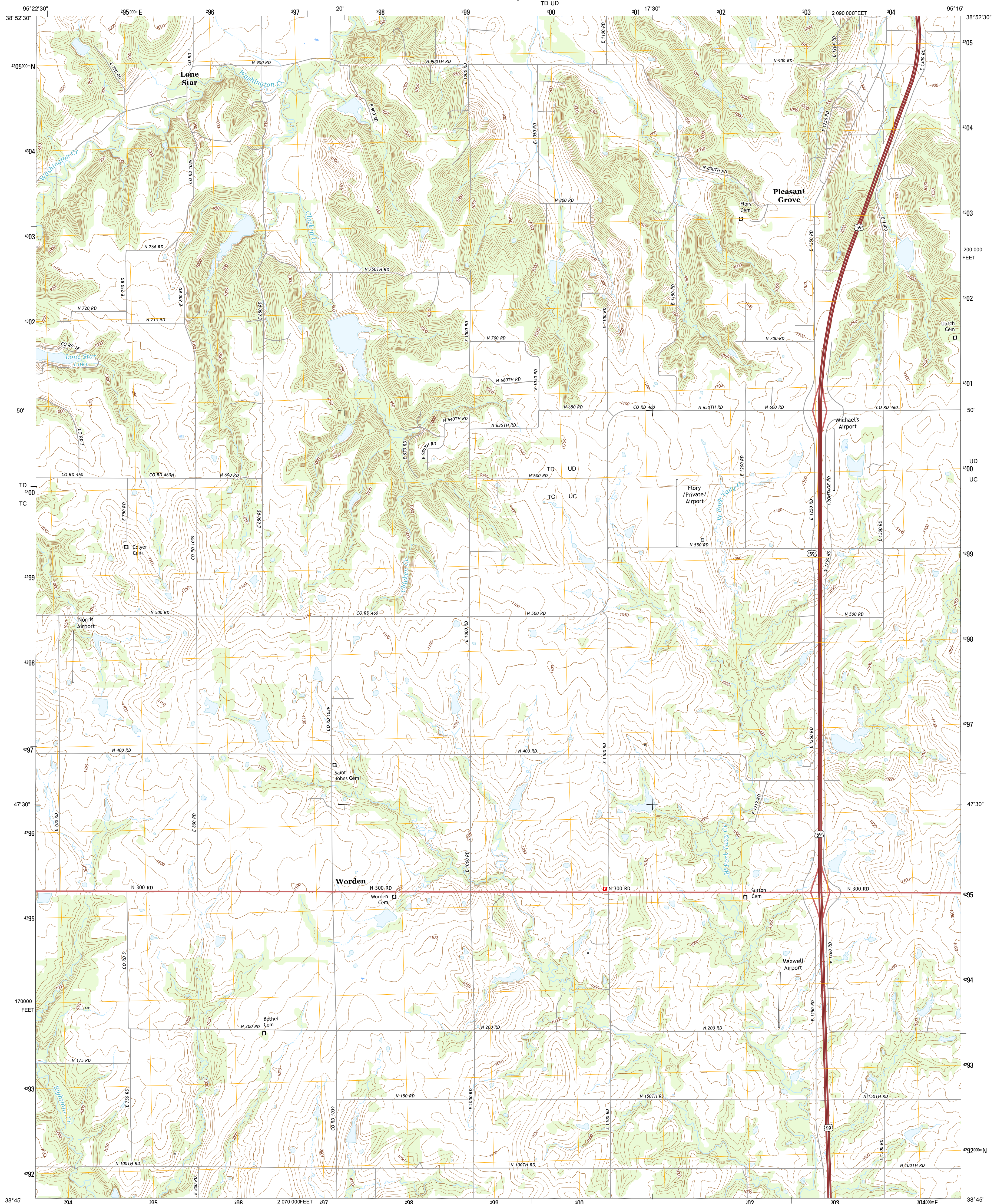




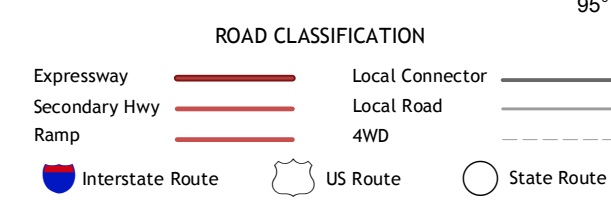
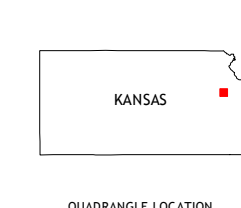
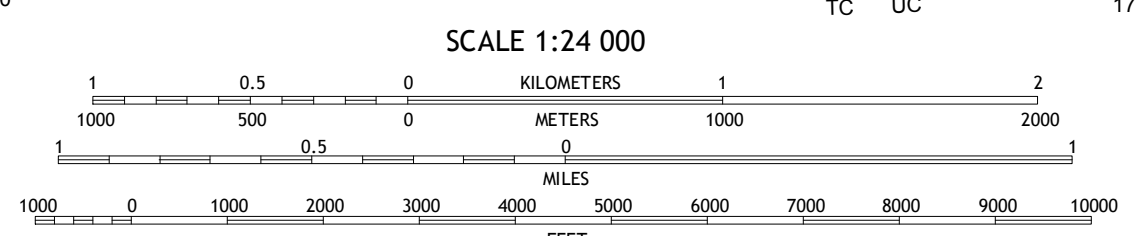
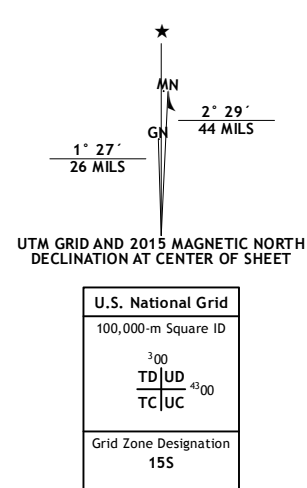
U.S. DEPARTMENT OF THE INTERIOR
U.S. GEOLOGICAL SURVEY



LONE STAR QUADRANGLE
KANSAS-DOUGLAS CO.
7.5-MINUTE SERIES



Produced by the United States Geological Survey
 North American Datum of 1983 (NAD83)
 World Geodetic System of 1984 (WGS84). Projection and
 1000-meter grid: Universal Transverse Mercator, Zone 15S
 10 000-foot ticks: Kansas Coordinate System of 1983 (north
 zone)
 This map is not a legal document. Boundaries may be
 generalized for this map scale. Private lands within government
 reservations may not be shown. Obtain permission before
 entering private lands.
 Imagery.....NAIP, July 2014
 Roads.....U.S. Census Bureau, 2014 - 2015
 Names.....GNIS, 2015
 Hydrography.....National Hydrography Dataset, 2014
 Contours.....National Elevation Dataset, 2008
 Boundaries.....Multiple sources; see metadata file 1972 - 2015
 Public Land Survey System.....BLM, 2015
 Wetlands.....FWS National Wetlands Inventory 1977 - 2014



1	2	3
4	5	6
7	8	

ADJOINING QUADRANGLES

1 Clinton
2 Lawrence West
3 Lawrence East
4 Globe
5 Baldwin City
6 Ottawa NW
7 Ottawa North
8 Le Loup

LONE STAR, KS
2015

