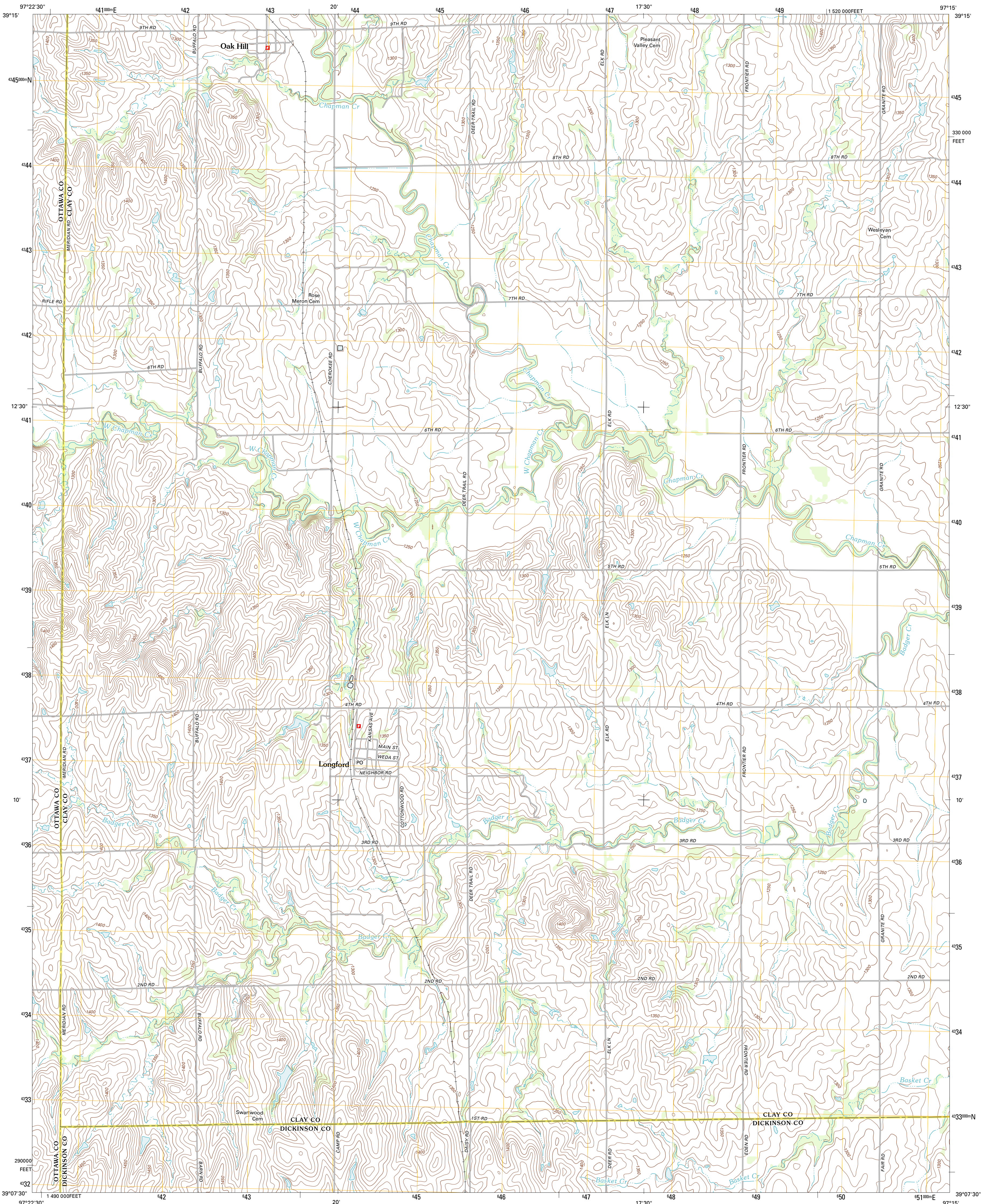




U.S. DEPARTMENT OF THE INTERIOR  
U. S. GEOLOGICAL SURVEY



LONGFORD QUADRANGLE  
KANSAS  
7.5-MINUTE SERIES



Produced by the United States Geological Survey  
North American Datum of 1983 (NAD83)  
World Geodetic System of 1984 (WGS84). Projection and  
1 000-meter grid: Universal Transverse Mercator, Zone 14S  
10 000-foot ticks: Kansas Coordinate System of 1983 (north  
zone)

Imagery:.....NAIP, July 2010  
Roads:.....©2006-2011 TomTom  
Names:.....GNIS, 2012  
Hydrography:.....National Hydrography Dataset, 2010  
Contours:.....National Elevation Dataset, 2011  
Boundaries:.....Census, IBWC, IBC, USGS, 1972 - 2012

UTM GRID AND 2012 MAGNETIC NORTH  
DECLINATION AT CENTER OF SHEET

1" = 4' 9"

19 MILES

U.S. National Grid

100,000-m Square ID

PJ

Grid Zone Designation

14S

SCALE 1:24 000

1 000 0 500 0 500 1 000 2 000

KILOMETERS

1 000 0 1000 2000 3000 4000 5000 6000 7000 8000 9000 10000

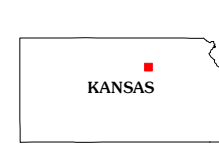
METERS

1 000 0 1000 2000 3000 4000 5000 6000 7000 8000 9000 10000

FEET

CONTOUR INTERVAL 10 FEET  
NORTH AMERICAN VERTICAL DATUM OF 1988

This map was produced to conform with the  
National Geospatial Program US Topo Product Standard, 2011.  
A metadata file associated with this product is draft version 0.6.4



QUADRANGLE LOCATION		
Miltonvale	Idans	Clay Center SW
Manchester NW	Longford	Industry
Vine Creek	Manchester	Buckeye

ROAD CLASSIFICATION

Interstate Route

State Route

US Route

Ramp

Local Road

4WD

LONGFORD, KS  
2012