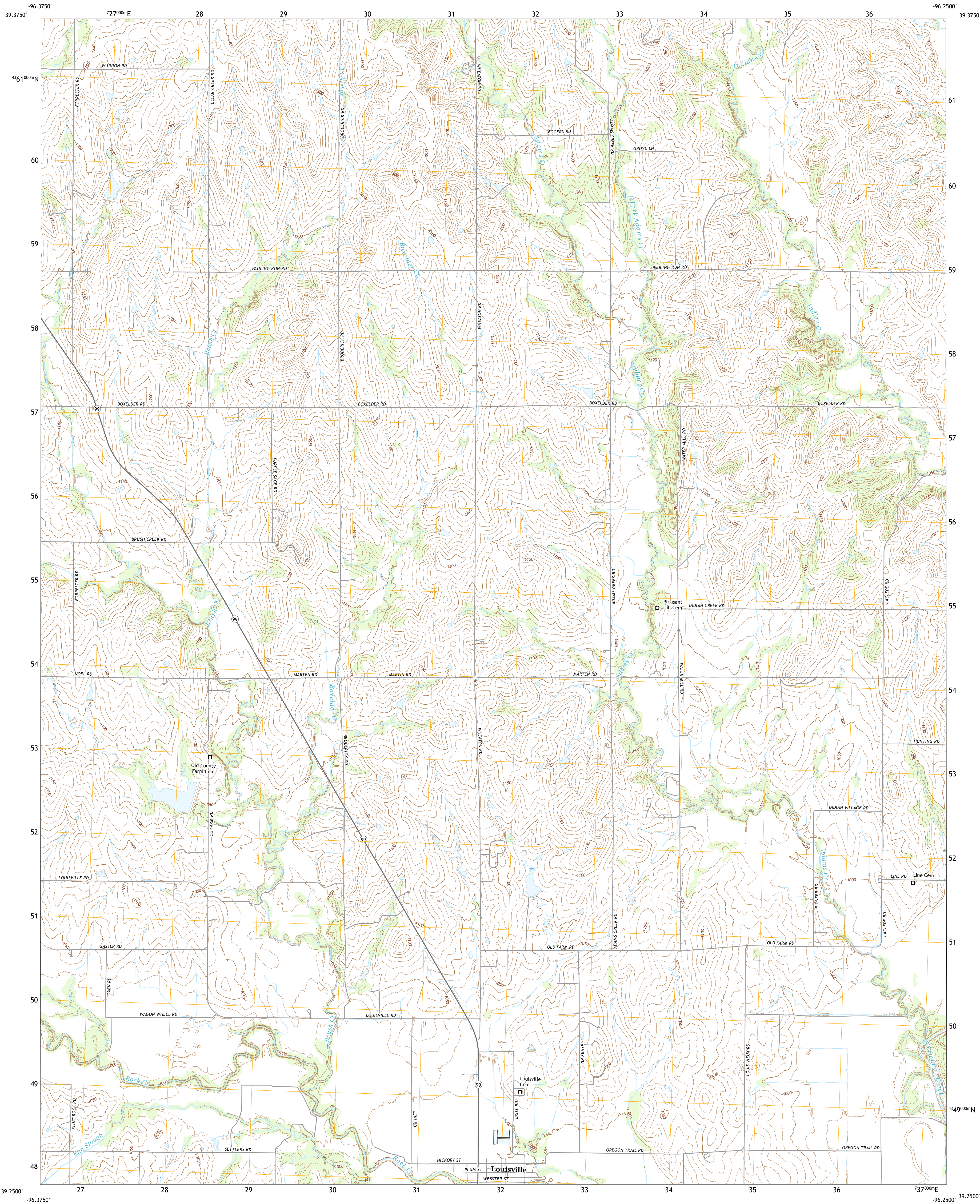




U.S. DEPARTMENT OF THE INTERIOR
U.S. GEOLOGICAL SURVEY



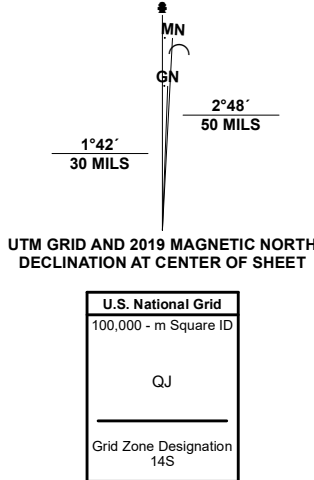
LOUISVILLE QUADRANGLE
KANSAS - POTTAWATOMIE COUNTY
7.5-MINUTE SERIES



Produced by the United States Geological Survey

North American Datum of 1983 (NAD83)
World Geodetic System of 1984 (WGS84). Projection and
1 000-meter grid/Universal Transverse Mercator, Zone 14S
This map is not a legal document. Boundaries may be
generalized for this map scale. Private lands within government
reservations may not be shown. Obtain permission before
entering private lands.

Imagery.....NAIP, August 2017 - September 2017
Roads.....U.S. Census Bureau, 2015 - 2018
Names.....GNIS, 1984 - 2021
Hydrography.....National Hydrography Dataset, 2001 - 2018
Contours.....National Elevation Dataset, 2014
Boundaries.....Multiple sources; see metadata file 2019 - 2021
Public Land Survey System.....BLM, 2018
Wetlands.....FWS National Wetlands Inventory 1985



CONTOUR INTERVAL 10 FEET
NORTH AMERICAN VERTICAL DATUM OF 1988
This map was produced to conform with the
National Geospatial Program US Topo Product Standard.



QUADRANGLE LOCATION

1	2	3
4	5	6
7	8	9

1 Westmoreland
2 Westmoreland NE
3 Onaga
4 Flinch
5 Laclede
6 Saint George
7 Wamego
8 Belvue

ROAD CLASSIFICATION
Expressway
Secondary Hwy
Ramp
Local Connector
Local Road
4WD
US Route
State Route

LOUISVILLE, KS
2022

