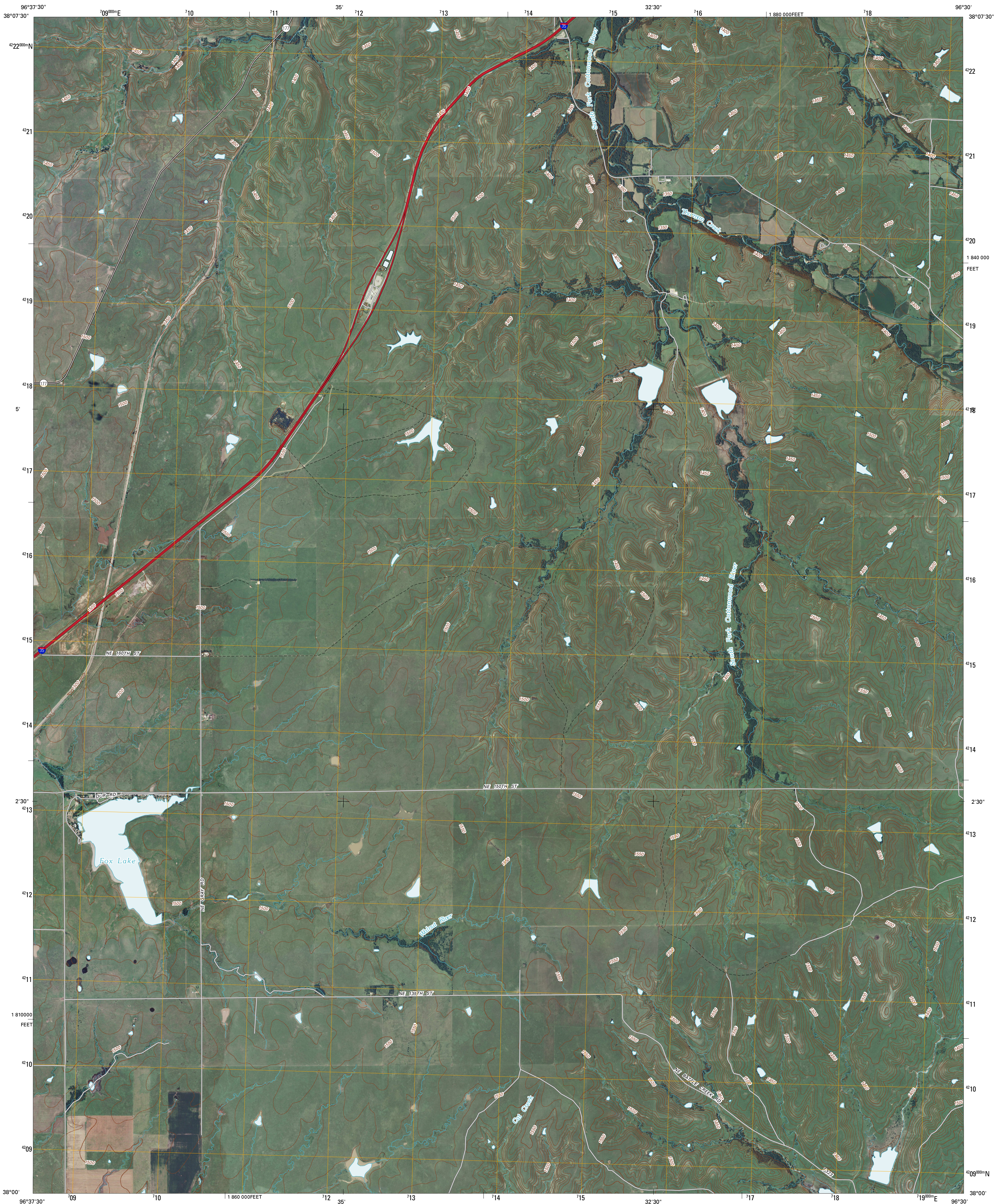




U.S. DEPARTMENT OF THE INTERIOR  
U. S. GEOLOGICAL SURVEY

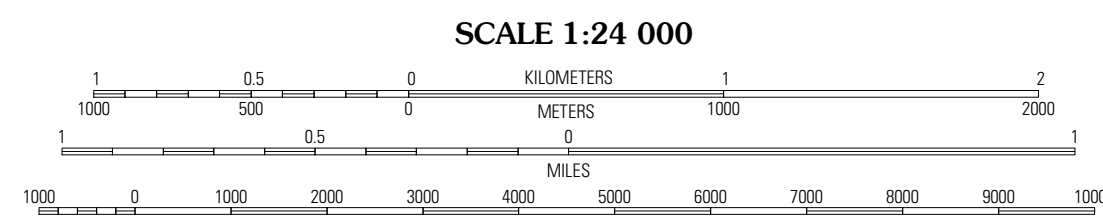
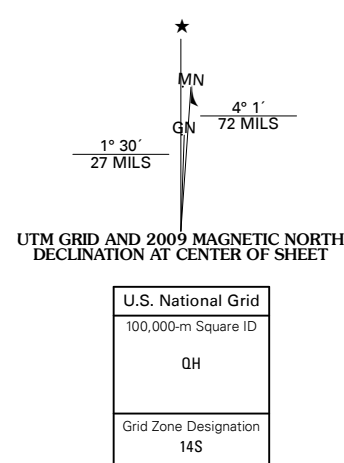


MATFIELD GREEN SE QUADRANGLE  
KANSAS  
7.5-MINUTE SERIES



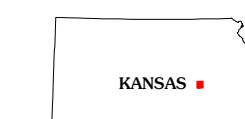
Produced by the United States Geological Survey  
North American Datum of 1983 (NAD83)  
World Geodetic System of 1984 (WGS84). Projection and  
1 000-meter grid: Universal Transverse Mercator, Zone 14S  
10 000-foot ticks: Kansas Coordinate System of 1983  
(south zone)

Imagery.....NAIP, July 2008  
Roads.....National Transportation Dataset, 2006 - 2008  
Names.....GNIS, 2008  
Hydrography.....National Hydrography Dataset, 2008  
Contours.....National Elevation Dataset, 2006



SCALE 1:24 000

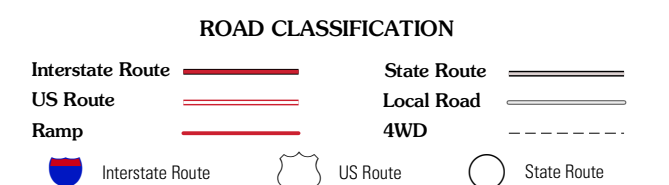
CONTOUR INTERVAL 10 FEET  
This map was produced to conform with version 0.5.10 of the  
draft USGS Standards for 7.5-Minute Quadrangle Maps.  
A metadata file associated with this product is also draft version 0.5.10



QUADRANGLE LOCATION

Honestead	Matfield Green	Thall NW
Cassoday	Matfield Green SE	Teterville
Rosalie NW	Rosalie NE	Lapland

ADJOINING 7.5' QUADRANGLES



MATFIELD GREEN SE, KS  
2009