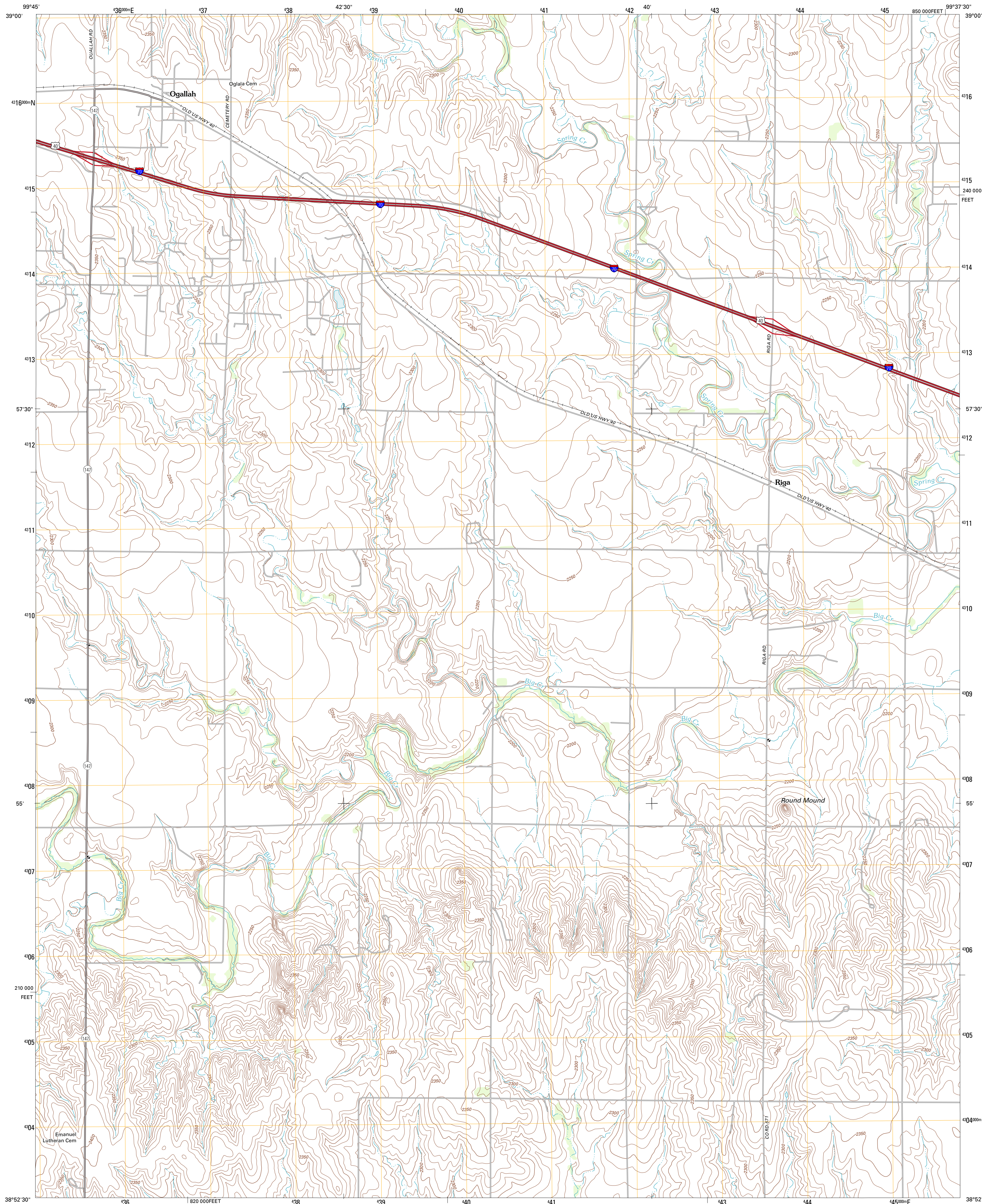




U.S. DEPARTMENT OF THE INTERIOR
U. S. GEOLOGICAL SURVEY

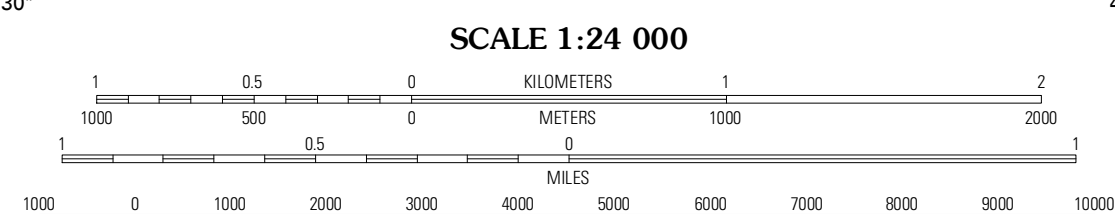
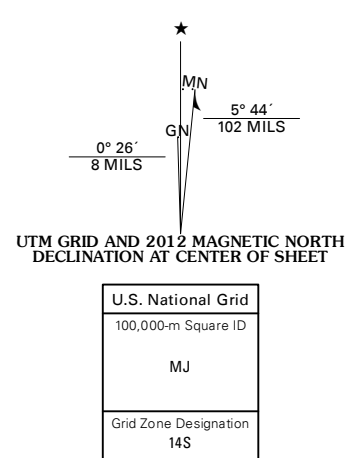


OGALLAH QUADRANGLE
KANSAS-TREGO CO.
7.5-MINUTE SERIES



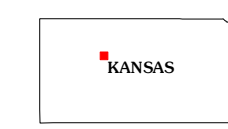
Produced by the United States Geological Survey
North American Datum of 1983 (NAD83)
World Geodetic System of 1984 (WGS84), Projection and
1 000-meter grid: Universal Transverse Mercator, Zone 14S
10 000-foot ticks: Kansas Coordinate System of 1983 (north zone)

Imagery: NIP, July 2010
Roads: ©2006-2011 TomTom
Names: GNS, 2012
Hydrography: National Hydrography Dataset, 2010
Contours: National Elevation Dataset, 2006
Boundaries: Census, IBWC, IBC, USGS, 1972 - 2012



CONTOUR INTERVAL 10 FEET
NORTH AMERICAN VERTICAL DATUM OF 1988

This map was produced to conform with the
National Geospatial Program US Topo Product Standard, 2011.
A metadata file associated with this product is draft version 0.6.4



QUADRANGLE LOCATION

WaKeeney East	Mouth of Shaw Creek	Mouth of Wild Horse Creek
Trego Center NE	Ogallah	Ellis
Cedar Bluff	Cedar Bluff Dam	Ellis SE

ADJOINING 7.5' QUADRANGLES

WaKeeney East	Mouth of Shaw Creek	Mouth of Wild Horse Creek
Trego Center NE	Ogallah	Ellis
Cedar Bluff	Cedar Bluff Dam	Ellis SE

ROAD CLASSIFICATION

Interstate Route	State Route
US Route	Local Road
Ramp	4WD

OGALLAH, KS
2012