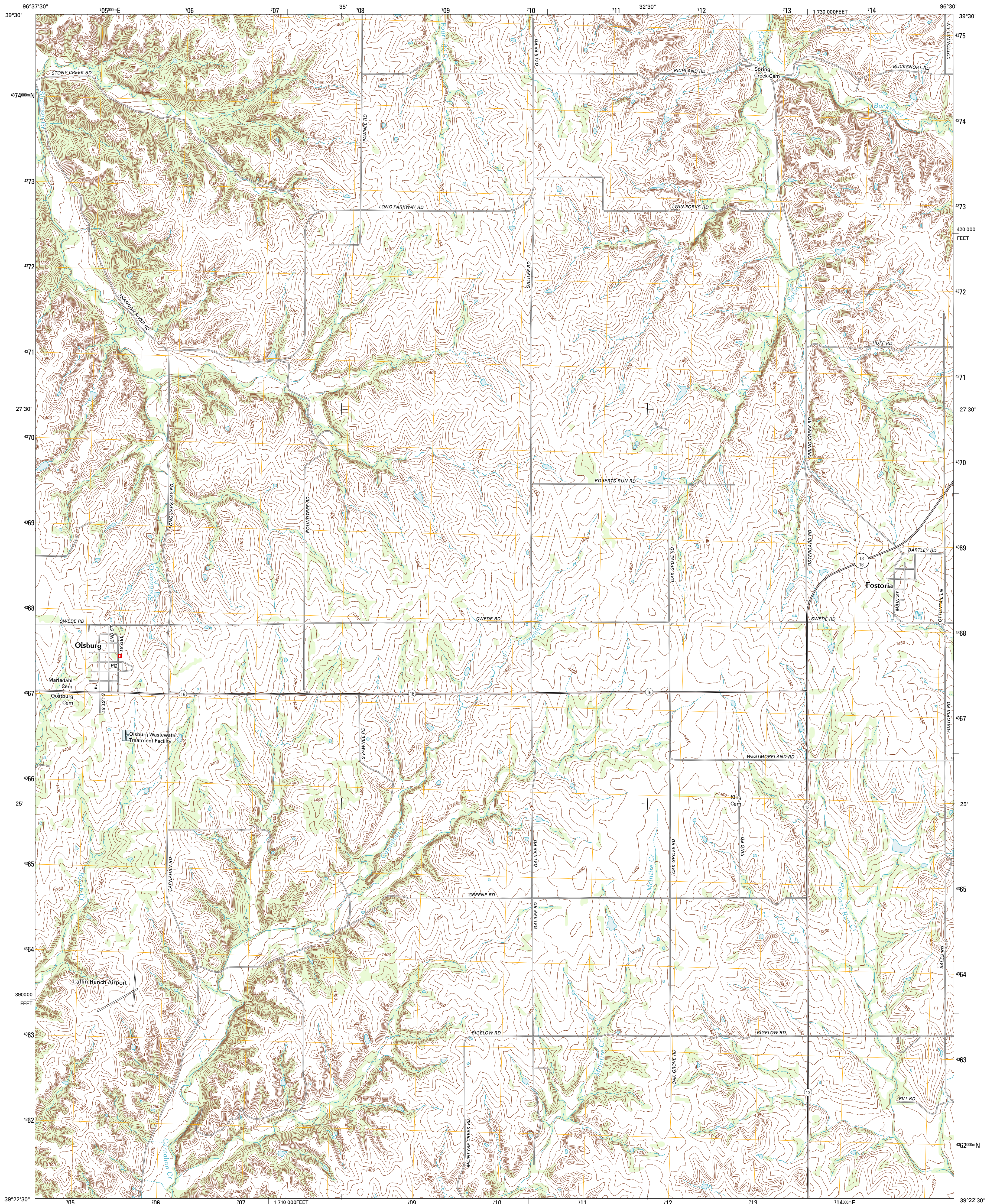




U.S. DEPARTMENT OF THE INTERIOR  
U. S. GEOLOGICAL SURVEY

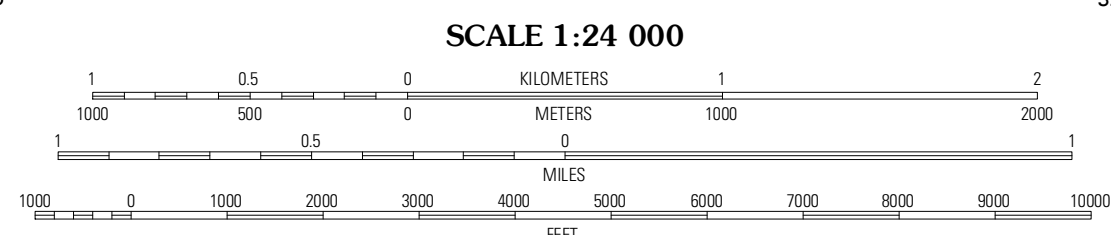
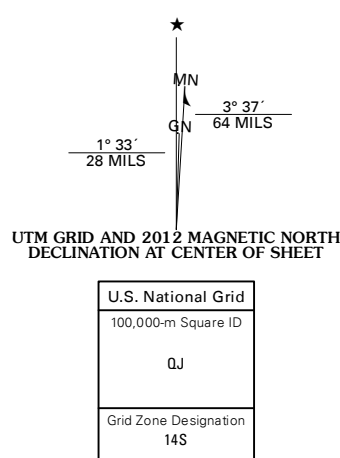


OLSBURG QUADRANGLE  
KANSAS-POTTAWATOMIE CO.  
7.5-MINUTE SERIES

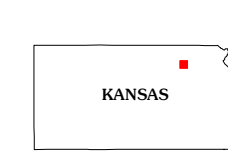


Produced by the United States Geological Survey  
North American Datum of 1983 (NAD83)  
World Geodetic System of 1984 (WGS84). Projection and  
1 000-meter grid: Universal Transverse Mercator, Zone 14S  
10 000-foot ticks: Kansas Coordinate System of 1983 (north zone)

Imagery.....NAIP, July 2010 - August 2010  
Roads.....©2006-2011 TomTom  
Names.....GNIS, 2012  
Hydrography.....National Hydrography Dataset, 2010  
Contours.....National Elevation Dataset, 2012  
Boundaries.....Census, IBWC, IBC, USGS, 1972 - 2012



CONTOUR INTERVAL 10 FEET  
NORTH AMERICAN VERTICAL DATUM OF 1988  
This map was produced to conform with the  
National Geospatial Program US Topo Product Standard, 2011.  
A metadata file associated with this product is draft version 0.6.4



QUADRANGLE LOCATION

Blue Rapids SW	Blue Rapids SE	Frankfort SW
Olsburg NW	Olsburg	Westmoreland
Olsburg SW	Tuttle Creek Dam	Fluah

ADJOINING 7.5' QUADRANGLES

ROAD CLASSIFICATION

Interstate Route	State Route
US Route	Local Road
Ramp	4WD

Legend for road symbols: Interstate Route (thick red line), State Route (thin red line), US Route (dashed red line), Local Road (thin black line), Ramp (red line with blue triangle), 4WD (dashed black line).

OLSBURG, KS  
2012