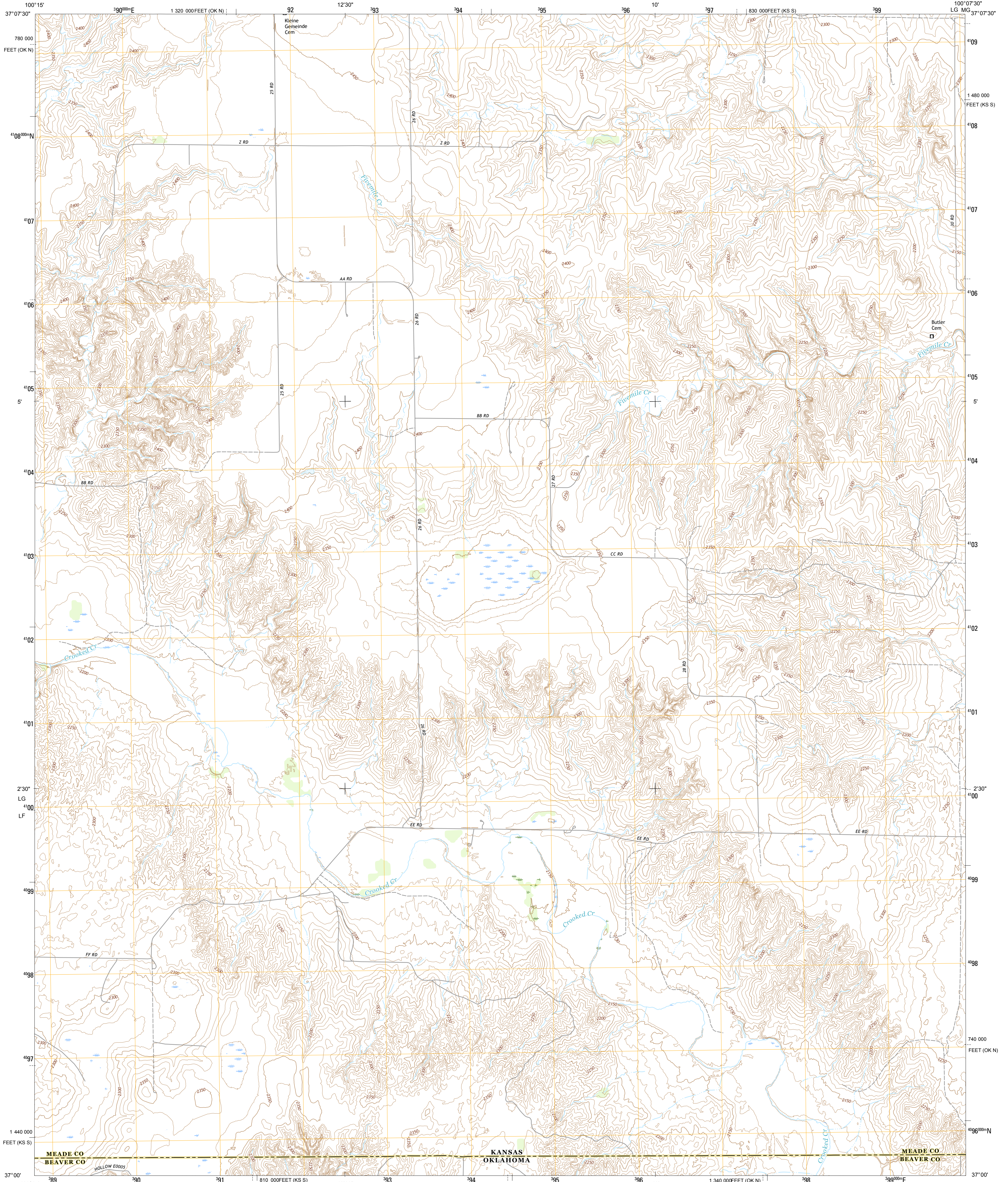




U.S. DEPARTMENT OF THE INTERIOR
U.S. GEOLOGICAL SURVEY



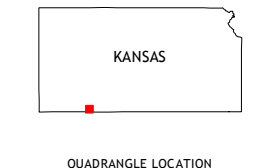
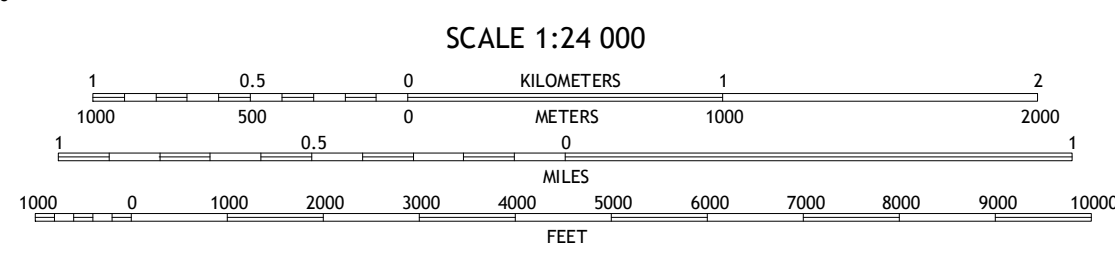
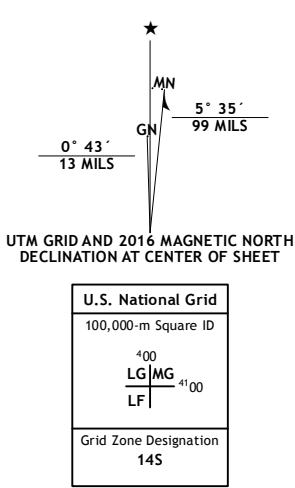
PROFFITT LAKE SW QUADRANGLE
KANSAS-OKLAHOMA
7.5-MINUTE SERIES



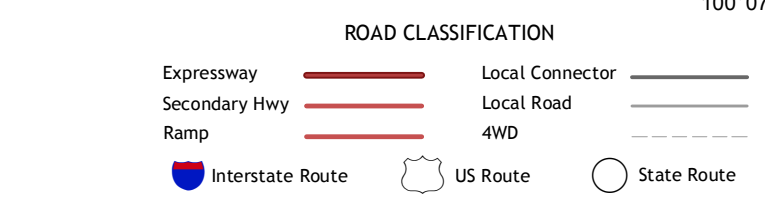
Produced by the United States Geological Survey
North American Datum of 1983 (NAD83)
World Geodetic System of 1984 (WGS84). Projection and
1 000-foot ticks: Kansas Coordinate System of 1983 (south
zone), Oklahoma Coordinate System of 1983 (north zone).

This map is not a legal document. Boundaries may be
generalized for this map scale. Private lands within government
reservations may not be shown. Obtain permission before
entering private lands.

Imagery.....N.A.I.P., June 2014
Roads.....U.S. Census Bureau, 2014
Names.....GNIS, 2015
Hydrography.....National Hydrography Dataset, 2014
Contours.....National Elevation Dataset, 2014
Boundaries.....Multiple sources; see metadata file 1972 - 2015
Public Land Survey System.....BLM, 2015
Wetlands.....FWS National Wetlands Inventory 1977 - 2014



1	2	3
4	5	6
7	8	



- 1 Irish Flats NE
- 2 Proffitt Lake NW
- 3 Proffitt Lake
- 4 Irish Flats SE
- 5 Mount Helen
- 6 Mokane
- 7 Gate NW
- 8 Gate NE

PROFFITT LAKE SW, KS-OK
2016

