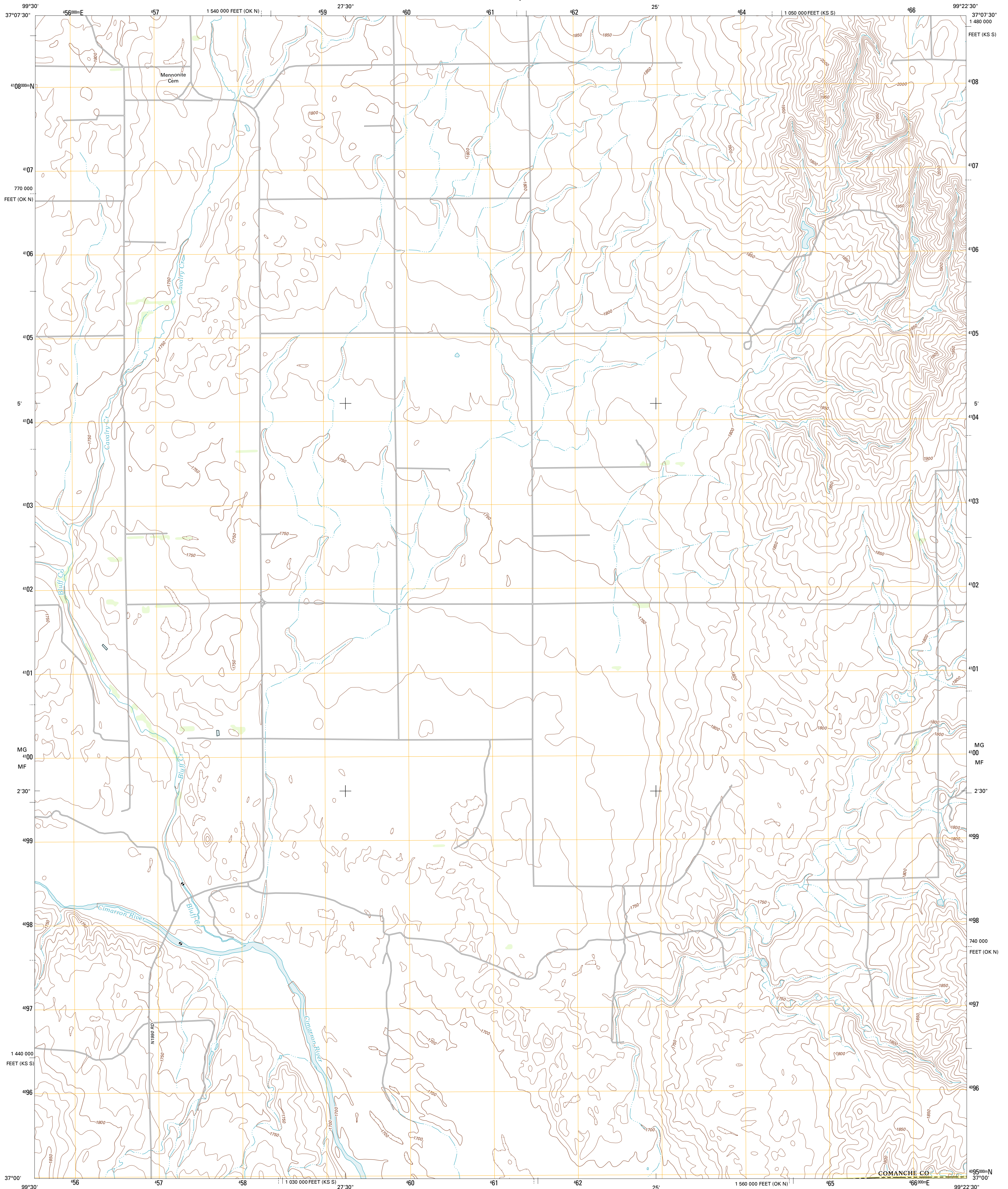




U.S. DEPARTMENT OF THE INTERIOR
U. S. GEOLOGICAL SURVEY

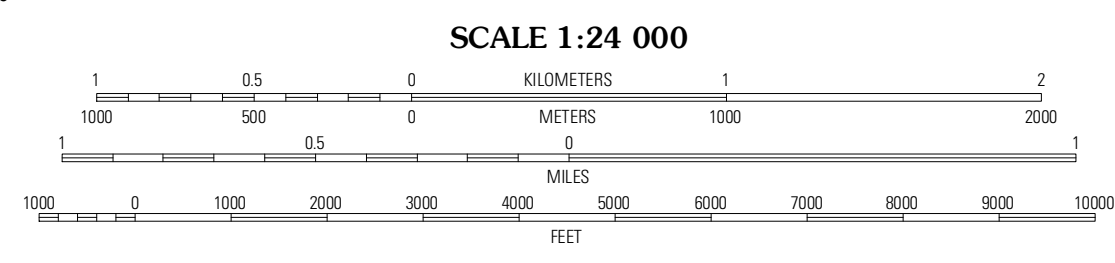
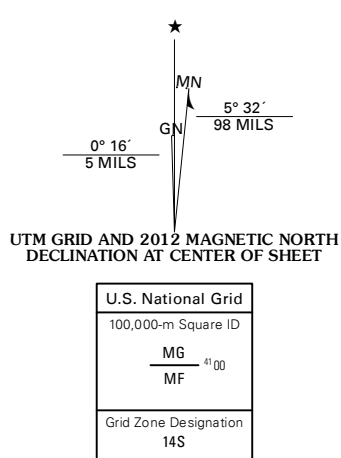


PROTECTION SW QUADRANGLE
KANSAS-OKLAHOMA
7.5-MINUTE SERIES



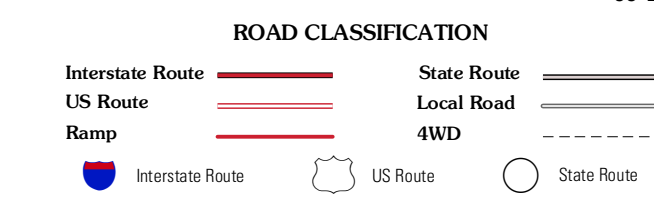
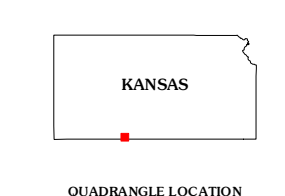
Produced by the United States Geological Survey
North American Datum of 1983 (NAD83)
World Geodetic System of 1984 (WGS84). Projection and
1 000-meter grid: Universal Transverse Mercator, Zone 14S
10 000-foot ticks: Kansas Coordinate System of 1983 (south
zone), Oklahoma Coordinate System of 1983 (north zone)

Imagery: NADIP, June 2010
Roads: ©2006-2011 TomTom
Names: GNIS, 2012
Hydrography: National Hydrography Dataset, 2010
Contours: National Elevation Dataset, 2006
Boundaries: Census, BWC, IBC, USGS, 1972-2012



CONTOUR INTERVAL 10 FEET
NORTH AMERICAN VERTICAL DATUM OF 1988

This map was produced to conform with the
National Geospatial Program US Topo Product Standard, 2011.
A metadata file associated with this product is draft version 0.6.4



QUADRANGLE LOCATION

Sugarloaf	Protection	Protection NE
Trout Creek	Protection SW	Buttermilk
Buffalo NE	Selman NW	Lookout

PROTECTION SW, KS-OK
2012

ADJOINING 7.5 QUADRANGLES