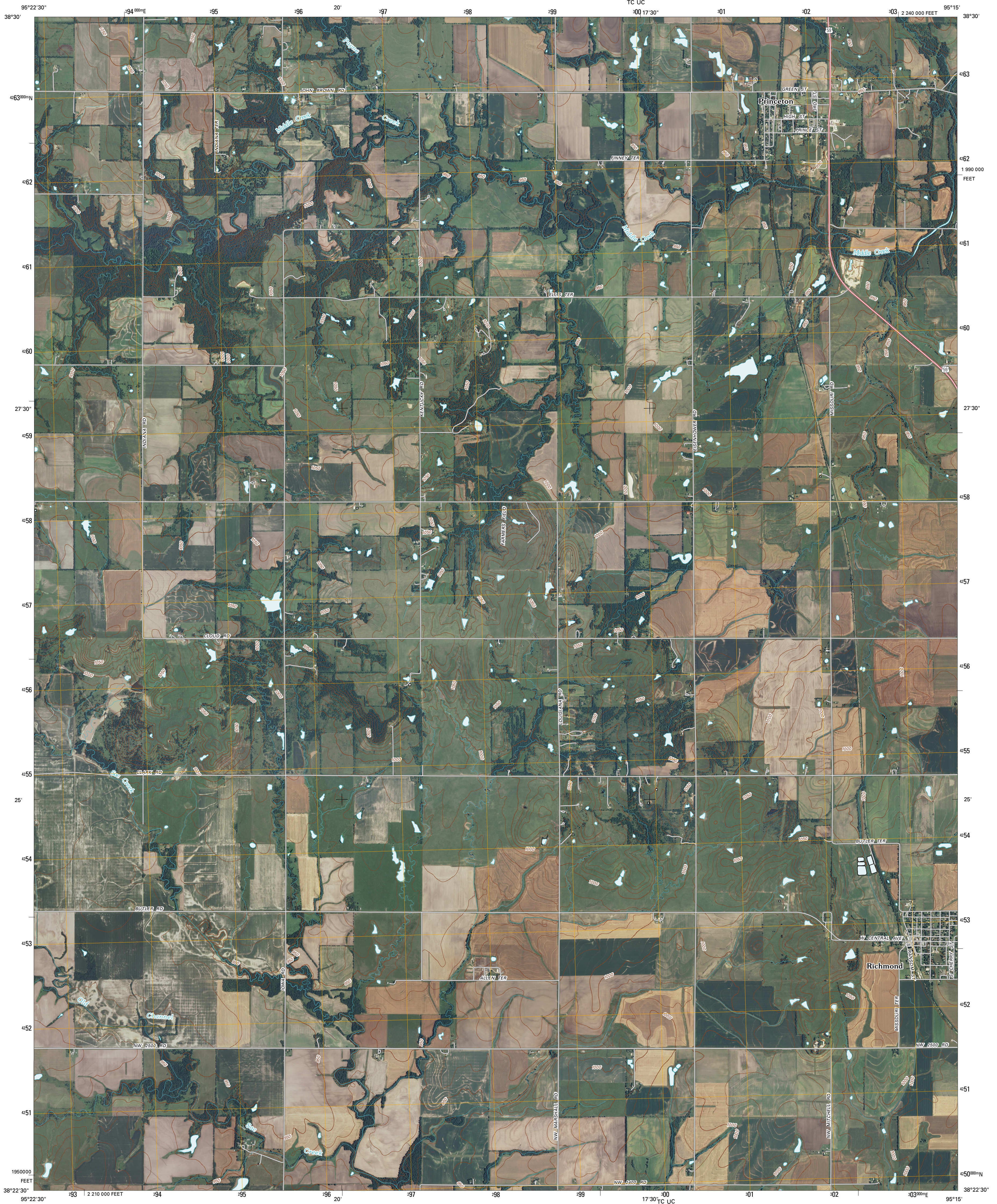




U.S. DEPARTMENT OF THE INTERIOR  
U. S. GEOLOGICAL SURVEY

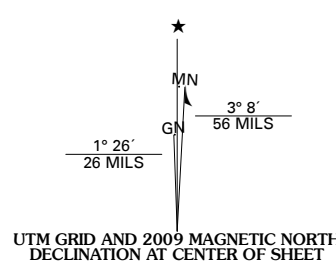


RICHMOND QUADRANGLE  
KANSAS  
7.5-MINUTE SERIES

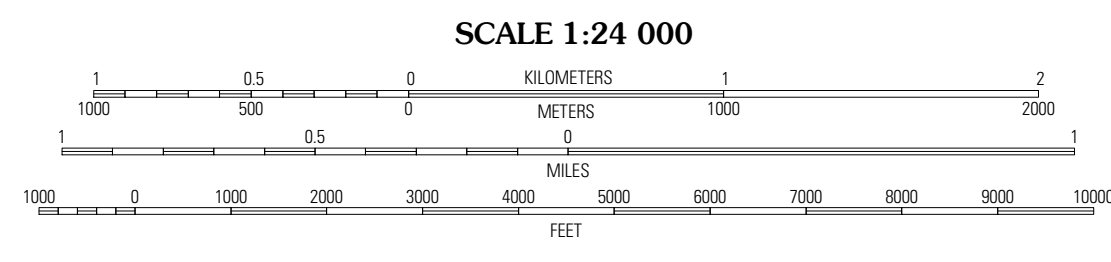


Produced by the United States Geological Survey  
North American Datum of 1983 (NAD83)  
World Geodetic System of 1984 (WGS84). Projection and  
1 000-meter grid: Universal Transverse Mercator, Zone 15S  
10 000-foot ticks: Kansas Coordinate System of 1983  
(south zone)

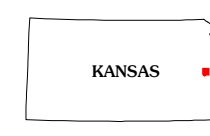
Imagery.....NAIP, June 2008  
Roads.....National Transportation Dataset, 2006  
Names.....GNIS, 2008  
Hydrography.....National Hydrography Dataset, 2008  
Contours.....National Elevation Dataset, 2005



U.S. National Grid
100,000-m Square ID
TC UC
Grid Zone Designation
15S

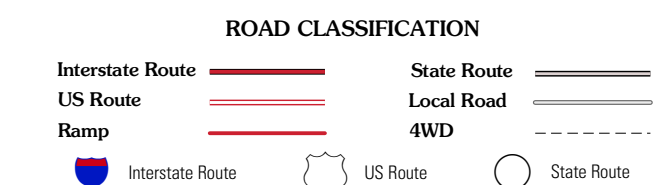


This map was produced to conform with version 0.5.10 of the  
draft USGS Standards for 7.5-Minute Quadrangle Maps.  
A metadata file associated with this product is also draft version 0.5.10



Pomona	Ottawa South	Peoria
Williamsburg	<b>Richmond</b>	Garnett NW
Harris	Garnett West	Garnett East

ADJOINING 7.5' QUADRANGLES



RICHMOND, KS  
2009