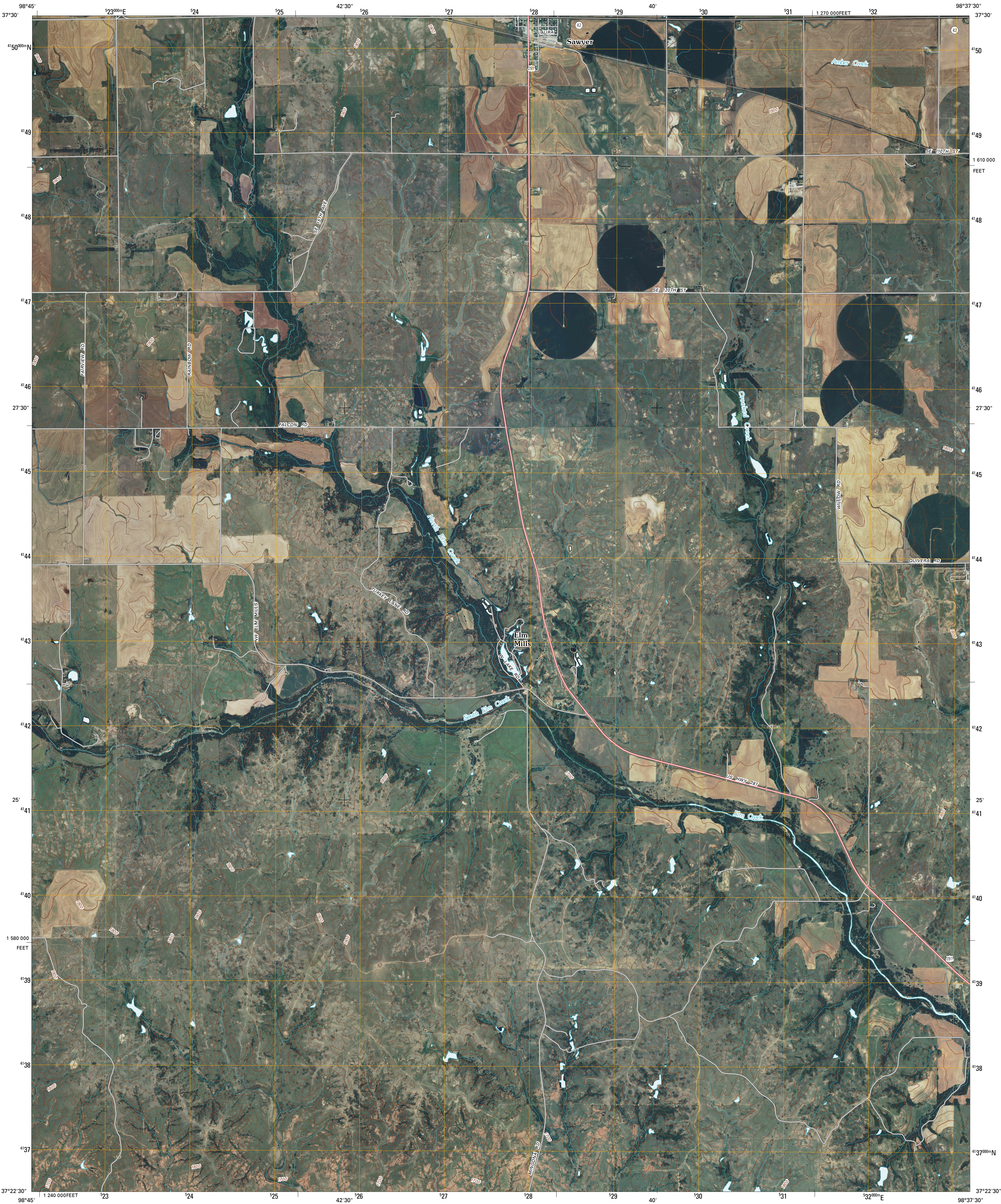




U.S. DEPARTMENT OF THE INTERIOR
U. S. GEOLOGICAL SURVEY

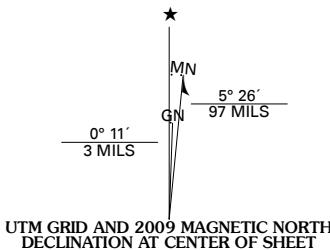


SAWYER QUADRANGLE
KANSAS
7.5-MINUTE SERIES

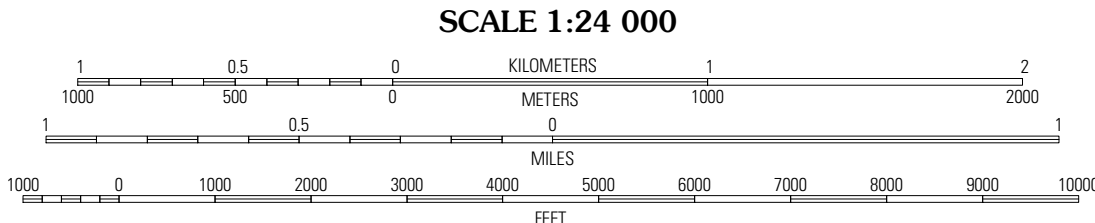


Produced by the United States Geological Survey
North American Datum of 1983 (NAD83)
World Geodetic System of 1984 (WGS84). Projection and
1 000-meter grid: Universal Transverse Mercator, Zone 14S
10 000-foot ticks: Kansas Coordinate System of 1983
(south zone)

Imagery.....NAIP, June 2008 - July 2008
Roads.....National Transportation Dataset, 2006 - 2008
Names.....GNIS, 2008
Hydrography.....National Hydrography Dataset, 2008
Contours.....National Elevation Dataset, 2006

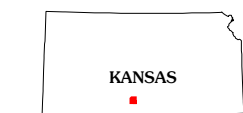


U.S. National Grid
100,000-m Square ID
NG
Grid Zone Designation
14S



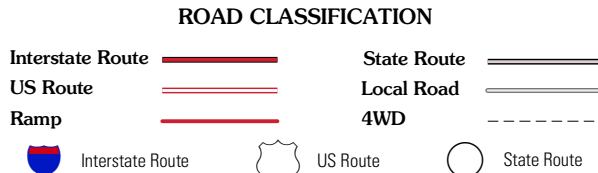
CONTOUR INTERVAL 20 FEET

This map was produced to conform with version 0.5.10 of the
draft USGS Standards for 7.5-Minute Quadrangle Maps.
A metadata file associated with this product is also draft version 0.5.10



Coats	Pratt SW	Pratt SE
Sun City NE	Sawyer	Isabel
Lake City	Medicine Lodge SW	Medicine Lodge

ADJOINING 7.5 QUADRANGLES



SAWYER, KS
2009