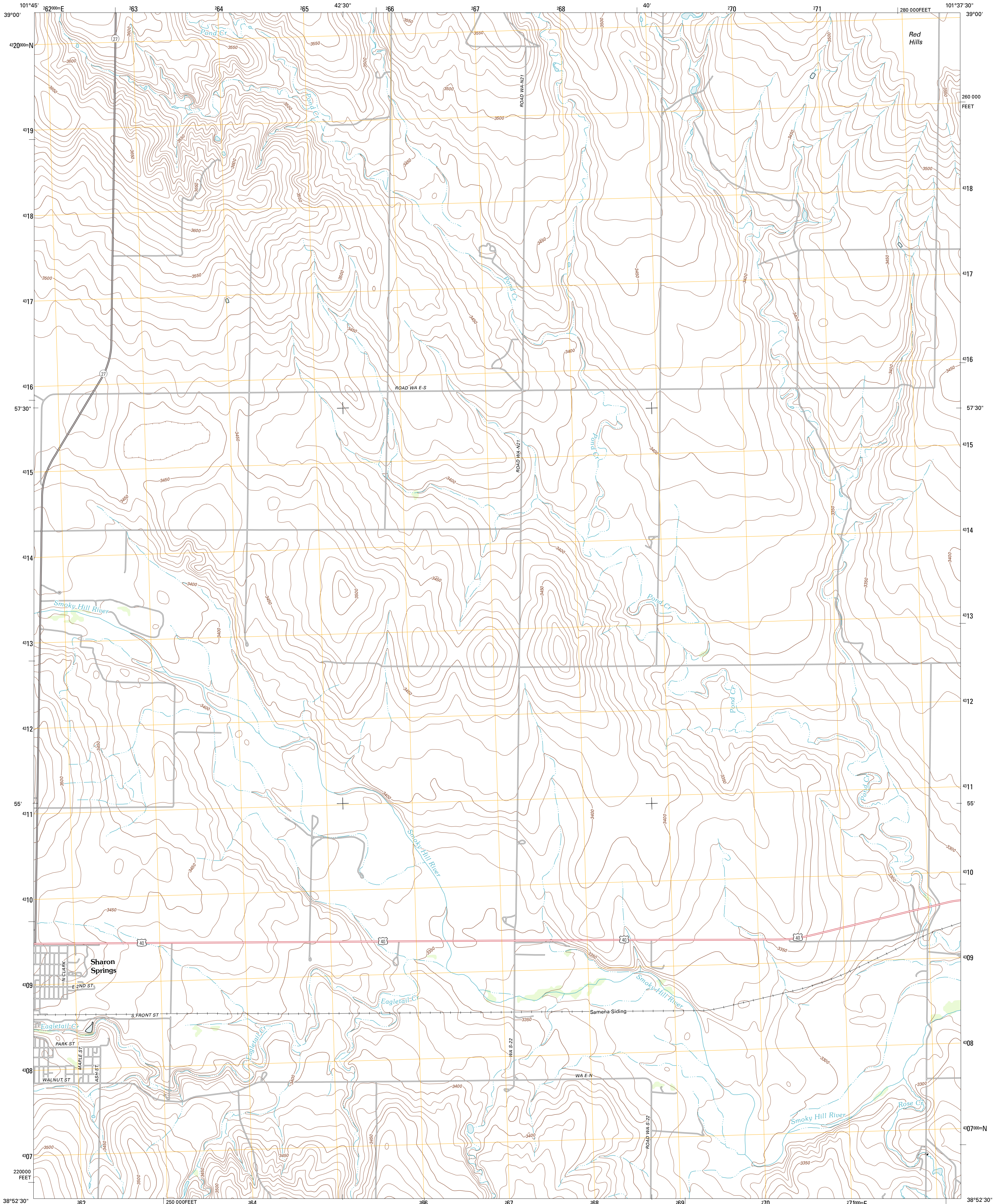




U.S. DEPARTMENT OF THE INTERIOR  
U. S. GEOLOGICAL SURVEY

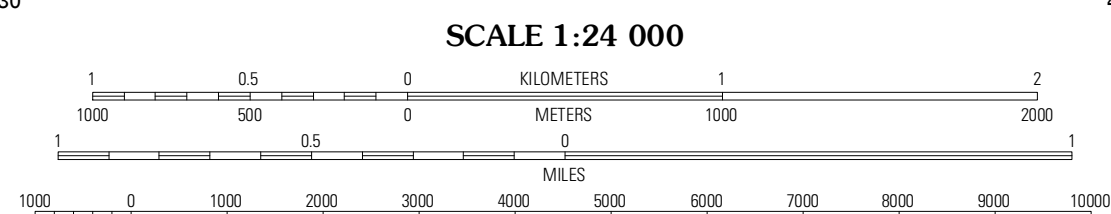
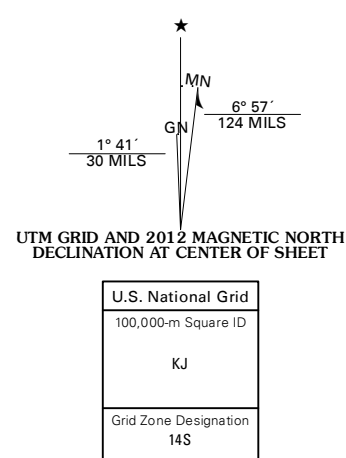


SHARON SPRINGS EAST QUADRANGLE  
KANSAS-WALLACE CO.  
7.5-MINUTE SERIES

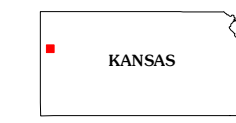


Produced by the United States Geological Survey  
North American Datum of 1983 (NAD83)  
World Geodetic System of 1984 (WGS84). Projection and  
1 000-meter grid: Universal Transverse Mercator, Zone 14S  
10 000-foot ticks: Kansas Coordinate System of 1983 (north  
zone)

Imagery.....NAP, July 2010  
Roads.....©2006-2011 TomTom  
Names.....GNIS, 2012  
Hydrography.....National Hydrography Dataset, 2010  
Contours.....National Elevation Dataset, 2012  
Boundaries.....Census, IBWC, IBC, USGS, 1972 - 2012



CONTOUR INTERVAL 10 FEET  
NORTH AMERICAN VERTICAL DATUM OF 1988  
This map was produced to conform with the  
National Geospatial Program US Topo Product Standard, 2011.  
A metadata file associated with this product is draft version 0.6.4



**ROAD CLASSIFICATION**  
Interstate Route State Route   
US Route Local Road   
Ramp 4WD   
Interstate Route US Route State Route

QUADRANGLE LOCATION

Horseshoe Draw SE	Harris Draw West	Harris Draw East
Sharon Springs West	Sharon Springs East	Wallace
Spring Valley Ranch	South Flats	Harrison Flats

ADJOINING 7.5' QUADRANGLES

SHARON SPRINGS EAST, KS  
2012