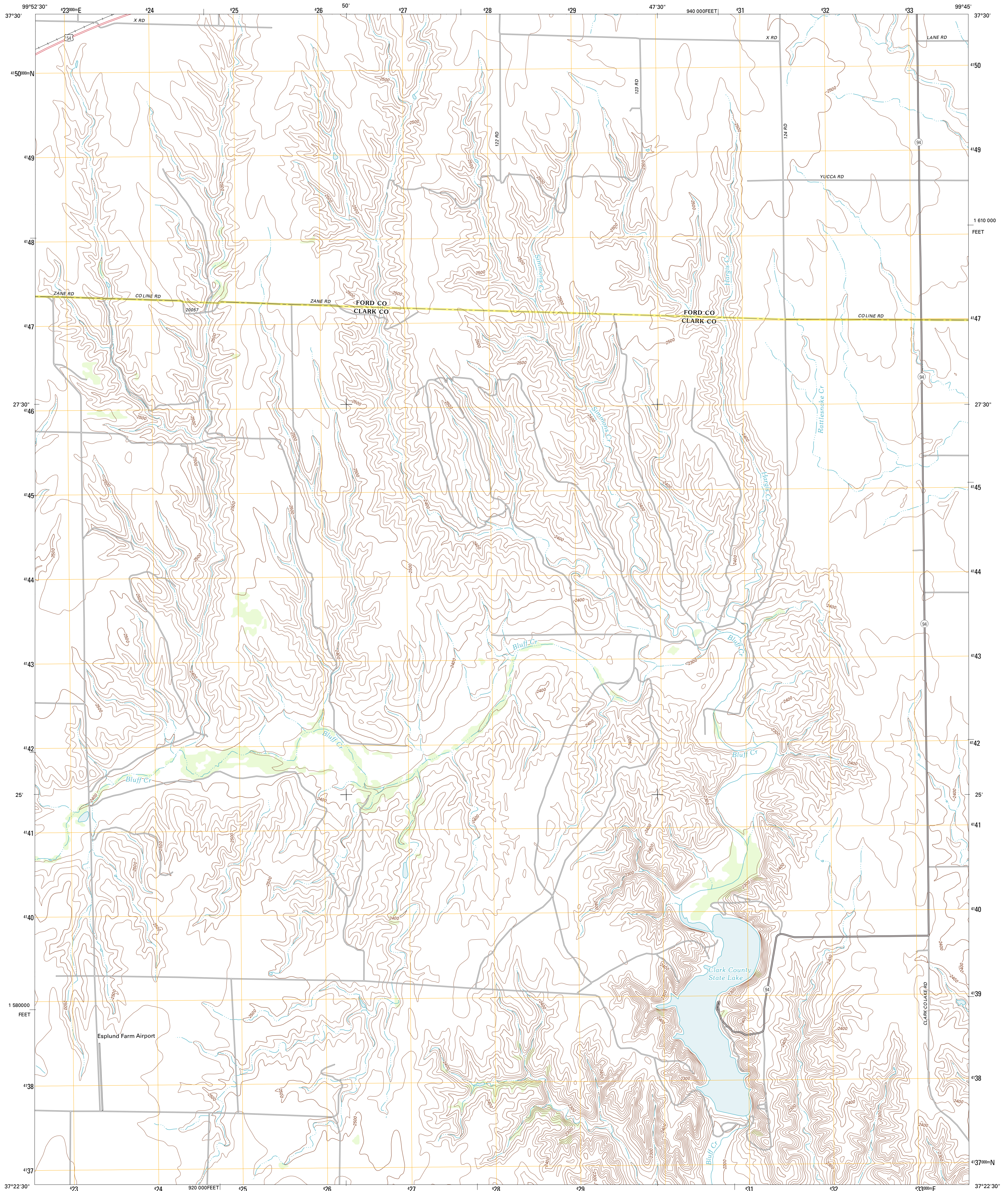




U.S. DEPARTMENT OF THE INTERIOR
U. S. GEOLOGICAL SURVEY



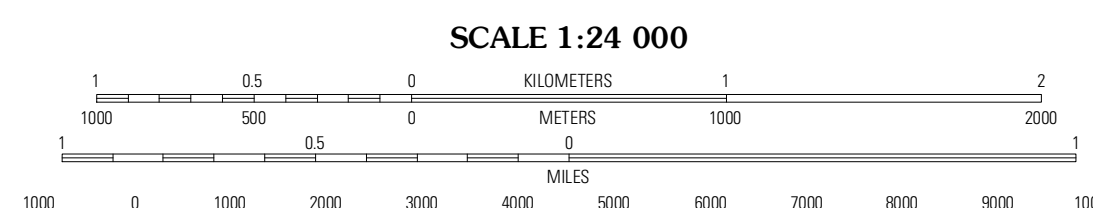
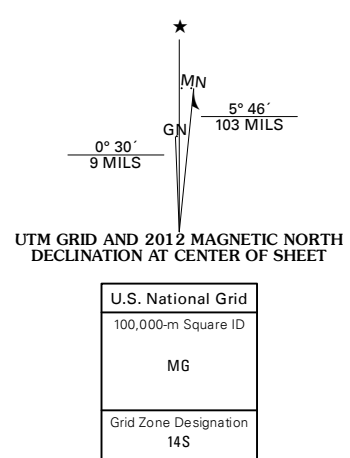
SIMMONS CREEK QUADRANGLE
KANSAS
7.5-MINUTE SERIES



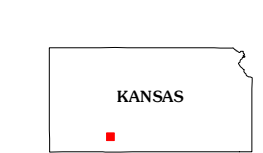
1 610 000
FEET

1 580 000
FEET

Produced by the United States Geological Survey
North American Datum of 1983 (NAD83)
Roads.....©2006-2011 TomTom
Names.....GNIS, 2012
Hydrography.....National Hydrography Dataset, 2010
Contours.....National Elevation Dataset, 2006
Boundaries.....Census, IBWC, IBC, USGS, 1972 - 2012

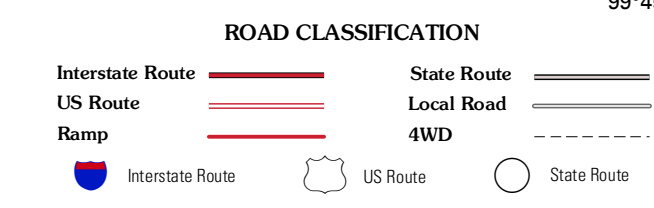


SCALE 1:24 000
CONTOUR INTERVAL 20 FEET
NORTH AMERICAN VERTICAL DATUM OF 1988
This map was produced to conform with the National Geospatial Program US Topo Product Standard, 2011. A metadata file associated with this product is draft version 0.6.4



QUADRANGLE LOCATION

Fort Dodge SW	Kingsdown	Bucklin
Bloom	Simmons Creek	Mount Jesus NW
Bloom SW	Bloom SE	Mount Jesus



SIMMONS CREEK, KS
2012

ADJOINING 7.5 QUADRANGLES