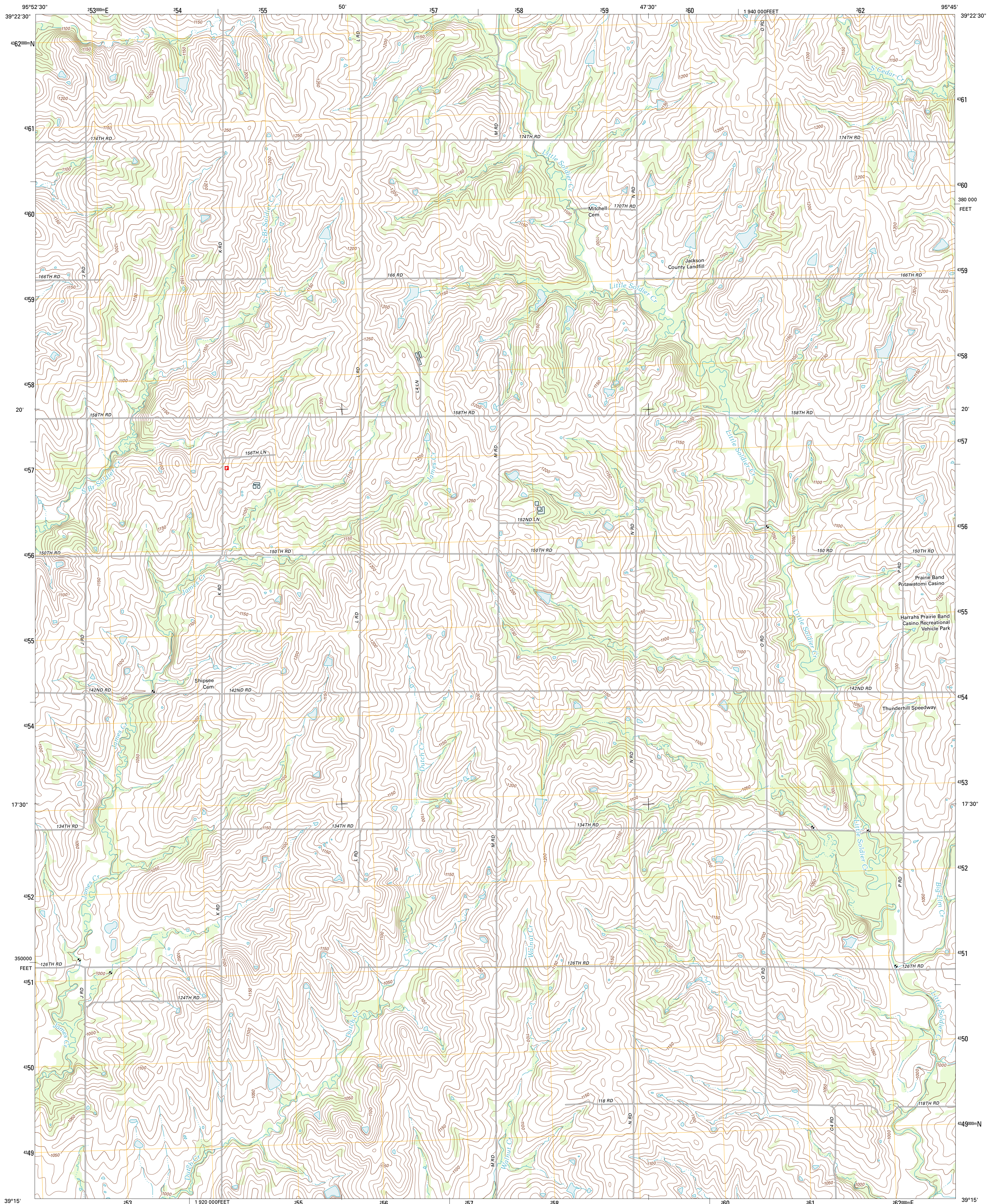




U.S. DEPARTMENT OF THE INTERIOR
U. S. GEOLOGICAL SURVEY

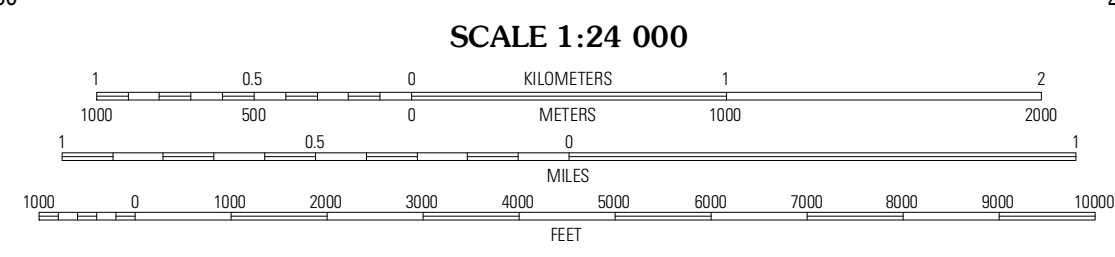
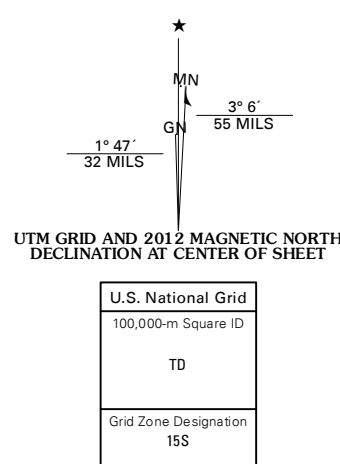


SOLDIER CREEK SE QUADRANGLE
KANSAS-JACKSON CO.
7.5-MINUTE SERIES



Produced by the United States Geological Survey
North American Datum of 1983 (NAD83)
World Geodetic System of 1984 (WGS84). Projection and
1 000-meter grid: Universal Transverse Mercator, Zone 15S
10 000-foot ticks: Kansas Coordinate System of 1983 (north
zone)

Imagery:.....NAIP, June 2010
Roads:.....©2006-2011, TomTom
Names:.....©2006-2011, TomTom
Hydrography:.....National Hydrography Dataset, 2012
Contours:.....National Elevation Dataset, 2006
Boundaries:.....Census, IBWC, IBC, USGS, 1972 - 2012



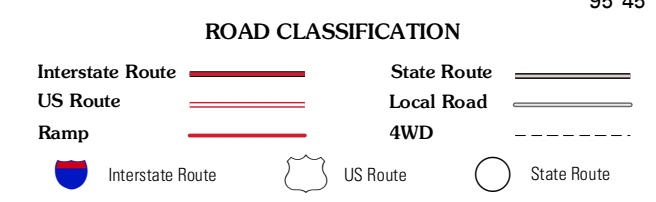
CONTOUR INTERVAL 10 FEET
NORTH AMERICAN VERTICAL DATUM OF 1988
This map was produced to conform with the
National Geospatial Program US Topo Product Standard, 2011.
A metadata file associated with this product is draft version 0.6.4



QUADRANGLE LOCATION

Soldier Creek NW	Soldier Creek NE	Holton
Soldier Creek SW	Soldier Creek SE	Maryetta
Rossville	Grove	Elmont

ADJOINING 7.5' QUADRANGLES



SOLDIER CREEK SE, KS
2012