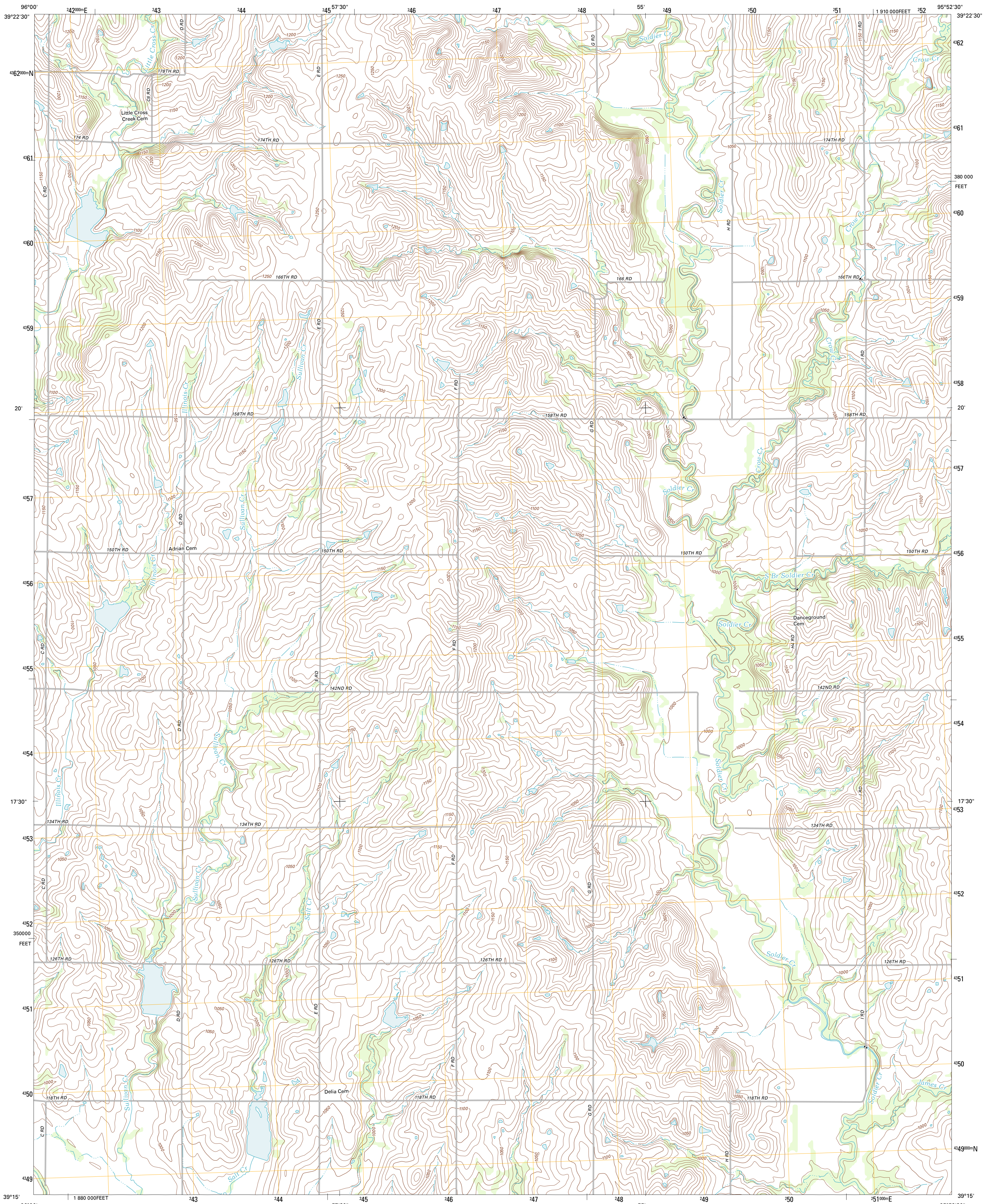




U.S. DEPARTMENT OF THE INTERIOR  
U. S. GEOLOGICAL SURVEY

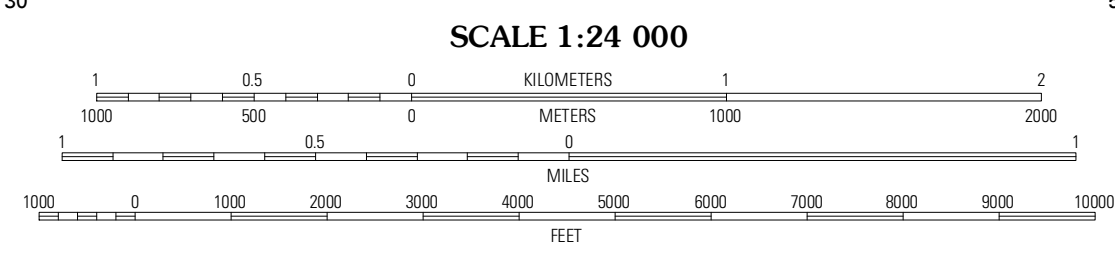
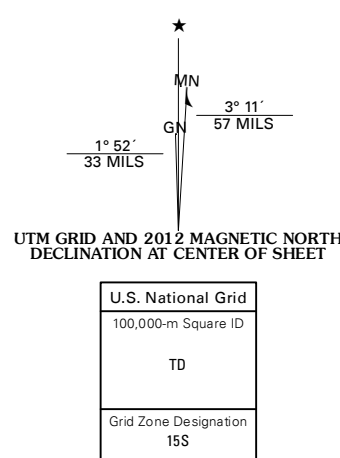


SOLDIER CREEK SW QUADRANGLE  
KANSAS-JACKSON CO.  
7.5-MINUTE SERIES

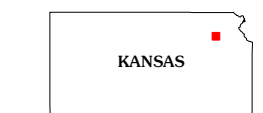


Produced by the United States Geological Survey  
North American Datum of 1983 (NAD83)  
World Geodetic System of 1984 (WGS84). Projection and  
1 000-meter grid: Universal Transverse Mercator, Zone 15S  
10 000-foot ticks: Kansas Coordinate System of 1983 (north  
zone)

Imagery:.....NAIP, June 2010  
Roads:.....©2006-2011, TomTom  
Names:.....©2006-2011, TomTom  
Hydrography:.....National Hydrography Dataset, 2012  
Contours:.....National Elevation Dataset, 2004  
Boundaries:.....Census, IBWC, IBC, USGS, 1972 - 2012



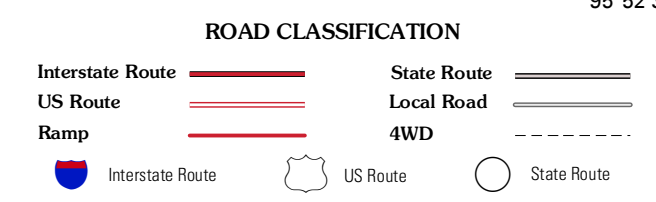
CONTOUR INTERVAL 10 FEET  
NORTH AMERICAN VERTICAL DATUM OF 1988  
This map was produced to conform with the  
National Geospatial Program US Topo Product Standard, 2011.  
A metadata file associated with this product is draft version 0.6.4



QUADRANGLE LOCATION

Osage NE	Soldier Creek NW	Soldier Creek NE
Emmett	<b>Soldier Creek SW</b>	Soldier Creek SE
Saint Marys	Rossville	Grove

ADJOINING 7.5' QUADRANGLES



SOLDIER CREEK SW, KS  
2012