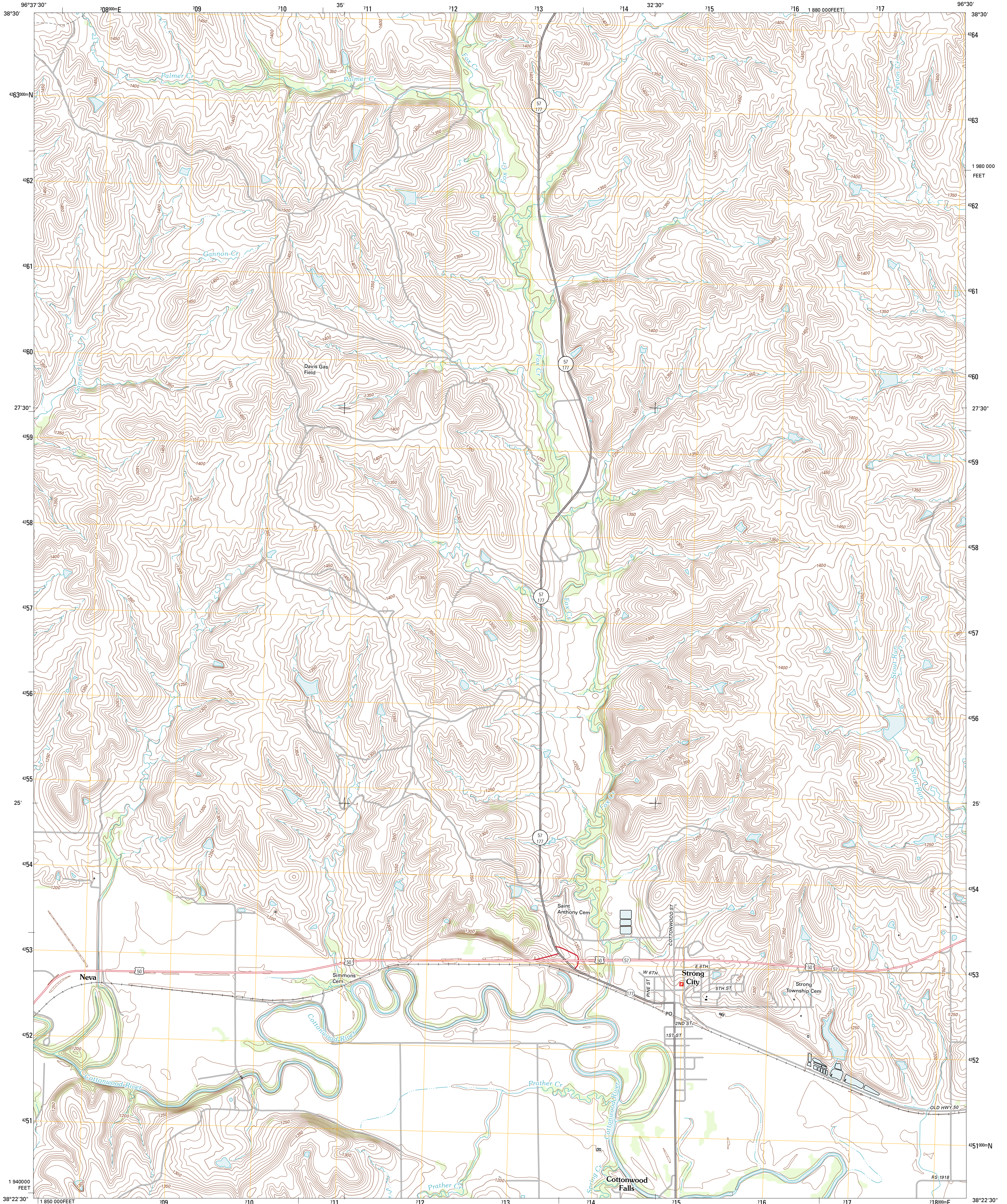




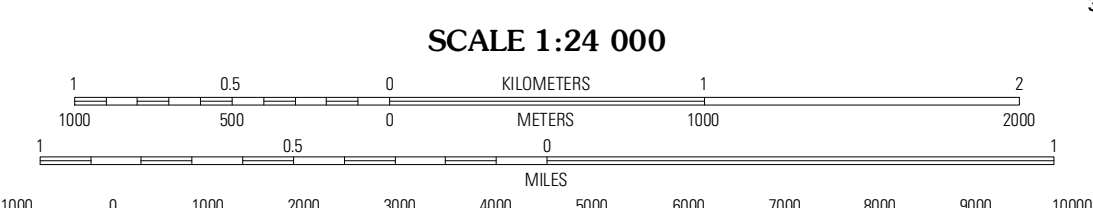
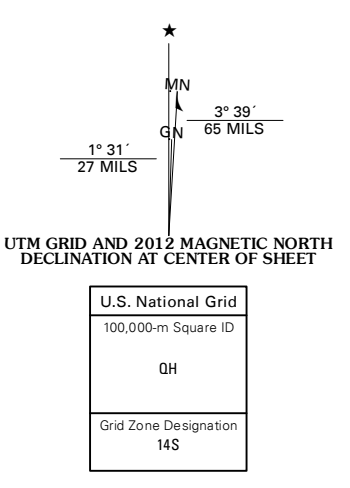
U.S. DEPARTMENT OF THE INTERIOR  
U. S. GEOLOGICAL SURVEY



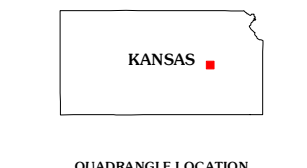
**STRONG CITY QUADRANGLE**  
KANSAS-CHASE CO.  
7.5-MINUTE SERIES



Produced by the United States Geological Survey  
North American Datum of 1983 (NAD83)  
World Geodetic System of 1984 (WGS84) Projection and  
1 000-meter grid: Universal Transverse Mercator, Zone 14S  
10 000-foot ticks: Kansas Coordinate System of 1983 (south zone)



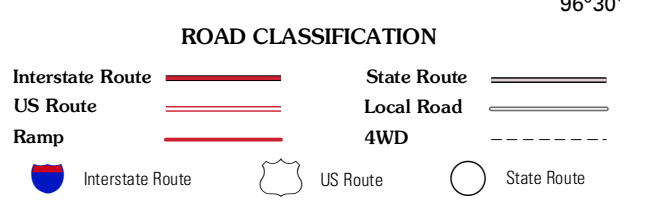
CONTOUR INTERVAL 10 FEET  
NORTH AMERICAN VERTICAL DATUM OF 1988  
This map was produced to conform with the National Geospatial Program US Topo Product Standard, 2011. A metadata file associated with this product is draft version 0.6.4



QUADRANGLE LOCATION

Diamond Springs	Wilsey	Lake Kahola
Hymar	<b>Strong City</b>	Saffordville
Elmdale	Cottonwood Falls	Gladstone

ADJOINING 7.5 QUADRANGLES



**STRONG CITY, KS**  
2012