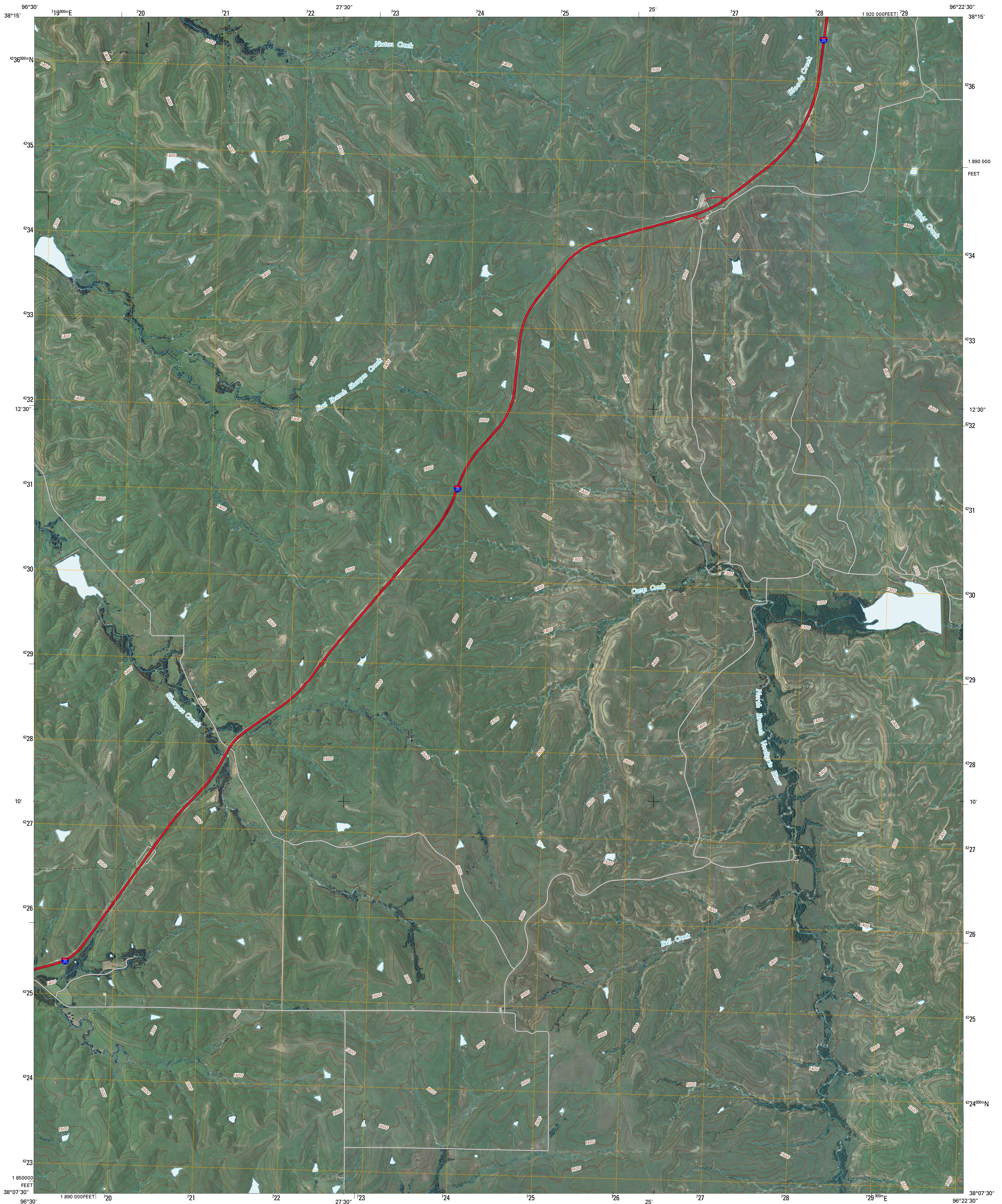




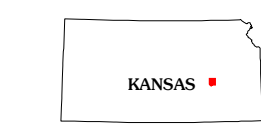
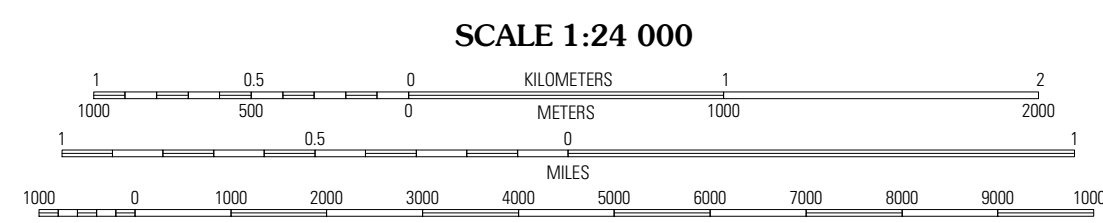
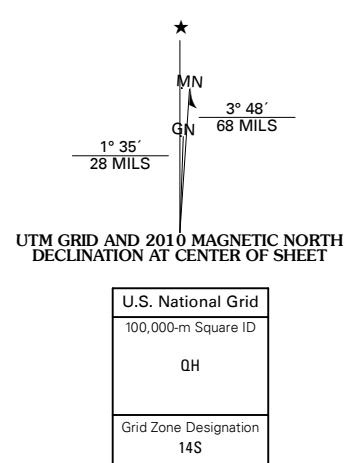
U.S. DEPARTMENT OF THE INTERIOR
U. S. GEOLOGICAL SURVEY



THRALL NW QUADRANGLE
KANSAS
7.5-MINUTE SERIES



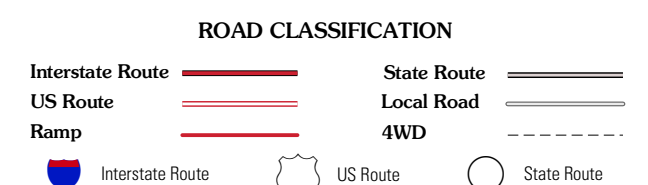
Produced by the United States Geological Survey
North American Datum of 1983 (NAD83)
World Geodetic System of 1984 (WGS84). Projection and
1 000-meter grid: Universal Transverse Mercator, Zone 14S
10 000-foot ticks: Kansas Coordinate System of 1983
(south zone)



QUADRANGLE LOCATION

Cottonwood Falls	Gladstone	Phenix Creek
Matfield Green	Thrall NW	Shaw Creek
Matfield Green SE	Teterville	Thrall

ADJOINING 7.5' QUADRANGLES



This map was produced to conform with version 0.5.10 of the
draft USGS Standards for 7.5-Minute Quadrangle Maps.
A metadata file associated with this product is also draft version 0.5.10

THRALL NW, KS
2010