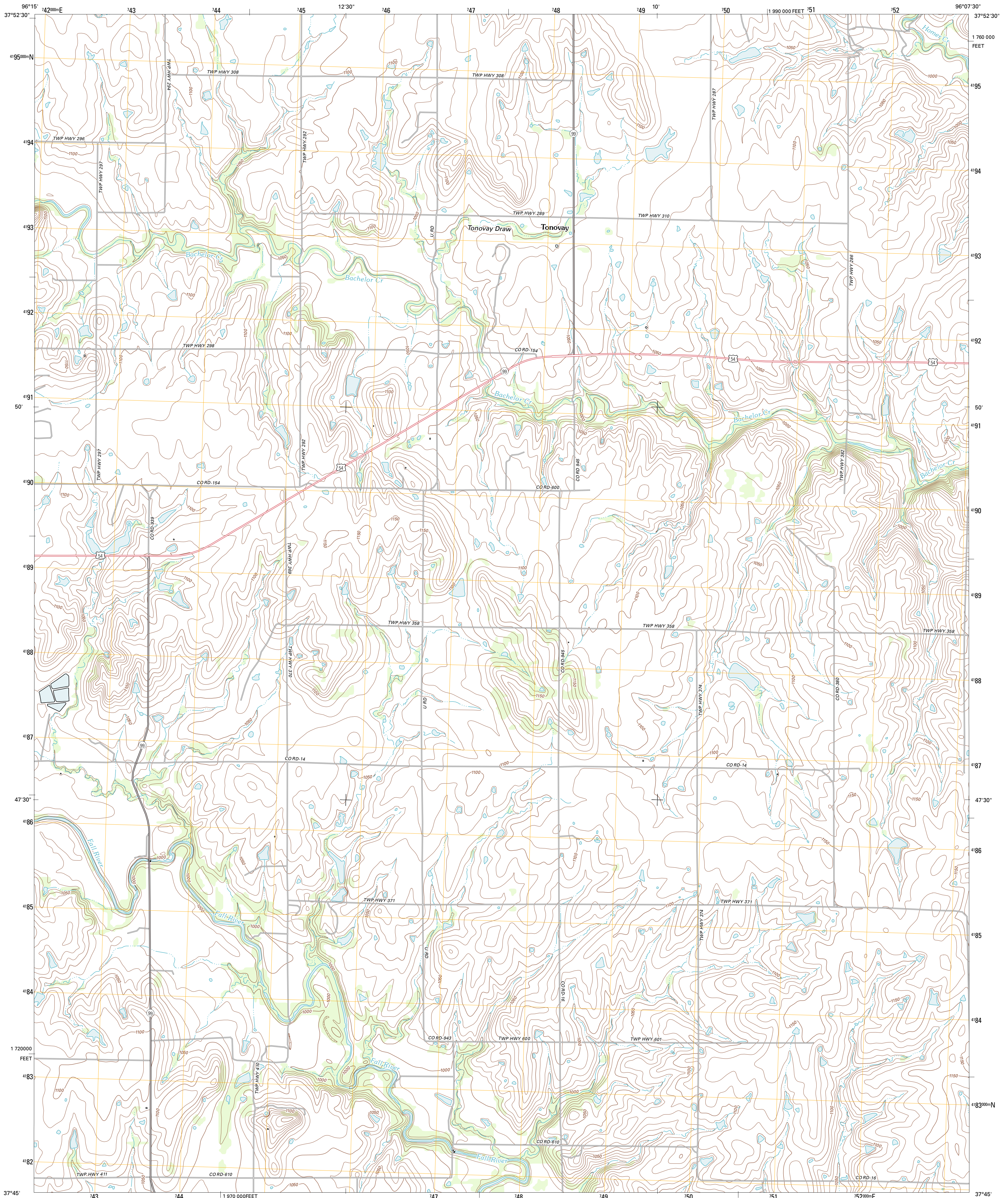




U.S. DEPARTMENT OF THE INTERIOR
U. S. GEOLOGICAL SURVEY

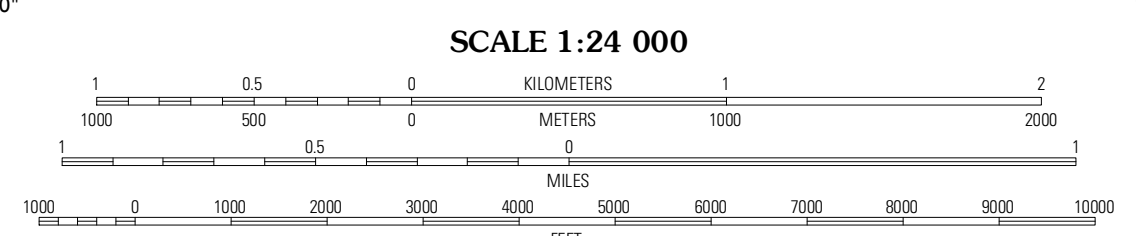
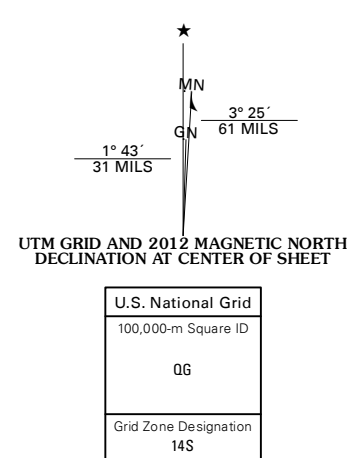


TONOVAY QUADRANGLE
KANSAS-GREENWOOD CO.
7.5-MINUTE SERIES



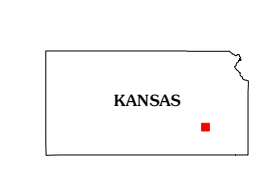
Produced by the United States Geological Survey
North American Datum of 1983 (NAD83)
World Geodetic System of 1984 (WGS84). Projection and
1 000 meter grid: Universal Transverse Mercator, Zone 14S
10 000-foot ticks: Kansas Coordinate System of 1983 (south
zone)

Imagery: N.A.P., June 2010
Roads: ©2006-2011 TomTom
Names: ©2006-2011 TomTom
Hydrography: National Hydrography Dataset, 2010
Contours: National Elevation Dataset, 2006
Boundaries: Census, IBWC, IBC, USGS, 1972 - 2012



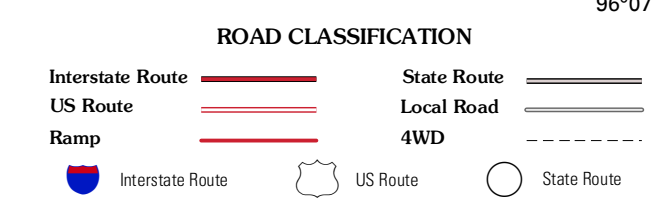
CONTOUR INTERVAL 10 FEET
NORTH AMERICAN VERTICAL DATUM OF 1988

This map was produced to conform with the
National Geospatial Program US Topo Product Standard, 2011.
A metadata file associated with this product is draft version 0.6.4



QUADRANGLE LOCATION

| | | |
|----------------|-----------------|-----------------------|
| Eureka NE | Hamilton | Virgil |
| Eureka NE | Tonovay | Neal |
| Piedmont NE | Severy North | Fall River Lake |



TONOVAY, KS
2012

ADJOINING 7.5' QUADRANGLES