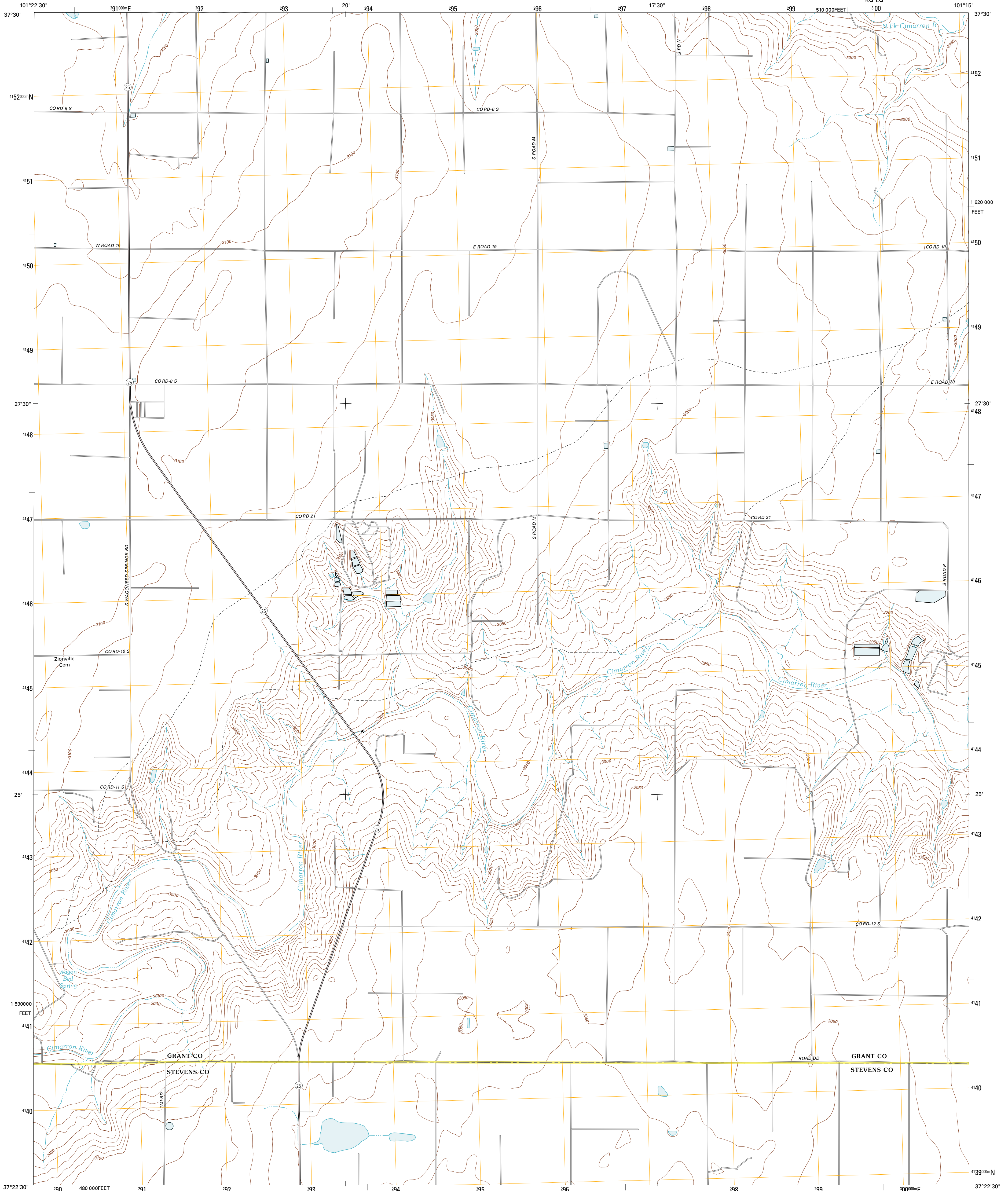




U.S. DEPARTMENT OF THE INTERIOR
U. S. GEOLOGICAL SURVEY

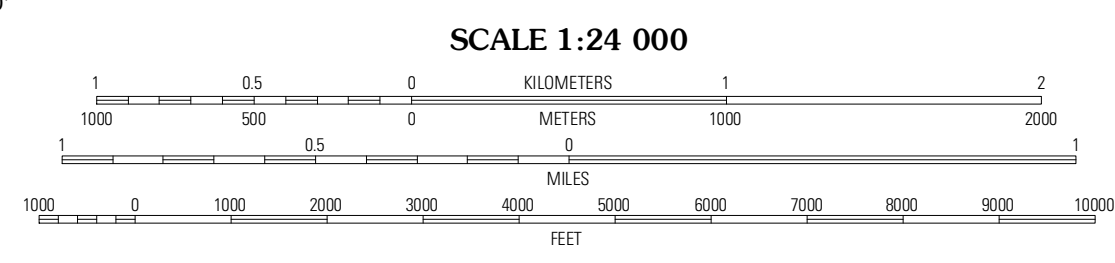
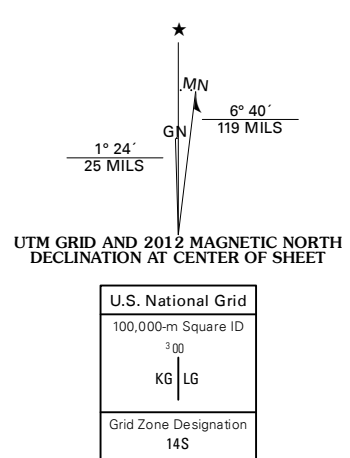


WAGON BED SPRING QUADRANGLE
KANSAS
7.5-MINUTE SERIES
KG LG

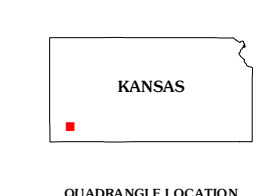


Produced by the United States Geological Survey
North American Datum of 1983 (NAD83)
World Geodetic System of 1984 (WGS84). Projection and
1 000-meter grid: Universal Transverse Mercator, Zone 14S
10 000-foot ticks: Kansas Coordinate System of 1983 (south
zone)

Imagery.....N.A.I.P., July 2010
Roads.....©2006-2011 TomTom
Names.....GNIS, 2012
Hydrography.....National Hydrography Dataset, 2010
Contours.....National Elevation Dataset, 2006
Boundaries.....Census, BWC, IBC, USCS, 1972 - 2012



CONTOUR INTERVAL 10 FEET
NORTH AMERICAN VERTICAL DATUM OF 1988
This map was produced to conform with the
National Geospatial Program US Topo Product Standard, 2011.
A metadata file associated with this product is draft version 0.6.4



ROAD CLASSIFICATION
Interstate Route
US Route
Ramp
State Route
Local Road
4WD
State Route

QUADRANGLE LOCATION

Ulysses SW	Ulysses	Hickok
Wagon Bed Spring NW	Wagon Bed Spring	Moscow NW
Wagon Bed Spring SW	Wagon Bed Spring SE	Moscow

WAGON BED SPRING, KS
2012

ADJOINING 7.5 QUADRANGLES